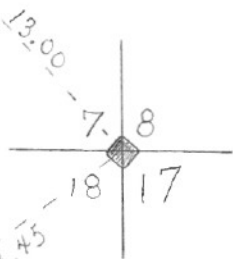


SECTION OR SUBDIVISION

7 | 8  
18 | 17

TWP..... 1 N....., RANGE..... 11..... E, W.M.

NAIL IN S.W.  
SIDE 18" PINENAIL IN N.W. SIDE  
28" FIR

W.O. REF.

7033 JSD

CORNER No.

518

CORNER DESCRIPTION

AT CORNER - SET  $\frac{3}{4}$ "  
x 3' PIPE.THIS COR. RE-ESTAB.  
BY PROPORTIONATE METHODS.See next card  
(2 of 2)

CARD

1

OF

2

SECTION OR SUBDIVISION

7/8  
18/17

CORNER No. 518

TWP. 12N, RANGE 11, W.M.

CORNER DESCRIPTION

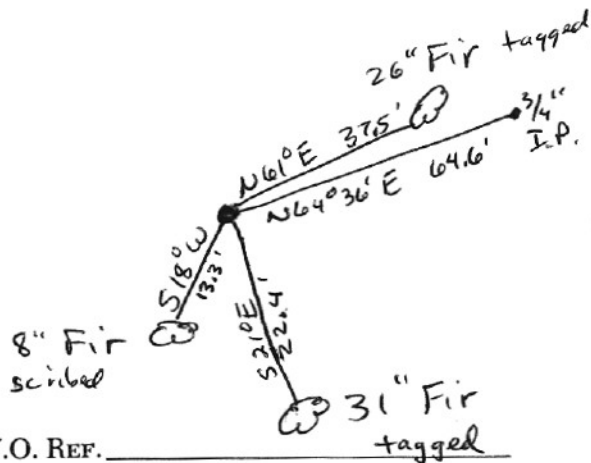
Corner set in 1984  
by Dan Newin LS#2007

Set 1/2" x 60" rebar with  
yellow plastic cap stamped  
"TD/CIC PLS 2007"

cor falls in rock  
slide.

DUER →

CARD 2 OF 2



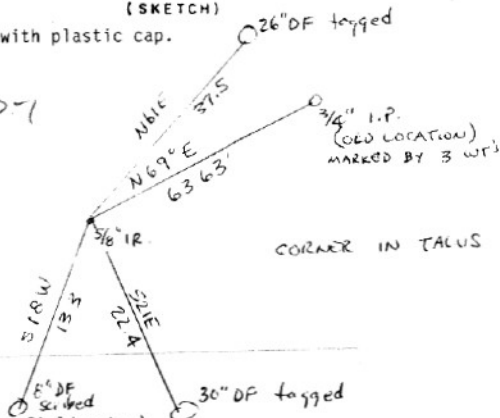
W.O. REF.

TYPE OF MONUMENT; TIES TO BEARING TREES, OBJECTS, etc.

(SKETCH)

Found 5/8" iron rod with plastic cap.

visited by  
Trantow  
1988



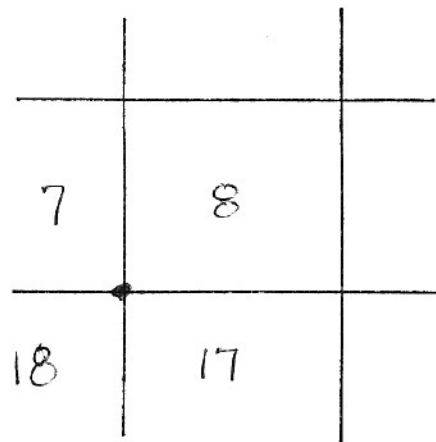
(Bk.2 Pg.3 of Trantow field notes)

CL0518

# LAND CORNER MONUMENT RECORD

LOCATION

|  |    |    |    |    |    |    |
|--|----|----|----|----|----|----|
|  |    |    |    |    |    |    |
|  | 6  | 5  | 4  | 3  | 2  | 1  |
|  | 7  | 8  | 9  | 10 | 11 | 12 |
|  | 18 | 17 | 16 | 15 | 14 | 13 |
|  | 19 | 20 | 21 | 22 | 23 | 24 |
|  | 30 | 29 | 28 | 27 | 26 | 25 |
|  | 31 | 32 | 33 | 34 | 35 | 36 |
|  |    |    |    |    |    |    |

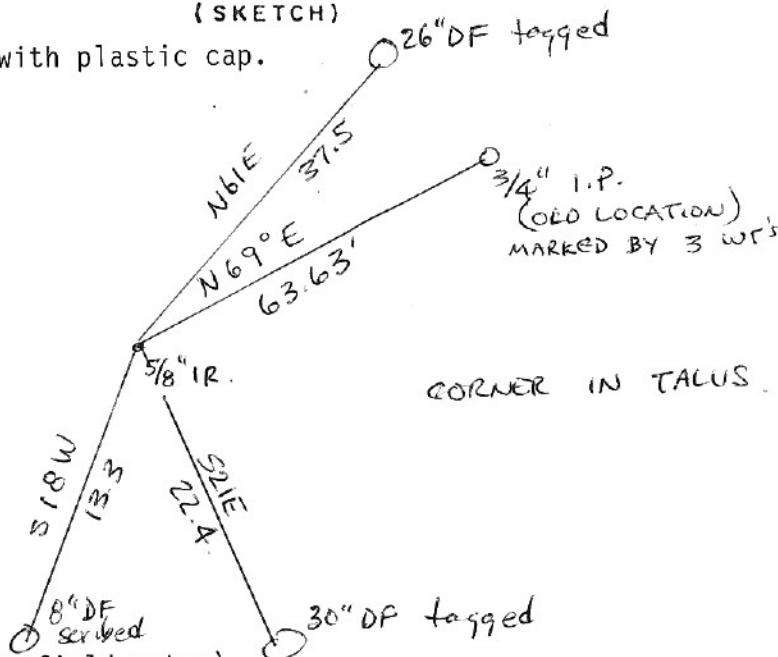


TOWNSHIP 1 North RANGE 11 East SECTION 8

TYPE OF MONUMENT; TIES TO BEARING TREES, OBJECTS, etc.

(SKETCH)

Found 5/8" iron rod with plastic cap.



(Bk.2 Pg.3 of Trantow field notes)

REMARKS: (History of corner, etc.)

Set c. 1958 by USFS; position later unaccepted. New position set in 1984 survey for Champion International. Position established by double proportion.

Found corner as described, this information for update.

REGISTERED  
PROFESSIONAL  
LAND SURVEYOR

*Terry N. Trantow*

OREGON  
DEC. 15, 1978  
TERRY N. TRANTOW  
1799

NAME *Terry N. Trantow*

TITLE LS 1799

DATE 2 February 1989