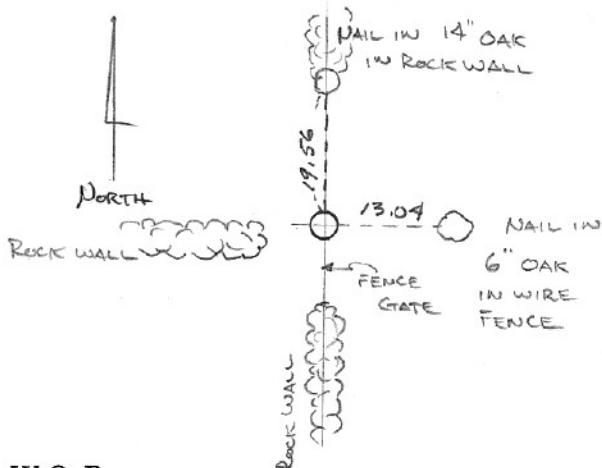


SECTION OR SUBDIVISION $\frac{1}{4}$ COR 4+3

CORNER No. 516

TWP. 2N, RANGE 10 E, W.M.

CORNER DESCRIPTION



$\frac{1}{4}$ SEC. COR. 4+3
REPLACED LEAD PLUG &
TACK WITH BRASS CAP IN
2" PIPE.
MARCH 1972

W.O. REF.

CARD 1 OF 1

Cor#516 $\frac{1}{4}$ cor 4/3 2N10E

JLH set pipe in 1903 from orig evidence. Newton fd a pipe in 1971 . HRC set 2" pipe and brass cap in 1972 in same location. Corner fits JLH distances in all directions reasonably well.