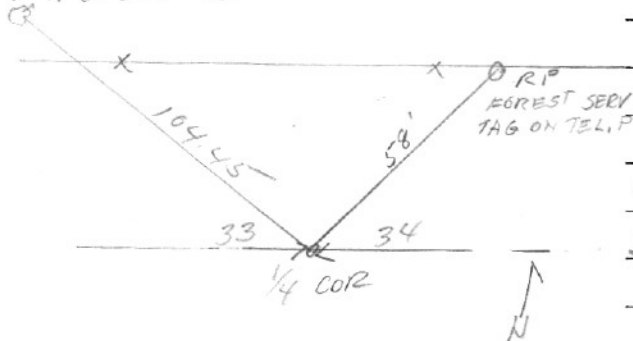


SECTION OR SUBDIVISION 33/34

CORNER No. 495

TWP. 3N, RANGE 10 E, W.M.

R.P. SCREW
IN 10" OAK
1" N OF STEEL FL



CORNER DESCRIPTION

1/4 COR 33/34

2" STEEL AXLE ON

2 OF PAVE

BRASS CAP IN
MONUMENT CASE

SET BY H.R.C.O.

W.O. REF. JENNISON #4175

KRUMBAH 11-13-70

CARD 1 OF 3

SECTION OR SUBDIVISION

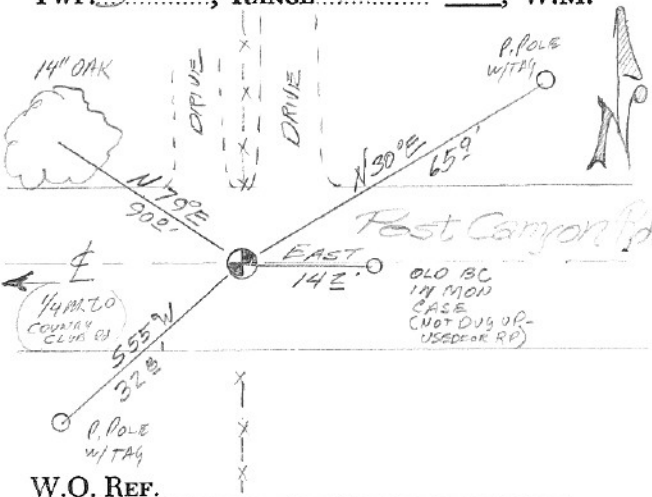
1/4 33/34

CORNER No.

495

TWP. 3N, RANGE 10, W.M.

CORNER DESCRIPTION



9-90

ED: STONE/IR (SEE BACK
of CARD) AS PER U.L.H.

SET 8 BC / Mon Box

NEW RP; LEFT

OLD BC AS RP &
POSSIBLE OLD CORNER

FIELD BOOK 1-90

CARD 3 OF 3

While going through the JLH books, notes were found pertaining to the Quarter Corner to Sections 33 & 34 of ~~2~~³N 10. References to various iron pipes and plow shares were checked and searched in the field. A gas pipe East of the corner was found; at a point 476' West of the gas pipe we dug 12" below the surface and found a large stone with a 3/8" iron rod driven alongside to be plus or minus 0.3', and on line with the Center of S.34, as called by J.L.H. A strong reading was found 600' East of the corner, where J.L.H. called a plow share, but not dug out; 330' West of the corner fell in a swale that has been filled and culverted -- no pipe found.

BACK - 8495
3 of 3

CC0495

SECTION OR SUBDIVISION 33-34

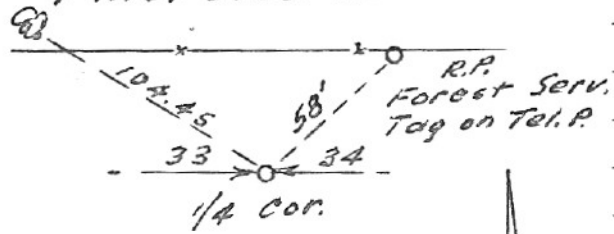
CORNER No. ~~776~~ 347

TWP. 3 N, RANGE 10 E, W.M.

CORNER DESCRIPTION

R.P. screw
in 10" OAK
1' N. of steel fc

2" Steel Axle
on E of Pave.



W.O. REF. 4175 Krumbach