

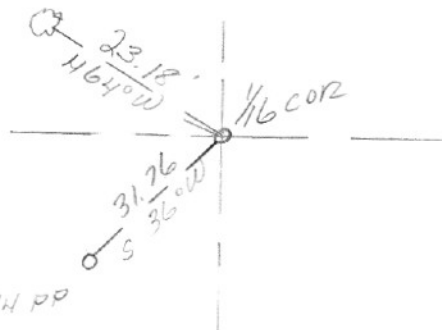
SECTION OR SUBDIVISION 33

CORNER No. 494

TWP. 31, RANGE 10 E, W.M.

CORNER DESCRIPTION

RIP NAIL
IN 4" OAK



SE COR OF SW 1/4 OF
SE 1/4

BOLT ON TOP 2" LP
6" UNDER & PAVE

REPLACED WITH BRASS CAP
IN MON CASE BY H.R.C.

12/21/70

W.O. REF. TENNESON # 4175

KELMBAH 11-13-70

CARD OF

CC0494

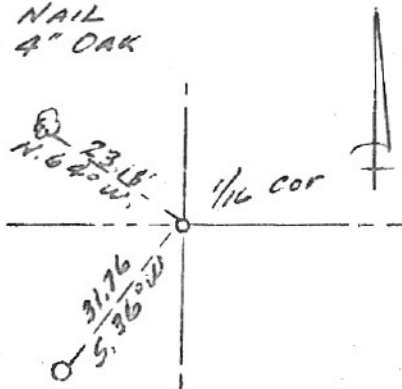
SECTION OR SUBDIVISION 33

CORNER No. 348

TWP. 3 N., RANGE 10 E., W.M.

CORNER DESCRIPTION

R.P. NAIL
IN 4" OAK



S.E. cor. of S.W. 1/4
of S.E. 1/4

Bolt on top 2" I.P.
6" under & Pave.

R.P.
NAIL IN P.P.

W.O. REF. 4175 Krumboltz

✓ 7700W CARD OF

CC0494

12/21/70

SET BRASS CAP IN
MONUMENT CASE

T3N
S $\frac{1}{16}$ $\frac{33}{4}$
N $\frac{1}{16}$ T2N

R10E

I.P. REMAINED IN PLACE
B.C. IS SET IN THE PIPE

WC Brown

SECTION OR SUBDIVISION

~~W~~ $\frac{1}{16}$ $\frac{34}{4}$

CORNER No.

504

TWP. $\frac{3N}{2N}$, RANGE 10, E, W.M.

CORNER DESCRIPTION

1" I.P. REPLACED
WITH BRASS CAP
SET IN MONUMENT
CASE BY H.R. CO.
12/21/70

W.O. REF.

CARD

OF

CC0504
12/21/70

SET BRASS CAP IN
MONUMENT CASE

T3N

$W \frac{1}{16}$ $\frac{34}{3}$

T2N R10E

B.C. REPLACES 1" I.P.

W. C. Brown