

SECTION OR SUBDIVISION

16, 15
21/22

CORNER No.

476

TWP. 2N, RANGE 10 E, W.M.

CORNER DESCRIPTION

28" DFIR
IN NE QUAD.

2" IP

2" IP 12" ABOVE
GROUND - LEAD CAP/TACK
IN CENTER, FOUND 2-17-70
A. HUTSON: GO TO LITTLE
PEAR ORCHARD ON EAST SIDE
ROAD - SOUTH OF TUCKER PARK
THENCE WEST 100' FROM
HWY, 1 BT LOOKS LIKE
ORIGINAL.

W.O. REF.

O U E R →

CARD

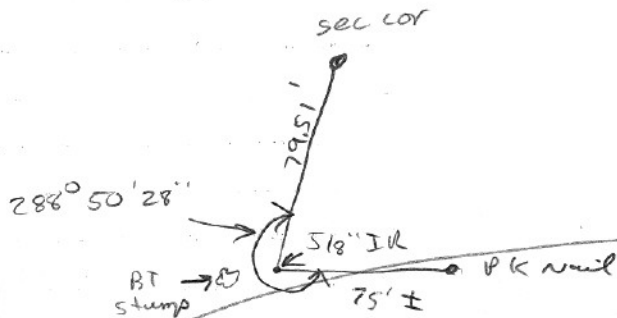
1

OF

2

O.A. 12, 1988

cor. to be
destroyed by
pipeline project



HWY 281

See Field bk # 2-88

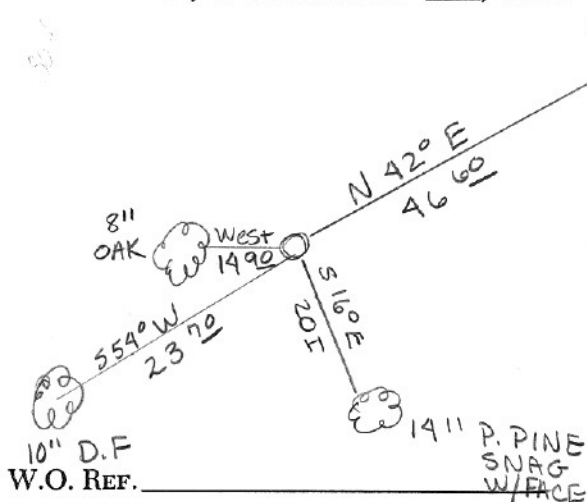
SECTION OR SUBDIVISION

16/15
21/22

CORNER No. 476

TWP. 2N, RANGE 10 E, W.M.

CORNER DESCRIPTION



12" D.F. 1 1/2" I.P. WITH BRASS
CAP 10" ABOVE GROUND.
REMON. 6-13-94.
5' STUMP ON WEST SIDE
OF ROAD - SOUTH OF TUCKER
PARK. THENCE NORTH
APPROX 80' FROM HWY.

CARD 2 OF 2

