

SECTION OR SUBDIVISION

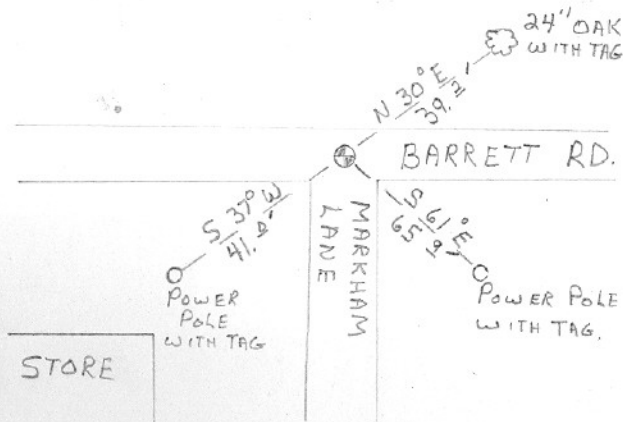
4	3
9	10

CORNER No. 457

TWP. 2N, RANGE 10 E, W.M.

CORNER DESCRIPTION

FOUND BRASS CAP
FLUSH WITH PAVEMENT.
TAGGED 1-3-73 HRCO.



W.O. REF.

CARD 1 OF 1

Cor# 457 Sec Cor 3,4,9,10 2N10E

No GLO evidence, but corner has been in same location since early 1900's