

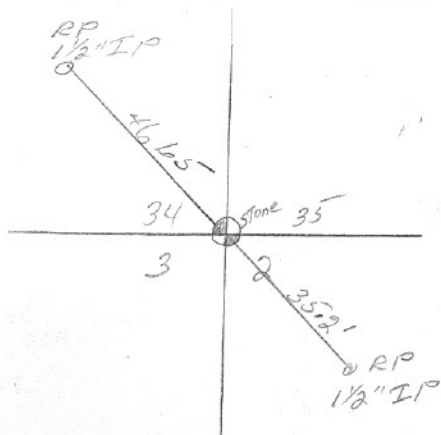
SECTION OR SUBDIVISION

$\frac{34 \times 35}{312}$

CORNER No. 427

TWP. $\frac{3}{2}$ N., RANGE 10 E, W.M.

CORNER DESCRIPTION



NE COR SEC 3

STONE & RR spike

REPLACED WITH BRASS CAP

IN MON CASE BY H.R.C.

12/21/70

W.O. REF. TENNESON (22) # 2595

Y - 740, 510, 75

X - 1, 733, 466 80

CARD OF

1065
3701
MEH

Cor#427 sec cor 34,35,2,3 3N/2N 10E

Hrc fd stone & rr spike in 1970, & remonumented with cap in mon case. Stone was probably goit's, set from orig evidence.