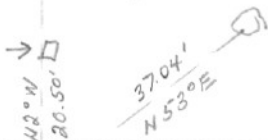


SECTION OR SUBDIVISION 3/10CORNER No. 421TWP. 2N, RANGE 10 E, W.M.

CORNER DESCRIPTION

RP SW COR
IRRIG. BOX
14"X14" 5' ABOVE
GRD.

R.P. SPIKE IN
8" PINE

1/6 3/10NE Cor NW 1/4 NE 1/4 Sec 10FD AXLE

↑
N

1/6 Cor
FD AXLE & ROCKFORD RD
PAVED

RP
FORM NAIL
IN 12" OAK

FORM NAIL IN

16" OAK

W.O. REF. Tennessee (119) # 3570 HAS Co. Loc. TAG

4030Y - 735, 296.67X - 1,732, 003.30

CARD..... OF