

SECTION 11

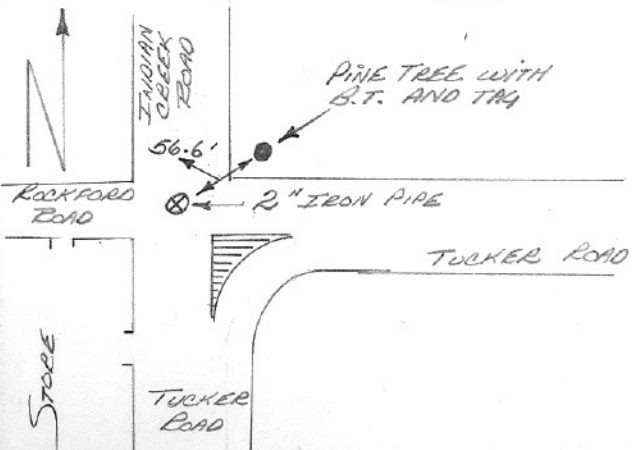
SECTION OR SUBDIVISION

SEC. COR. $\frac{3}{10} | \frac{2}{11}$

CORNER No. 420-A

TWP. 2N....., RANGE 10E....., W.M.

CORNER DESCRIPTION



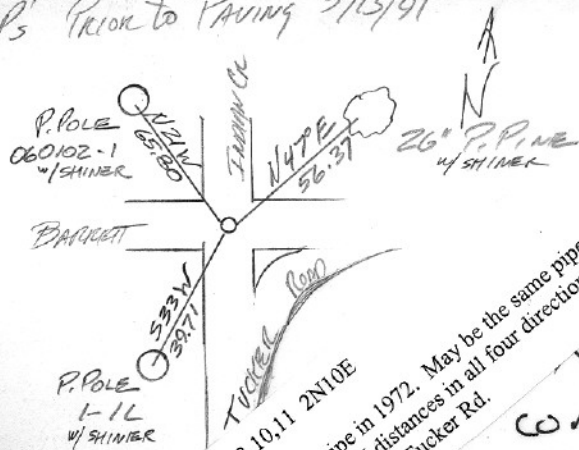
N.W. SECTION CORNER
 COMMENS TO $\frac{3}{10} | \frac{2}{11}$ 2N10E
 FD. 2" IRON PIPE
 MAY '72

REPLACED WITH
 BRASS CAP IN MON.
 CASE BY H. R. G. W
 5/13/91 FD: PAVEMENT FILLED
 HOLE w/ STRADDLES PRIOR
 to PAVING
 (OVER)

W.O. REF. _____

CARD OF

RP's Prior to PAVING 5/13/91



Cor 420a sec cor 2,3,10,11 2N10E
HRC monumented a 1 1/2" pipe in 1972. May be the same pipe JLH set in 1910 from
orig evidence. Corner fits JLH distances in all four directions. ODOT monumented the
HRC corner in 1999 after paving Tucker Rd.

Note: This
corner monumented
by ODOT in 1999.
New MON case &
cap. Same location.