

SECTION OR SUBDIVISION

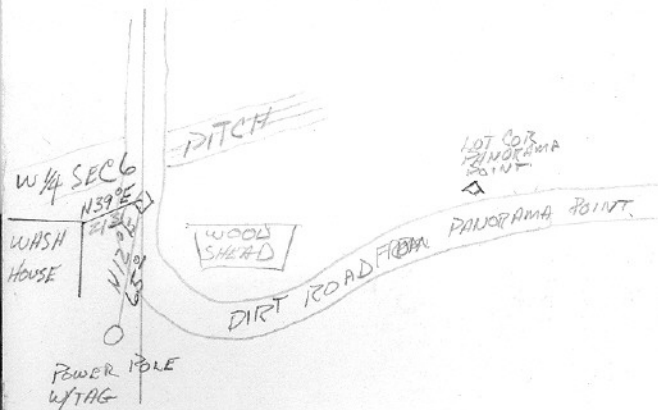
W 1/4 6 E 2ND COR SEC 1 2N10E

CORNER No.

417

TWP... 2 N., RANGE... 11... E, W.M.

CORNER DESCRIPTION




1 1/2" I.P. FOUND APRIL 69
THRU DIRT ROAD S. of
PR ROAD TO WEBSTER PLACE
POINT IS IN CENTER OF
ROAD AFTER IT TURNS N.
R/E
4/25/72 NEWTON SURVEY
CO. REPLACED FD. 3/4"
I.P. WITH BRASS CAP

W.O. REF. #1035-PG-72 N.S.Co.

BAIRN

CARD..... OF



Cor#417 ¼ Cor 1/6 2N 10/11E

Newton fd pipe in 1972 and set a brass cap in concrete. No GLO evidence, but corner seems to fit old surveys.