

# LAND CORNER MONUMENT RECORD

INDEX FILE No. A19 USDA-FOREST SERVICE

LOCATION

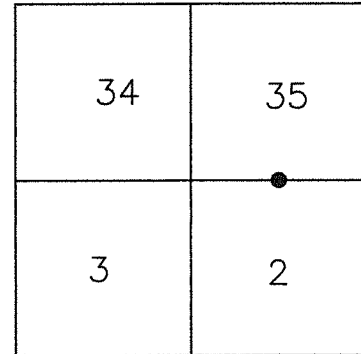
CC 396

HOOD RIVER COUNTY  
STATE OF OREGON  
WILLAMETTE MERIDIAN

R. 8 E.

T.  
2  
N.

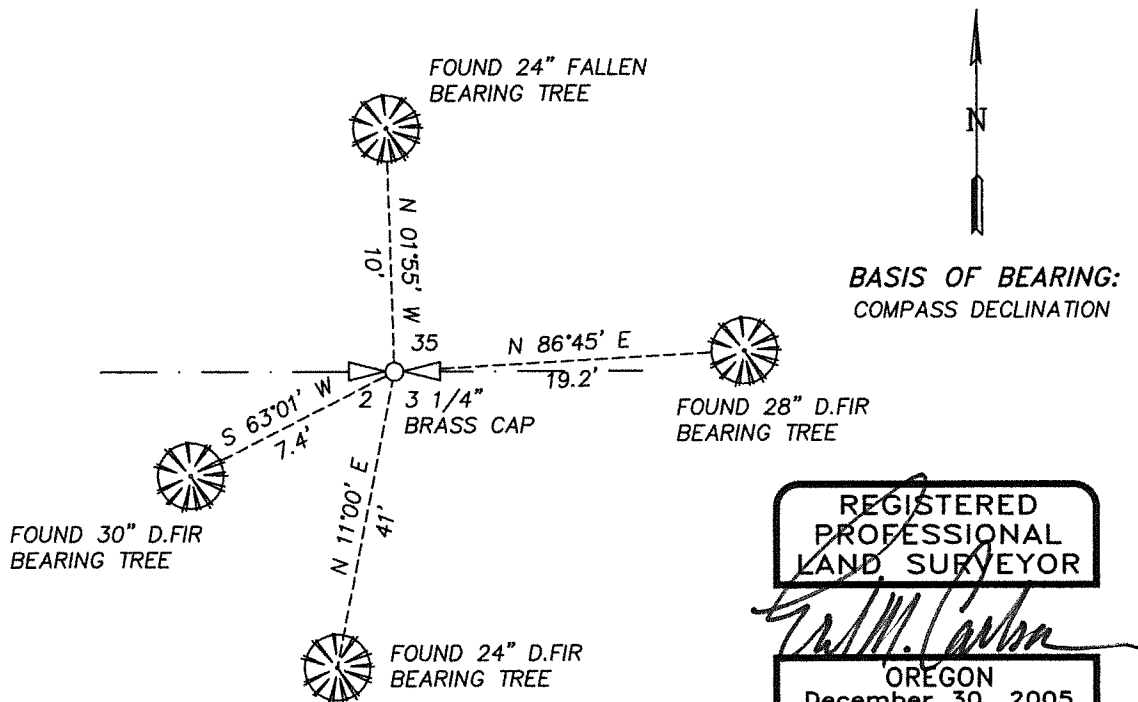
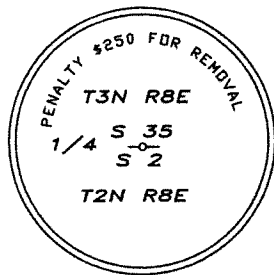
				●		
	6	5	4	3	2	1
	7	8	9	10	11	12
	18	17	16	15	14	13
	19	20	21	22	23	24
	30	29	28	27	26	25
	31	32	33	34	35	36



TOWNSHIP 2 NORTH      RANGE 8 EAST      SECTION 1/4 CORNER 2/35

TYPE OF MONUMENT; TIES TO BEARING TREES, OBJECTS, etc.

(SKETCH)



BASIS OF BEARING:  
COMPASS DECLINATION

REGISTERED  
PROFESSIONAL  
LAND SURVEYOR

*Erik M. Carlson*

OREGON  
December 30, 2005  
ERIK M. CARLSON  
72306

Expires: December 31, 2023

Found 3 1/4" brass cap monumenting the Quarter corner (A-19) common to Section 35 and Section 2 of Township 2 North, Range 8 East.

- Existing references:
- 28" D.fir with tags bears North 86°45' East, a distance of 19.2 feet. set washer.
  - 30" D.fir with tags bears South 63°01' West, a distance of 7.4 feet. set washer.
  - 24" fallen tree with tag (obliterated) bears North 01°55' West a distance of 10 feet.
  - 24" D.fir with tag bears South 11' West a distance of 41 feet.

REMARKS: ( History of Corner, etc. )

- 8/1935 - U.S.C.E. SET 3-1/4" BRASS MONUMENT, BONNEVILLE LANDS PROJECT MAP 0-7-5 OHR
- 9/1976 - U.S.C.E. FOUND 3 1/4" BRASS MONUMENT, L.S.460, C.S.76056.

DIRECTIONS TO CORNER: FROM WYETH CAMPGROUND ENTRANCE HEAD WESTERLY ON WYETH ROAD APPROXIMATELY 0.8 MILES. PULLOFF ON THE NORTH SIDE OF THE ROAD. MONUMENT IS NORTHERLY INTO THE WOODS APPROXIMATELY 400 FEET.

NAME: ERIK M. CARLSON

DATE: JULY 20, 2022

TITLE: TERRA SURVEYING

REGISTRATION NO. OR PLS 72306

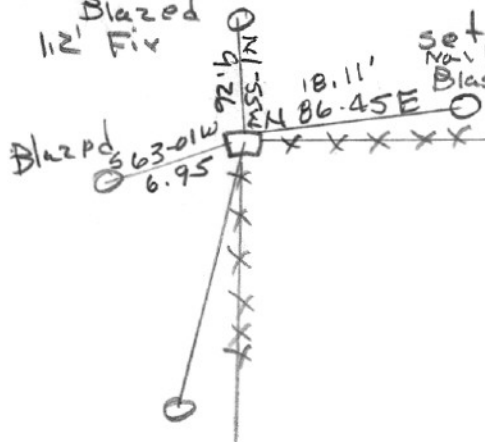
SECTION OR SUBDIVISION

$\frac{35}{2}$

TWP.  $\frac{34}{2N}$ , RANGE 8E, W.M.

Blazed  
12' Fir

set 30d  
Nail  
Blazed  
30" Fir



W.O. REF. \_\_\_\_\_

CORNER No. 396

CORNER DESCRIPTION

YA Cor fd by  
clair Pense 1976  
US Army Corps of  
Eng Brass cap  
in Conc.  
see survey file  
# 7656

CARD ..... OF .....