

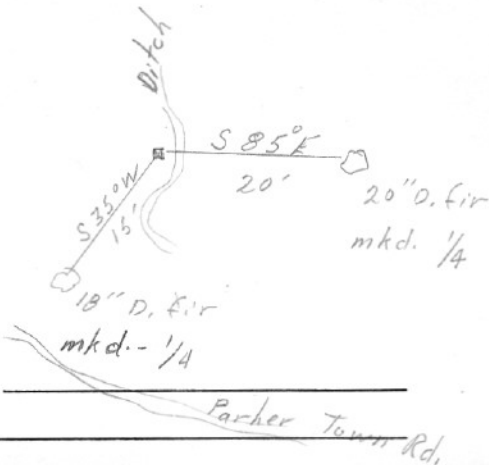
SECTION OR SUBDIVISION

R 9E 13 | 18 R 10E

CORNER No. 380

TWP. 2 N., RANGE 9., 10. E, W.M.

CORNER DESCRIPTION



1/4 Cor.
 3/4" pipe & stake 2x3x20"
 fd. by V.B.E Mar. 1946
 fd. by R.W. - 8/30/60
 Follow ditch in from
 Rinos Hill Rd. - Mkd.
 trees both sides ditch

W.O. REF.

CARD 1 OF 2

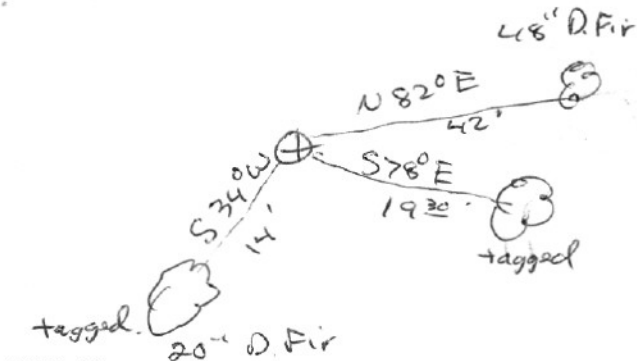
SECTION OR SUBDIVISION $\frac{1}{4}$ cor 13/18

CORNER No. 380

TWP. 2N., RANGE 9410, W.M.

CORNER DESCRIPTION

Fd $\frac{3}{4}$ " pipe & replaced
with $1\frac{1}{2}$ " pipe & brass
cap. Tagged both
trees shown on card
Log 2. Also found 48"
D. Fir as described in
JLH Bk. 20-T p. 31-32.
(1909)



W.O. REF. _____

CARD 2 OF 2