

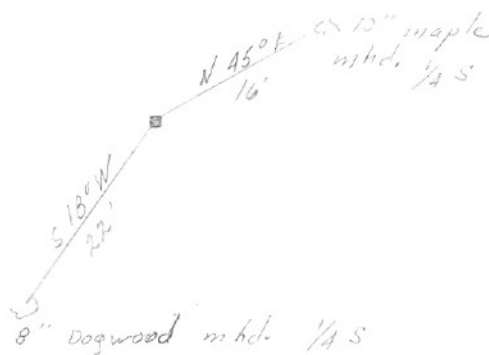
SECTION OR SUBDIVISION

11 | 12

CORNER No. 376

TWP. 2N, RANGE 9E, W.M.

CORNER DESCRIPTION



1/4 cor

Rock - 4x6x12 mhd.

1/4 W. side

Ed. by V. RE. 1446

W.O. REF.

CARD 1 OF 3

SECTION OR SUBDIVISION

11/12

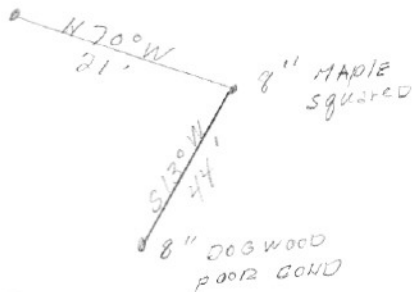
CORNER No.

376

TWP. 2N, RANGE 9, E, W.M.

CORNER DESCRIPTION

24" DP-DOWN



1/4 SEC 12 8" Square

Maple 3' above ground

poor condition

PHOTO HR 67-5-728

A. Hutson 9-27-67

W.O. REF.

CARD

2

OF

23

SECTION OR SUBDIVISION

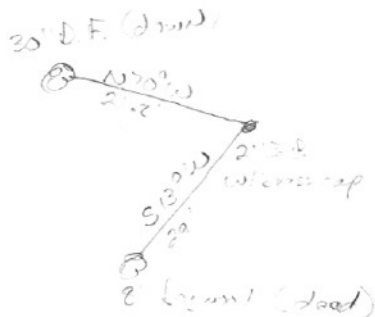
1/4 cor 11/12

CORNER No. ....

376

TWP. 2N, RANGE 9E, W.M.

CORNER DESCRIPTION



Fd. both orig.

B.T.'s + set

2" I.P. w/ brass

cap. - Aug. 1970

W.O. REF. \_\_\_\_\_

CARD

3

OF

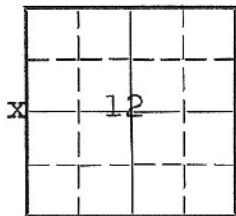
3

## LAND CORNER RECORD

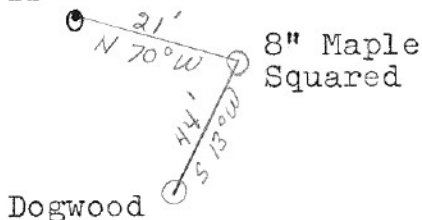
CC0376 5680-2

1. T 2N R 9E No. 12 Cor. W<sup>1</sup>/<sub>4</sub> Mer. W State Oregon (Rectangular) N. F. \_\_\_\_\_ Dist. \_\_\_\_\_

2. Corner Status



3. Original Description \_\_\_\_\_ Vol. \_\_\_\_\_ Page \_\_\_\_\_ Where Recorded \_\_\_\_\_

4. Description of Corners: W 1/4 Cor. 8" Sq. Maple 3' above ground  
poor condition5. Investigation Notes: BT's. 24" DF (down) N 70° W 21'  
8" Dogwood S 13° W 44' Poor Cond.Down  
DF7. Photo Identification HR 67Photo No. L 5, P. 7&8

Ident. By: \_\_\_\_\_

8. Plane Coordinate Position Data

State \_\_\_\_\_ Zone \_\_\_\_\_

X \_\_\_\_\_

Y \_\_\_\_\_

Estab. By \_\_\_\_\_

Field Book No. \_\_\_\_\_

Where Filed \_\_\_\_\_

9. Evaluation

Authentic \_\_\_\_\_

Needs Verif. \_\_\_\_\_ Monument \_\_\_\_\_

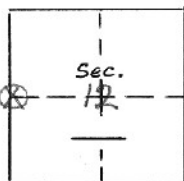
Re-estab. \_\_\_\_\_ Survey \_\_\_\_\_

Land Status \_\_\_\_\_

6. Signed A. Hutson Title \_\_\_\_\_ Date 9/27/67

## PROPERTY CORNER INVESTIGATION

LOCATION

T. 2N R. 9EMer. W/M State Oreg.Forest MT. H Dist. H.R.

## LEGEND

- Corner searched—no evidence  
 Corner or accessory found  
 Corner marked by perm. mon.

## DESCRIPTION OF FOUND CORNER

MATERIAL: 59 Maple SIZE: 8"  
 HEIGHT ABOVE GROUND: 3' CONDITION: POOR  
 MARKINGS: Squared

## DESCRIPTION OF FOUND ACCESSORIES

D.F B.T. (down) 24"  
 Dog wood. 8" POOR condition

NOTE: Indicate full investigative details on back of form.

## PHOTO IDENTIFICATION

Symbol & date H.R. 67- Line or Roll 5-7-8 Exposure \_\_\_\_\_  
 How Identified Field Where filed H.R.C. Forest

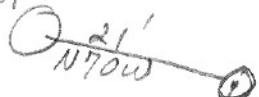
RECOVERED BY: \_\_\_\_\_

DATE: 9/27/67 TITLE: A. Hutson



Down.

DF



Maple Squared  
8" Dia.  
Poor Condition

