

SECTION OR SUBDIVISION

6/5
7/8

CORNER No. 365

TWP. 1 N., RANGE 11 E., W.M.

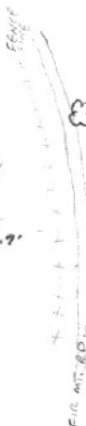
CORNER DESCRIPTION

NEW BT.
6" PINE

N 55° W
100'

N 56° E
83'
E
79.7'

OLD RD. BED.



FD. 1" I.P. IN MD. OF ROCK + 8x8x10"
ROCK w/"X" ON UPPER SIDE. ALSO FD.
1 BT. w/BLAZE + AXE MARKS.
REPLACED 1" I.P. w/BRASS CAP SET
IN APPROX. 8"x10" CONCRETE CYLINDER
(2 1/2. COFFEE CAN) CEMENTED TO REBAR
STUCK IN G.R.D. SET NEW BT.
PUT REF. TAG E. OF COR. E. SIDE
FIRE MT. RD. (5-78)

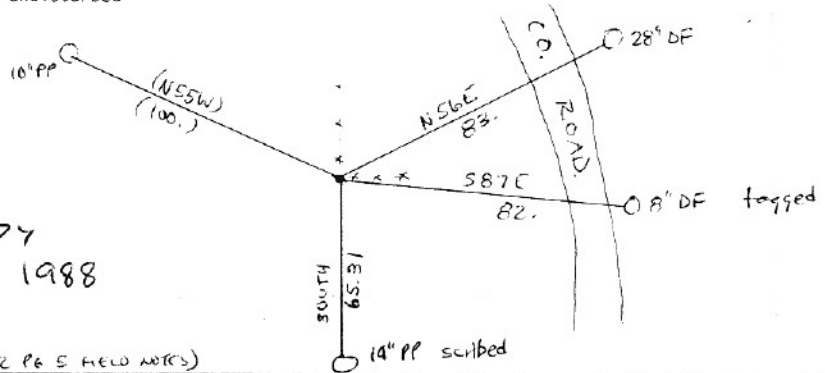
W.O. REF. _____

OVER →

CARD 3 OF 3

TYPE OF MONUMENT; TIES TO BEARING TREES, OBJECTS, etc.

Found Hood River county brass cap (SKETCH)
set in concrete, with "X"-marked stone alongside. Monument slightly loose, but
undisturbed



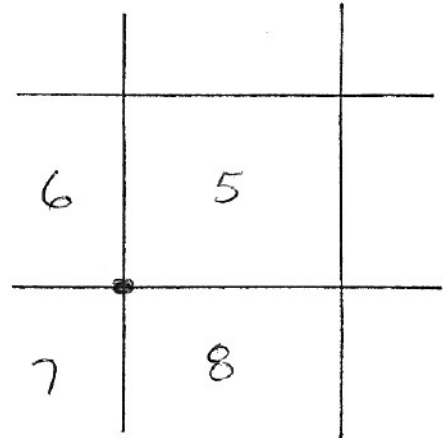
Visited by
Trantow 1988

(BK 2 PG 5 FIELD NOTES)

LAND CORNER MONUMENT RECORD

LOCATION

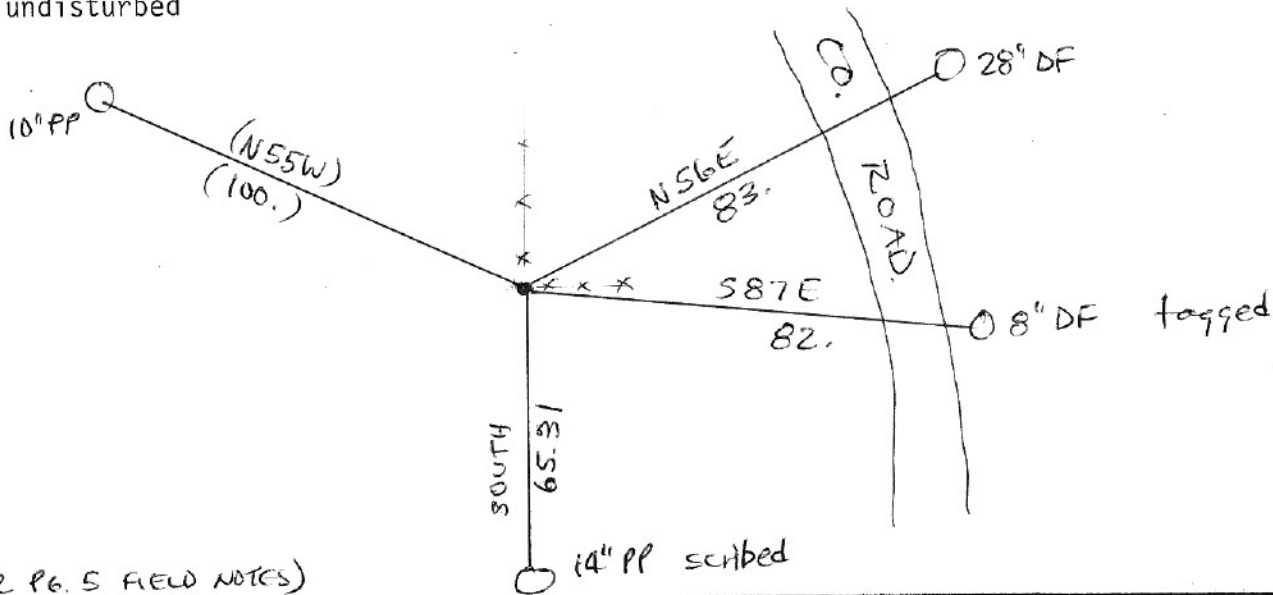
	6	5	4	3	2	1
	7	8	9	10	11	12
	18	17	16	15	14	13
	19	20	21	22	23	24
	30	29	28	27	26	25
	31	32	33	34	35	36



TOWNSHIP 1 North RANGE 11 East SECTION 8

TYPE OF MONUMENT; TIES TO BEARING TREES, OBJECTS, etc.

Found Hood River county brass cap (SKETCH)
set in concrete, with "X"-marked stone alongside. Monument slightly loose, but
undisturbed



(BK. 2 PG. 5 FIELD NOTES)

REMARKS: (History of corner, etc.)

See corner card #365

REGISTERED
PROFESSIONAL
LAND SURVEYOR

Terry N. Trantow

OREGON
DEC. 15, 1978
TERRY N. TRANTOW
1799

NAME *Terry N. Trantow*

TITLE LS 1799

DATE 2 February 1989