

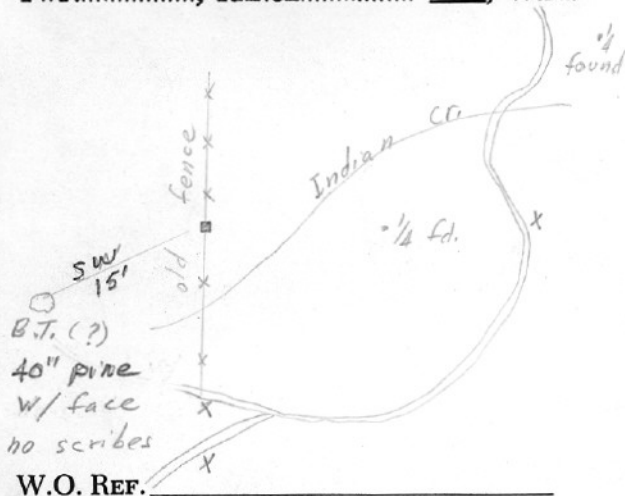
SECTION OR SUBDIVISION

16	15
21	22

CORNER No. 318

TWP. 1 N., RANGE. 11 E., W.M.

CORNER DESCRIPTION



Sec. Cor.

Mound of rock

tag on 6" pine, 5' SW

Cor. in (?) - checks

for alignment & dist -

has been used by

land owners - accord

to V.B.E. 1953

CARD OF

CL 318

HOOD RIVER COUNTY RESTORATION FORM

Section: 16 Township: 1N Range: 11E DATE: 6/27/13

CORNER DESIGNATION
SOUTHEAST CORNER

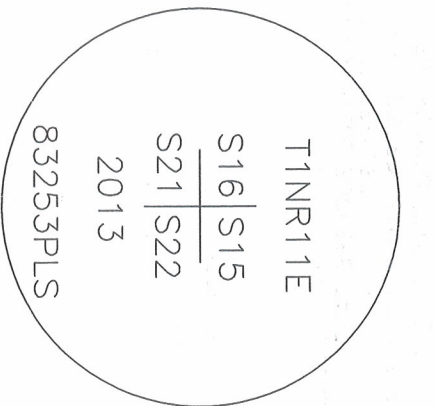
- Condition Report Only
- Not Found
- X--- Renewed
- Unrecorded
- ===== Surveyed In
- Referenced Out

Previous Renewals/Surveys, etc. US DEPUTY SURVEYOR HENRY MELDRUM CONTRACT NO. 436 DATED APRIL 26, 1882 SUBDIVIDED THIS TOWNSHIP NOV. 1ST THROUGH THE 10TH, 1882; HOOD RIVER COUNTY CORNER CARD NO. 318; CS 79003

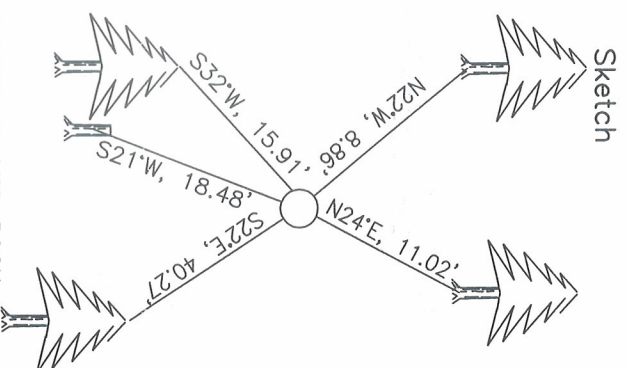
Monument(s) & Accessories Found: (Condition and Source)

FOUND 3' DIAMETER MOUND OF STONE WITH POINTED ROCK AT CENTER AT GLO BEARING AND DISTANCE FROM SW (OBT) STUMP UNDER OLD FENCE LINE LYING ON GROUND. CREEK CALL TO THE SOUTH FIT THE GLO NOTES. THE SW (OBT) STUMP HAS EXTENSIVE AXE MARKS ON IT BUT NO VISIBLE SCRIBING. WE FOUND AN OLD METAL REFERENCE TAG MARKED "STEBCO '57" ON SAID STUMP.

Monument Detail



NOT TO SCALE



Monument Set (Procedures and Description)

WE SET A 1"X 3/6" IRON PIPE WITH 3" BRASS CAP TO REPLACE THE FOUND POINTED ROCK AND RAISED A 4' DIAMETER MOUND OF STONE AROUND IT LEAVING 1.0' EXPOSED.

New Accessories

NEW ACCESSORIES WERE ESTABLISHED WITH A SILVA HAND COMPASS AND BEARINGS ARE REPORTED TO THE NEAREST DEGREE DISTANCES WERE MEASURED TO A SPIKE AT SIDE CENTER WITH A STEEL BUCKERS TAPE

NEW REFERENCES:

- 8" FIR SCRIBED "T1N R11E S15 RP", N24°E, 11.02' SIDE CENTER
- 22" FIR SCRIBED "T1N R11E S22 RP", S22°E, 40.27' SIDE CENTER
- 16" FIR SCRIBED "T1N R11E S21 RP", S32°W, 15.91' SIDE CENTER
- 10" FIR SCRIBED "T1N R11E S16 RP", N22°W, 8.86' SIDE CENTER
- SET STEEL FENCE POST NORTH, 1.0'

Location & Comments Compass Declination 18' EAST Surveyors Seal

Firm/Agency LONGVIEW TIMBER CORP.

Address 10 INTERNATIONAL WAY
LONGVIEW, WA 98632

Party Chief DAVID L SIMES

Notes DAVID L SIMES

Witness JASON HARPER
COLEY CAMPBELL

REGISTERED
PROFESSIONAL
LAND SURVEYOR

OREGON
NOVEMBER 10, 2009
JASON L. SIMES
832556PLS

Renews 6-30-2014