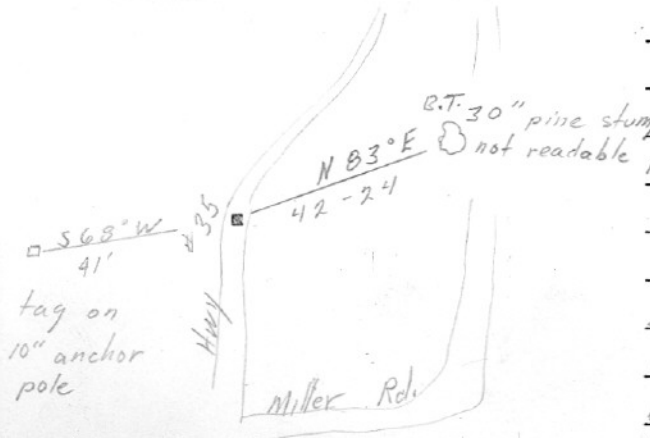


SECTION OR SUBDIVISION $\frac{1}{4}$ COR 21 | 22

CORNER No. 313

TWP. 1N, RANGE 10E, W.M.

CORNER DESCRIPTION



$\frac{1}{4}$ Cor.

$\frac{3}{4}$ " pipe flush with pavement

an old i.p. @ ft. of stump

V.B.E. states that he set this cor. from orig. L.O. notes - checked by State Hwy. Engrs. signed - Van R. Embree Oct. 6, 1961

W.O. REF. _____

CARD 1 OF 2 OVER →

3/4" pipe has disappeared.

Reset corner Oct. 28, 1987

set RR spike

(see card 2 of 2)

RTA

313

SECTION OR SUBDIVISION

1/4 cor 21/22

CORNER No.

313

TWP. 10, RANGE 10, W.M.

CORNER DESCRIPTION

set RR spike w/punch mark
 approx 4' E. of Hwy 35

H.R.E.C. Pole #

000020

S71°W 35.18'

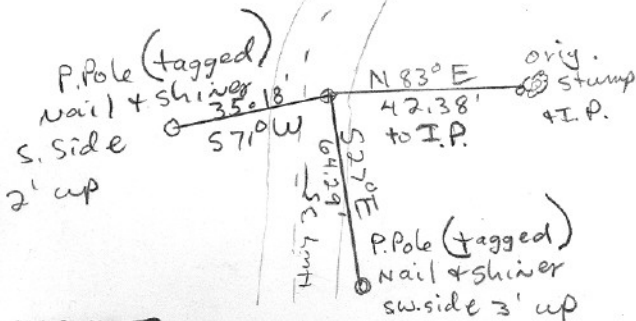
28

H.R.E.C. Pole #

000000

S27°E 64.29'

1

~~W.O. REF.~~

Oct. 28, 1987

CARD

2

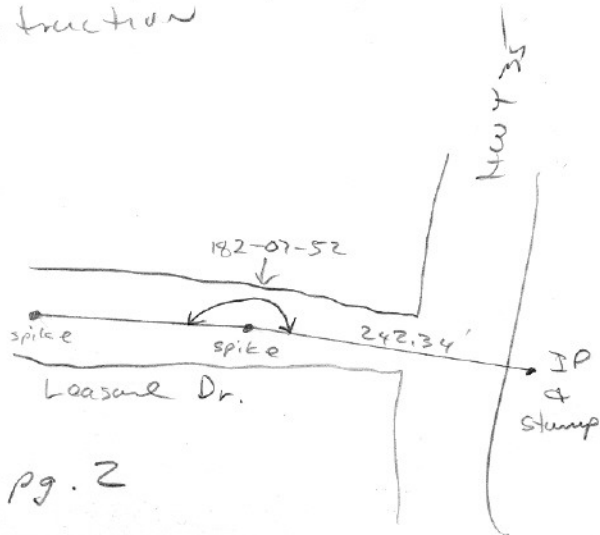
OF

2

over →

Jan. 1999

set 2 RR spikes ON & Leasure Dr.
Turned X to pipe at face of BT stamp.
1/4 cor gone. will reset upon
completion of construction



see field bk. 1-94 pg. 2