

SECTION OR SUBDIVISION

TWP..... 15, RANGE..... 10 E, W.M.

CORNER No. .... 268 .....

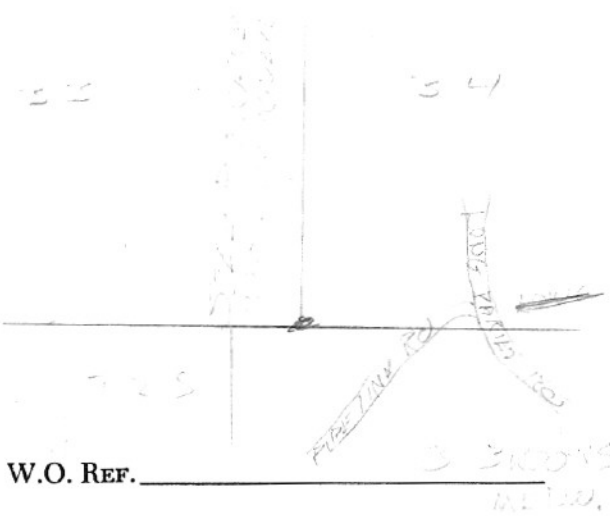
CORNER DESCRIPTION

BASALT STONE + DN TOP  
W. FIR 8" N 48° E 18"  
D. FIR 14" N 16° W 30"

This corner re-monumented  
in 1979 by Larry  
Bishop  
see back

W.O. REF. \_\_\_\_\_

CARD..... OF .....



268

Description of monument and accessories established to perpetuate the original location of this corner

Set 2 1/2" Brass Cap on a 2 1/2" x 30" Galvanized Iron Pipe in a mound of stone-Buried stone upside down next to monument set.

16" White Fir N 11 E -14.1 feet scribed T1S R10 E S 34 upper blaze and a lower blaze scribed BT and with a 3/4" Brass Disk stamped LS 896

Set Guard Post East with U.S.F.S. sign 54-4 and added U.S.F.S. BT signs and red paint to 3 BT's

I hereby certify the above corner re-established as herein described on Sept. 5, 1979

Brass Cap Marked

T1S	R10E
	S33   S34
	S3
T2S	1979
PLS	896

REGISTERED PROFESSIONAL LAND SURVEYOR

*Larry D. Bishop*

OREGON  
JULY 31, 1959  
LARRY D. BISHOP  
896

Office of County Surveyor ..... County of Hood River  
 State of Oregon ..... I hereby certify that the within instrument was filed in this office  
 for record on the ..... day of .....  
*[Signature]* by .....  
 (COUNTY OFFICIAL) (DEPUTY)

CERTIFIED RECORD OF LAND CORNER MONUMENTATION

CC0268

**History of original corner establishment:**

Deputy Newton Clark set a 4' x 4" post in 1884 and marked

16" Black Pine N58 E- 8 LKS.

20" Black Pine S10 E-13 LKS.

4" Willow S40 W- 30 LKS.

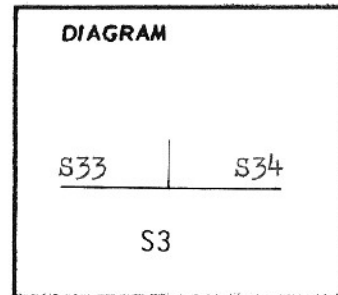
4" Fir N8 W- 8 LKS.

Re-established in its original position by Deputy Fred Mensch in 1912

Set Basalt stone 12 x 10 x 8 ins. with 3 grooves on E & W edges and marked

6" Fir N68 E - 30 LKS.

6" Fir N34W - 8 LKS.



**Description of corner evidence found:**

Stone broken in pieces "X" on top approx. 12 x 10 x 8 grooves indistinct. 51.55 East of stone at C.C. S33

S4 SE

Orig. 6" Fir now 8" Wh. Fir no evidence of being previously scribed N 34 W 5.3 feet

Orig. 6" Fir now 12" Wh. Fir stump badly rotted but with scribing visible N 68 E 19.8 feet

Description of monument and accessories I established to perpetuate the original location of this corner

Set 2½" Brass Cap on a 2½" x 30" Galvanized Iron Pipe in a mound of stone-Buried stone upside down next to monument set.

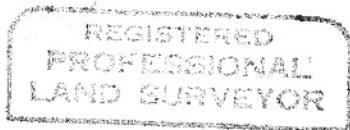
16" White Fir N 11 E -14.1 feet scribed T1S R10 E S 34 upper blaze and a lower blaze scribed BT and with a ¾" Brass Disk stamped LS 896

Set Guard Post East with U.S.F.S. sign 54-4 and added U.S.F.S. BT signs and red paint to 3 BT's

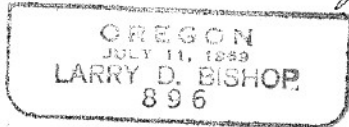
I hereby certify the  
above corner re-established  
as herein described on  
Sept. 5, 1979

Brass Cap Marked

T1S	R10E
S33	S34
S3	
T2S	1979
PLS 896	



*Larry D. Bishop*



Office of County Surveyor ..... County of Hood River .....  
State of Oregon ....., I hereby certify that the within instrument was filed in this office  
for record on the ..... day of .....  
*[Signature]* ..... by .....  
(COUNTY OFFICIAL) (DEPUTY)