

SECTION OR SUBDIVISION

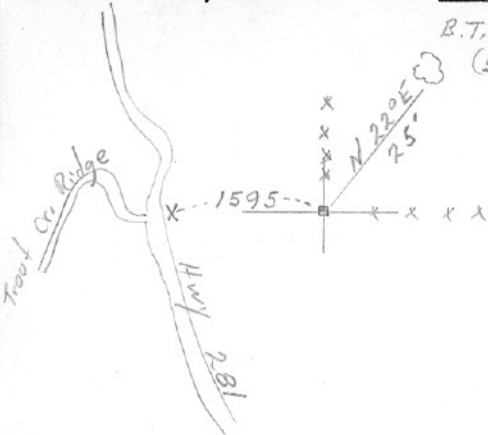
18 | 17

19 | 20

CORNER No. 248

TWP. 1 N., RANGE 10 E, W.M.

CORNER DESCRIPTION



Sec. Cor

I. pipe 3/4" x 12" and  
fence cor.

fd. by V.R.E - 1950

tag on fc. post at cor.

(x) indicates location  
of sec. line marker

SET 2" IP 24" IN CONCRETE

BRASS CAP MKD. PLACED

111/10E EXISTING  
S18/S17 3/4" WATERS19/S20 PIPE 36" LONG  
ALONG SIDE

625 IP

W.O. REF. \_\_\_\_\_

CARD 1970 OF \_\_\_\_\_

HR COUNTY SET 3-26-70