

SECTION OR SUBDIVISION

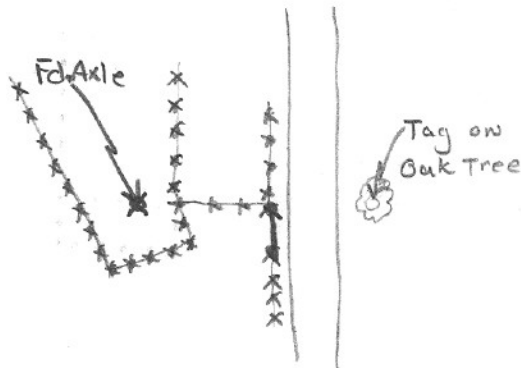
$\frac{2}{11}$

CORNER No. 247-A

TWP. 1.N, RANGE 10 E, W.M.

CORNER DESCRIPTION

N $\frac{1}{4}$  Sec 11



Found Axle - Position  
was verified by Passel (Present  
land owner) as the same since  
1950's - also verified by E.  
Nance as same location of  
corner of Log Cabin  
H.R.C. 1977

W.O. REF. \_\_\_\_\_

CARD 2 OF 23

SECTION OR SUBDIVISION

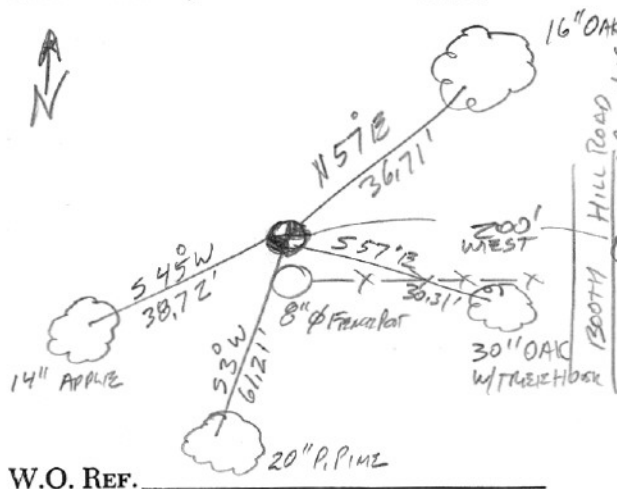
1/4 2/11

CORNER No.

247A

TWP. 1N, RANGE 10 E, W.M.

CORNER DESCRIPTION



9/02 FD 1 1/2" AXLE @  
 W/END OLD FENCE, NR  
 FENCE POST; SET CARSONITE  
 POST, TIED TUBES AS NOTED,  
 TIED FOR SEARCH w/ HANDFORD  
 GPS; SET LOCATION TAG ON  
 ROAD

W.O. REF.

ETREX: 45-35-31.2

121-32-15.4

CARD

3

OF

3

(1 NOT FOUND)