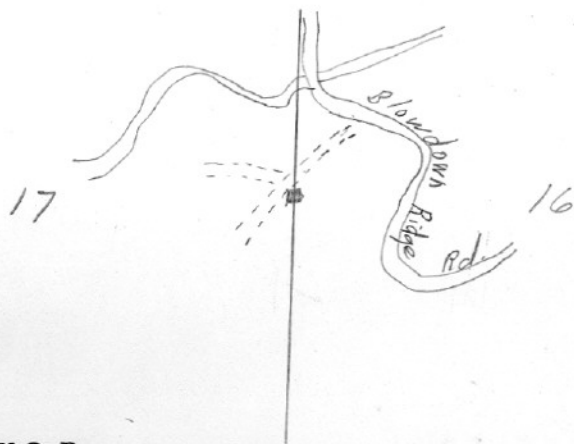


SECTION OR SUBDIVISION

CORNER No. 210

TWP..... 1N, RANGE..... 9E, W.M.

CORNER DESCRIPTION



1/4 Cor
4' Stake & pile of rock
in old rd. bed
B.T.'s - 20" broken hem.
N 50° E - 9' ; 20" hem
stump - S 30° W - 12'
Ed. by J. D. Pedersen
July, 1955
tag on 16" D. Fir stub
36" dia. - on NE side
Cor. bears S 70° E - 20'

W.O. REF. _____

see back

CARD..... OF

Cor is in old logging between switch-
back on main rd. + old logging spur.

Located in lowest of slight ravine.