

SECTION OR SUBDIVISION

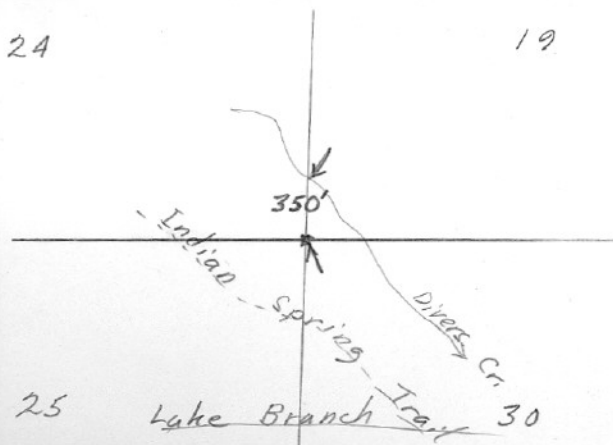
CORNER No. 207

TWP. 1N, RANGE 8, 9E, W.M.

CORNER DESCRIPTION

24

19



W.O. REF. _____

See back

Sec. Cor
10" x 10" x 8" rock
R.T.S - 24" D. Fir stump;
N.W. 15' mhd. T1N R9E
S 24 BT ; 20" down W.
Fir SW 6' mhd. T-S-B.T.;
12" down W. Fir SE 10' ;
mhd T1N - R9E - S30 - B.T.
Fd. by V.B.E. 4/17/44

CARD OF
00612 →

207

207



MMD.
 5" Corner N89E 44.8' scribbled TIN RBE 519
 6" Wh. Fix 57E 32.1' " TIN RBE 530
 8" Wh. Fix 570W 19.0' " TIN RBE 525
 8" Homloch N22W 36.3' " TIN RBE 524

↖
 From Bishop Survey
 # 80091

Follow Ore. Lum. Co. log rd. to boundary
 line mark - follow marked line S. to corner
 BTs in bad condition

OREGON CORNER RESTORATION FORM

Section 30 Township 1 N Range 9 E

County Hood River Date October 11, 2011

CORNER DESIGNATION

Southwest Corner Section 30, T1N, R9E 15
Northwest Corner Section 31, T1N, R9E 98
Southeast Corner Section 25, T1N, R8E 25
Northeast Corner Section 36, T1N, R8E 25

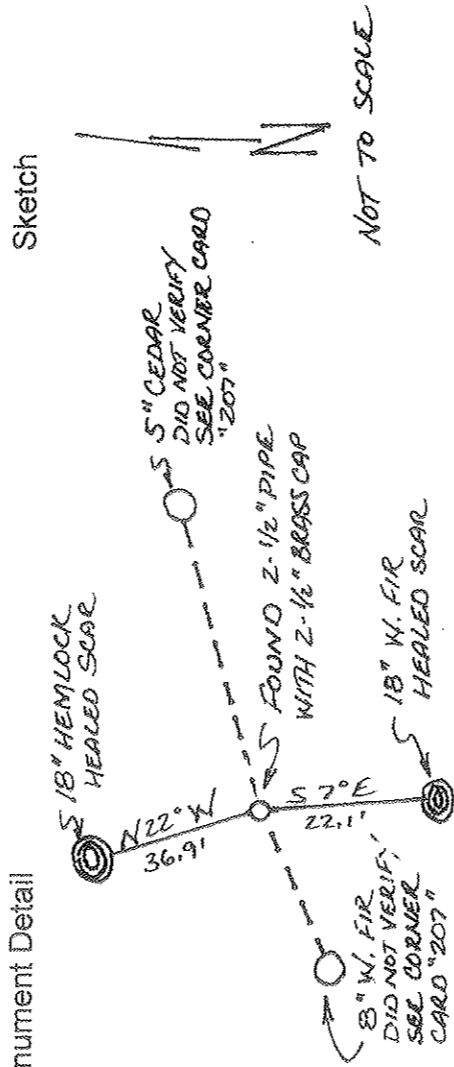
- Condition Report Only
- Not Found
- Renewed
- Unrecorded
- Surveyed In
- Referenced Out

Previous Renewals/Surveys, etc. Corner established by Bishop Surveying in survey for U.S.D.A. Forest Service, Region 6, filed November 5, 1980, CS-80091

Monument(s) & Accessories Found: (Condition and Source)

Found 2-1/2" Pipe with 2-1/2" brass cap, 18" Hemlock N22°W at 36.9' and 18" W. Fir S07°E at 22.1' references noted from Bishop survey on Corner card 207

Monument Detail



Monument Set (procedures and Description)

N/A

New Accessories

No new accessories added

Location & Comments
No comments

Compass Declination 16°E
Firm/Agency:

Ford Land Surveying
PO Box 353
Klickitat, WA 98628
Party Chief: George Ford
Notes: Field Book - 2011-4
Witness: Brett Crooks

Surveyor's Seal

