

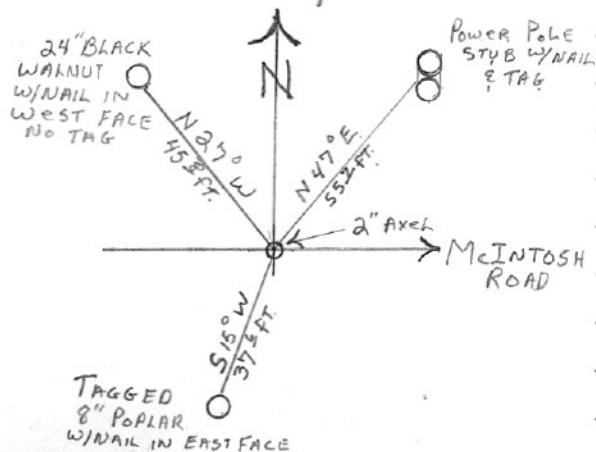
SECTION OR SUBDIVISION

Sec. 12 | 17  
COR. 13 | 18

CORNER No. 195

TWP. 15, RANGE 10E, W.M.

CORNER DESCRIPTION



FOUND 2" AXEL, SET FLUSH  
IN ROCK GARDEN. (CINDERS)  
NEAR WEST END OF McINTOSH  
ROAD @ BRONSON RANCH.  
11-2-71

W.O. REF.

CLEAR CR. RD.

CARD 1 OF 2

SECTION OR SUBDIVISION

$\frac{12}{13} \frac{7}{18}$

CORNER No. ....

195

TWP. 15, RANGE 9<sup>1</sup>/<sub>10</sub> E, W.M.

CORNER DESCRIPTION

Ed 2" Axle in  
Back Garden  
Existing reference  
on powerpole No  
good. Pole Has been  
moved. Axle set  
in 1959 by Mart  
Perkins by a  
stadia survey of  
sec 12. Axle fits  
good & is best  
(over)

W.O. REF. \_\_\_\_\_

Accepted Corner  
ACK Mar. 1977

CARD .....

OF .....

(195)

Evidence of  
corner. Axle  
fits good for  
porportionate  
dist. along Twp.  
boundry and also  
fits good for dist  
of the call from  
the N 1/4 cor of sec  
13 T15, R9E.

$$\begin{array}{r|l} 12 & 7 \\ \hline 13 & 18 \end{array}$$

T15 R9E 10