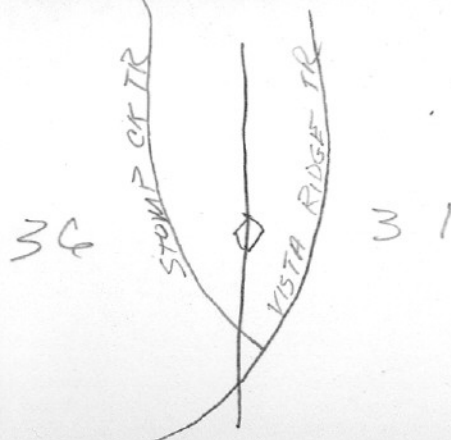


SECTION OR SUBDIVISION

CORNER No. 132

TWP. 15, RANGE 8 1/2 9 E, W.M.

CORNER DESCRIPTION



1/4 COMM. SEC 36 R8 1/2 E

1/2 SEC 31 R9 E

I.P. W/BRASS CAP

BT'S W.F. 38' 297° 33'

MT. HEM 24" 95° 12'

NO SEC LINE MARKER

TO FIND GO N. FROM STUMP

CR. TRAIL XING SEC LINE 31/36

2190 FT.

FOUND J.D. PEDERSON 9/2/53

OVER

W.O. REF. _____

CARD _____ OF _____

FOUND C-28-67 JOHN BOZAK

BT SILVER FIR 24" N 59°W 36'
WEST HEM. 16' S 72°E 12'

PIPE PARTLY COVERED BY MILLER

SNAE GOR. IS ALSO WITH MOCCASIN

SNAE UNIT & AUD BT. PROBABLY BE
LOST IN LOGGING