

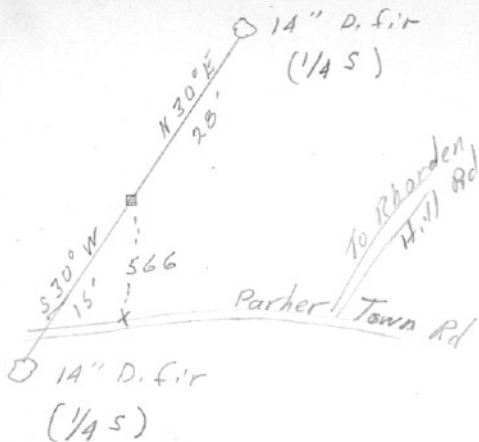
SECTION OR SUBDIVISION

14 | 13

CORNER No. 113

TWP. 2N, RANGE 9E, W.M.

CORNER DESCRIPTION



GAUV I.P. 1/2" 3" ABOVE GROUND

MOULD OF ROCK AT BASE

D.F. 18" S40°W 15 FEET

" " N30°E 24" HAS 25.100 TO

NOT ORIGINAL PTS HAVE OVER-

GROWN FACTS

fd. by V.R.E. - Mar. 1946

Line mark on tree @ x

fd. 8/30/60 by R.W.

W.O. REF.

CARD OF