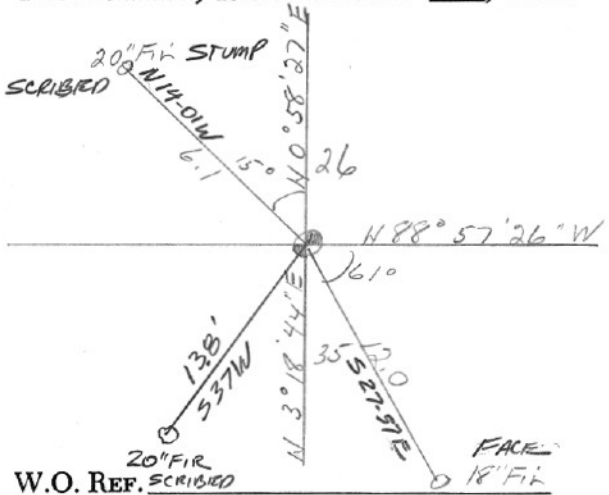


SECTION OR SUBDIVISION 26-35-

CORNER No. 97

TWP. 1 N., RANGE 9 E, W.M.

CORNER DESCRIPTION



1/4 Cor 26-35
1 1/2" IP & Cap

y - 683,236.90
x - 1,702,873.95

6-85

O.S.F.D. SET SW BT, SCRIBED
NW BT & SET CEDAR POST

W.O. REF. SCRIBED

Tenn-5017 #3737 Cor #275

CARD OF