

SECTION OR SUBDIVISION 30-31

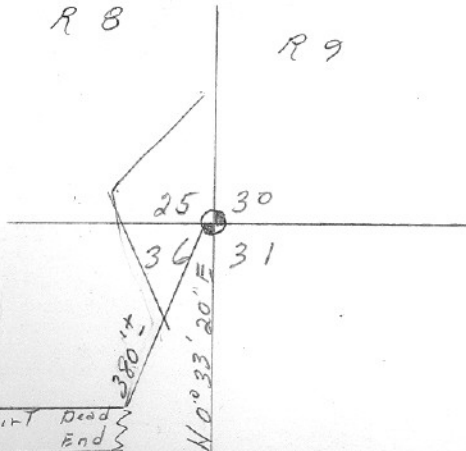
CORNER No. 91

TWP. 1N., RANGE 9 E, W.M.

CORNER DESCRIPTION

R 8

R 9



N W Cor Sec 31
fd 1 1/2" Pipe w/cap

Y - 683,619.03

X - 1,678,251.48

10' dirt Dead Rd Ends

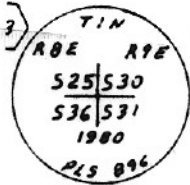
W.O. REF.

Tennessee #3737 Cor # 258

see back

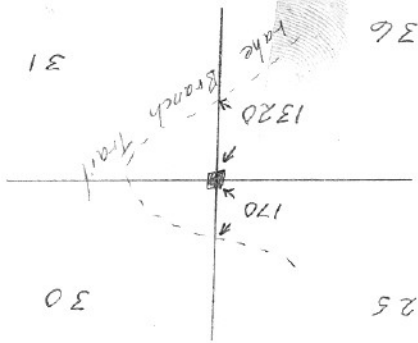
CARD OF OVER

From Bishop Survey # 80091



Found and Buried alongside monument set
 a 1 1/2" Iron Pipe with a 2" Aluminum cap
 Orig. 26" Now uprooted D-Fir snag - Hole
 Bears N45W 4.6'
 MHD.
 RIA SPIG in center of 28" D-Fir STUMP
 N21W 6.3'
 RIA SPIG in center of 28" D-Fir STUMP
 S78E 19.5'
 16" Hemlock N62E 49.2' scribed TINR9E530

Sec. Cor.
 Rock - fd. by V.B.F. - 2/15/44
 B.T.'s
 16" D. fir snag
 TIN R9E S31
 22" D. fir snag
 scribed on bark
 R.G.S.
 11/11/55



OREGON CORNER RESTORATION FORM

Section 30 Township 1 N Range 9 E

County Hood River Date October 8, 2011

CORNER DESIGNATION

- Southwest Corner Section 30, T1N, R9E
- Northwest Corner Section 31, T1N, R9E
- Southeast Corner Section 25, T1N, R8E
- Northeast Corner Section 36, T1N, R8E

- Condition Report Only
- Not Found
- Renewed
- Unrecorded
- Surveyed In
- Referenced Out

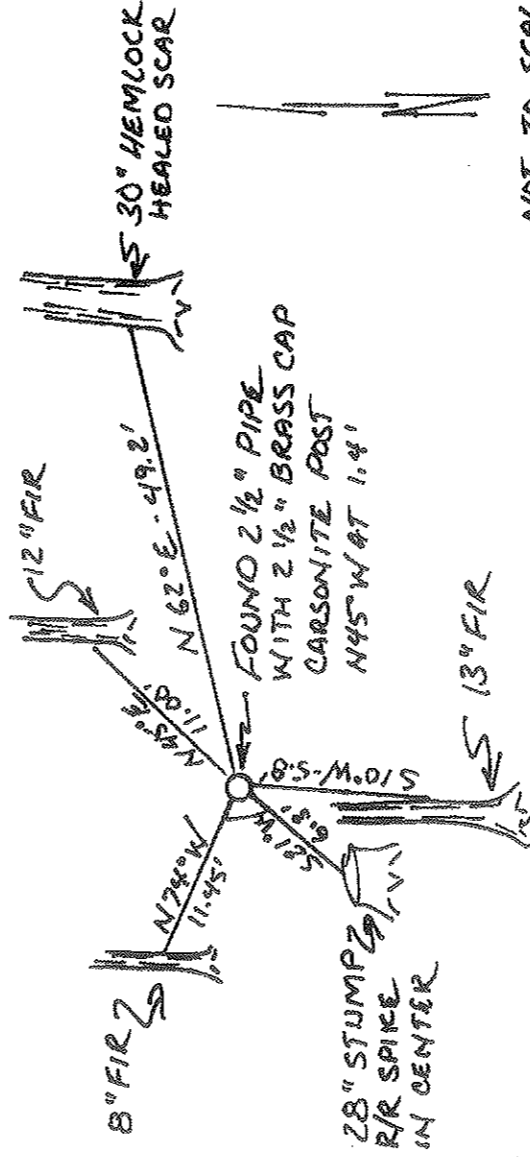
Previous Renewals/Surveys, etc. Corner was established by Newton Clark by GLO survey commenced June 9, 1884. Corner card 91 notes original BT stump well N45°W at 4.6'. Survey by Bishop Surveying in survey for U.S.D.A. Forest Service, Region 6, filed November 5, 1980. CS-80091 accepted and remonumented this position.

Monument(s) & Accessories Found: (Condition and Source)

Found 2-1/2" Pipe with 2-1/2" brass cap. Fir stump with Railroad spike S21°W at 6.3'; 30" Hemlock N62°E at 49.2' see corner card 91.

Monument Detail

Sketch



NOT TO SCALE

Monument Set (procedures and Description)

N/A

New Accessories

12" Fir N45°E at 11.00' (scribed: T1N R9E S30 BT); 8" Fir N74°W at 11.45' (scribed: T1N R8W S25 BT); 13" Fir S10°W at 5.80' (scribed: T1N R8E S36 BT); New accessories have location tag above scribe and 6" spike at base of scribe, all oriented toward monument. Bearings taken with hand compass having declination of 16° East

Location & Comments
No comments

Compass Declination 16°E
Firm/Agency:
Ford Land Surveying
PO Box 353
Klickitat, WA 98628
Party Chief: George Ford
Notes: Field Book - 2011-4
Witness: Brett Crooks

Surveyor's Seal

