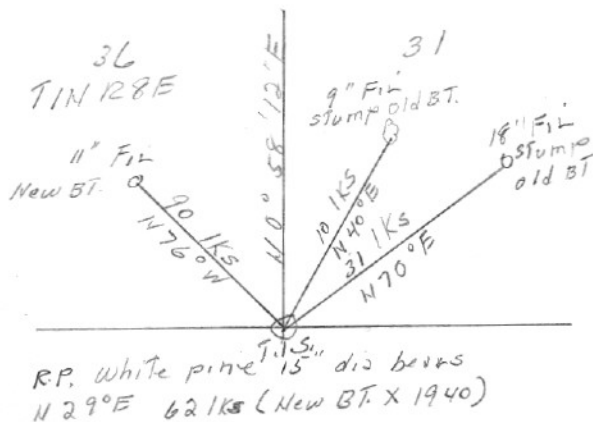


SECTION OR SUBDIVISION 31

CORNER No. 90

TWP. 14, RANGE 8+9 E, W.M.

CORNER DESCRIPTION



SW Cor Sec 31
 fd Brass Disc Stamped
 610 TIN
 128E 129E
 536/531
 1940

Y = 678,384.64
 X = 1,678,181.81

W.O. REF. _____

Tennessee #3737 Cor 257

(see sketch on back)

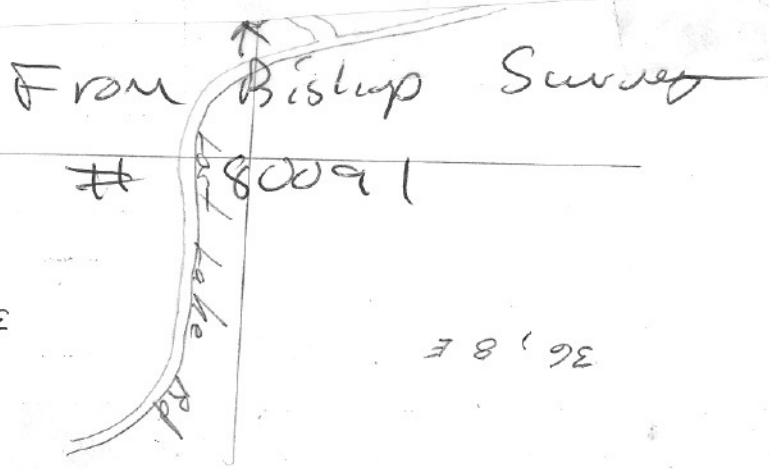
CARD OVER OF

90

15

S.C.
 TIN
 536 | 531
 RBE R9E

Found
 Orig. 4" Now Down 18" D-Fir stump N42E 6.6'
 Orig. 15" Fir N70E 22.6'
 Both destroyed by road construction
 MHD.
 11" Now 18" D-Fir N76W 54.9' Healed Blaze
 20" wh. Fir N10E 60.4' Scribed TINR9E 531



31 9E

36 8E