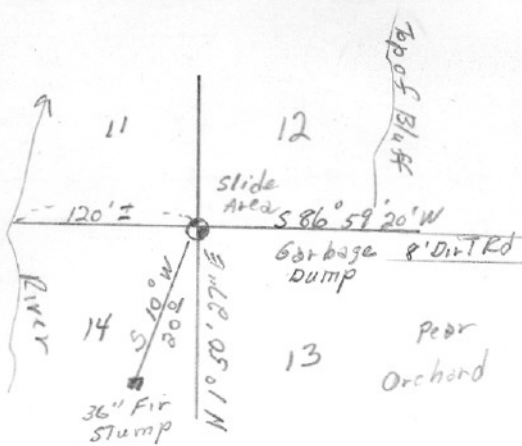


SECTION OR SUBDIVISION 11, 12, 13, 14

CORNER No. 81

TWP. 1N, RANGE 9 E, W.M.

CORNER DESCRIPTION



SE Cor Sec 11  
 Fd 5/8" Iron Rod with 1" pipe  
 Driven in Bank Horizontal  
 Directly over corner

Y - 698, 802.15  
 X - 6705, 704.67

W.O. REF. 3737 - Tenneson # 246

Hood River - County Forest

CARD OF