

LAND CORNER MONUMENT RECORD

INDEX FILE No. A21 USDA-FOREST SERVICE

LOCATION

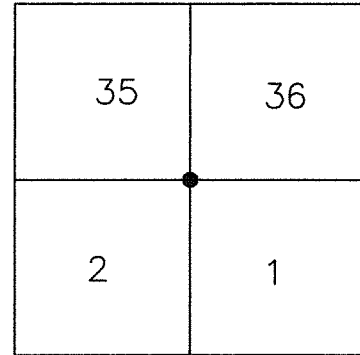
CC 79

HOOD RIVER COUNTY
STATE OF OREGON
WILLAMETTE MERIDIAN

R. 8 E.

T.
2
N.

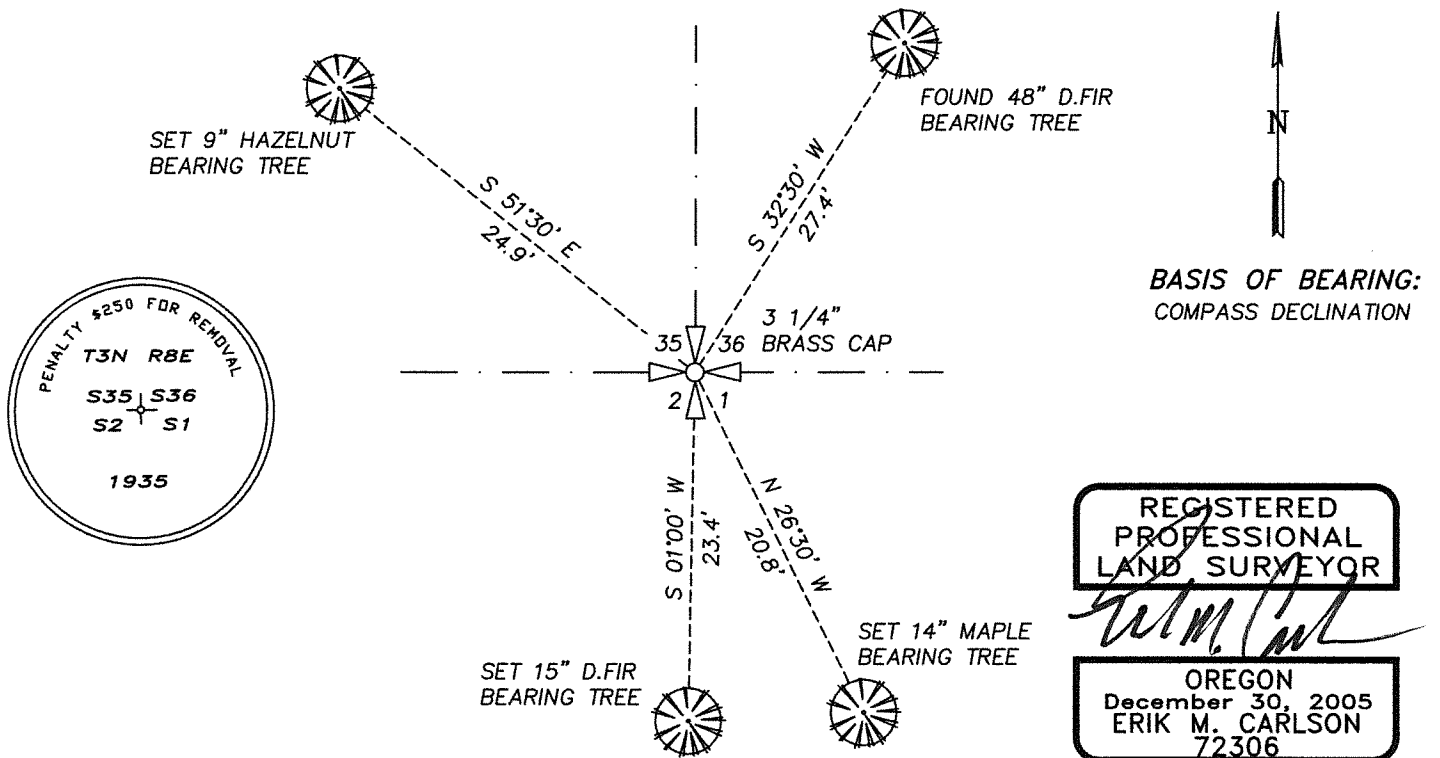
					●	
	6	5	4	3	2	1
	7	8	9	10	11	12
	18	17	16	15	14	13
	19	20	21	22	23	24
	30	29	28	27	26	25
	31	32	33	34	35	36



TOWNSHIP 2 NORTH RANGE 8 EAST SECTION CORNER 1/2/35/36

TYPE OF MONUMENT; TIES TO BEARING TREES, OBJECTS, etc.

(SKETCH)



Found 3 1/4" brass cap monumenting the Section corner (A-21) common to Section 1, 2, 35 and 36 of Township 2 North, Range 8 East.

Existing reference:
48" D.fir bears (mag) North 32°30' East, a distance of 27.4 feet. set tags and washer.

New references:
14" Maple bears (mag) South 26°30' East, a distance of 20.8 feet. set tags and washer.
15" D.fir bears (mag) South 01° West, a distance of 23.4 feet. set tags and washer.
9" Hazelnut bears (mag) North 51°30' West, a distance of 24.9 feet. set tags and washer.

REMARKS: (History of Corner, etc.)

- 9/1935 - U.S.C.E. SET 3-1/4" BRASS CAP, BONNEVILLE LANDS PROJECT, MAP 0-7-05 OHR
- 12/1968 - RECOVERED U.S.C.E. BRASS CAP. L.S.183, C.S.1321
- 9/1976 - RECOVERED U.S.C.E. BRASS CAP, L.S. 460, C.S.76056

DIRECTIONS TO CORNER: FROM WYETH CAMPGROUND ENTRANCE HEAD EASTERLY ON WYETH ROAD APPROXIMATELY 1000 FEET TO THE INTERSECTION WITH I-84. THEN PROCEED NORTHERLY UNDER I-84 AND ENTRANCE ONTO THE HIGHWAY HEADING WESTBOUND APPROXIMATELY 2,200 FEET. MONUMENT IS NORTH OFF HIGHWAY, DOWN EMBANKMENT APPROXIMATELY 115 FEET ON THE RIGHT OF WAY FENCELINE.

NAME: ERIK M. CARLSON

DATE: JULY 20, 2022

TITLE: TERRA SURVEYING

REGISTRATION NO. OR PLS 72306

SECTION OR SUBDIVISION

35/36
277

TWP. 3/2, RANGE 8 E, W.M.

CORNER No. 79

CORNER DESCRIPTION

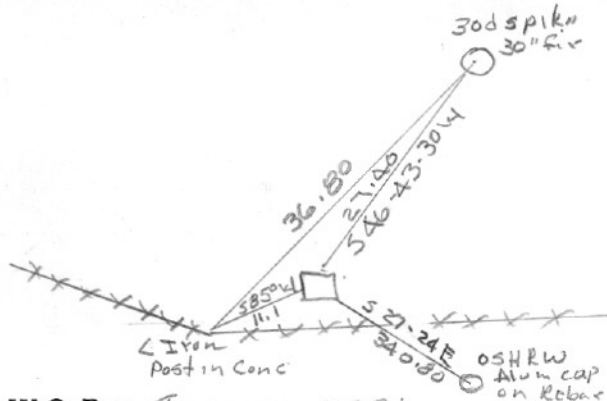
USE Brass Cap

Found 12-12-68

Verl Fraley-Tennessee

Ed by Clair Pence

1976



W.O. REF. Tennessee 4031

Map #1 Sec 1 T24 R8E

CARD..... OF