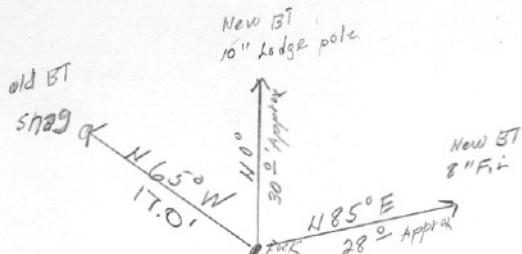


SECTION OR SUBDIVISION 36/31

CORNER No. .... 75 .....

TWP. 2 N ....., RANGE 8 & 9 E, W.M.

CORNER DESCRIPTION



SW Cor 31 2 N 9

SE Cor 36 2 N 8

Large rock with cross

12" above ground

2 original BT's

2 New BT's

Found - A. Hutson 9-27-68

FD. A. HUTSON 6-16-75

ONE B.T.

FD DLF - 9-22-76, Edge of cat  
fire trail, Stone 18" x 17" with  
X on top.

W.O. REF. \_\_\_\_\_

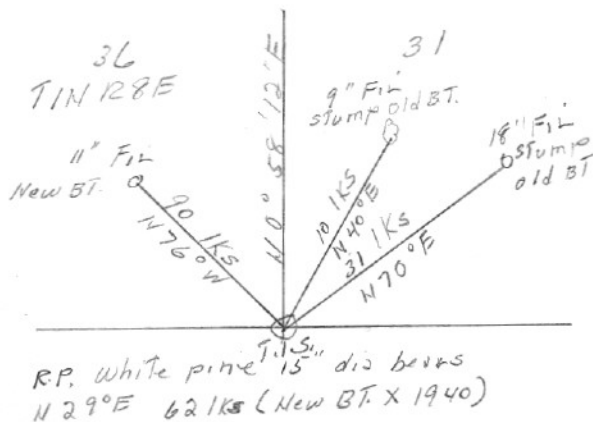
CARD ..... OF .....

SECTION OR SUBDIVISION 31

CORNER No. 90

TWP. 14, RANGE 8+9 E, W.M.

CORNER DESCRIPTION



SW Cor Sec 31  
 fd Brass Disc Stamped  
 610 TIN  
 128E 129E  
 536/531  
 1940

Y = 678,384.64  
 X = 1,678,181.81

W.O. REF.

Tennessee #3737 Cor 257  
 (see sketch on back)

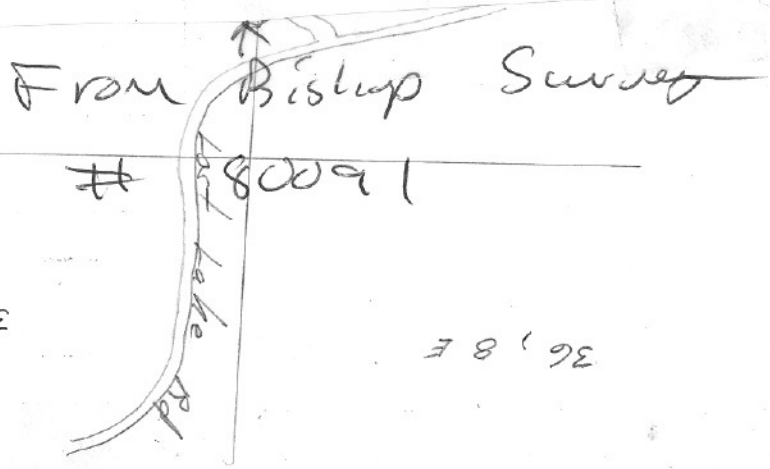
CARD OVER OF

90

15

S.C.  
 TIN  
 536 | 531  
 RBE — R9E

Found  
 Orig. 4" Now Down 18" D-Fir stump N42E 6.6'  
 Orig. 15" Fir N70E 22.6'  
 Both destroyed by road construction  
 MHD.  
 11" Now 18" D-Fir N76W 54.9' Healed Blaze  
 20" wh. Fir N10E 60.4' Scribed TINR9E 531



31 9E

36 8E