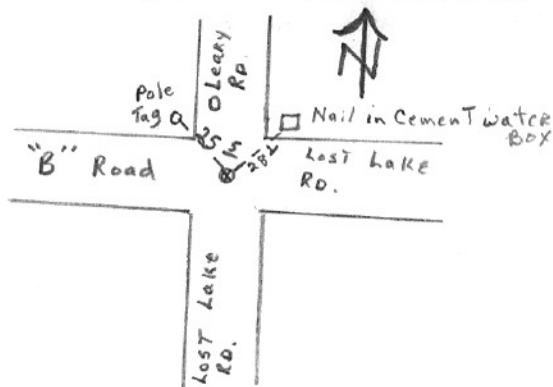


SECTION OR SUBDIVISION 13 N  $\frac{1}{4}$  COR.

CORNER No. #40

TWP. 1 N, RANGE 9 E, W.M.

CORNER DESCRIPTION



N  $\frac{1}{4}$  COR. Sec. 13  
IN 9 E - BRASS CAP  
IN MONUMENT CASE  
IN ROAD BED, SET  
July 9, 1971

W.O. REF. \_\_\_\_\_

CARD 1 OF 1

SECTION OR SUBDIVISION

$\frac{1}{4}$  S  $\frac{12}{13}$

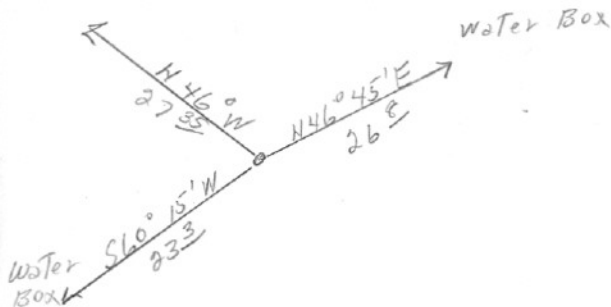
CORNER No. ....

65

TWP. ...., RANGE ..... 9 E, W.M.

CORNER DESCRIPTION

From



2" steel axel in center  
of Road +. Ref var  
21° 30'

W.O. REF. \_\_\_\_\_

CARD.....

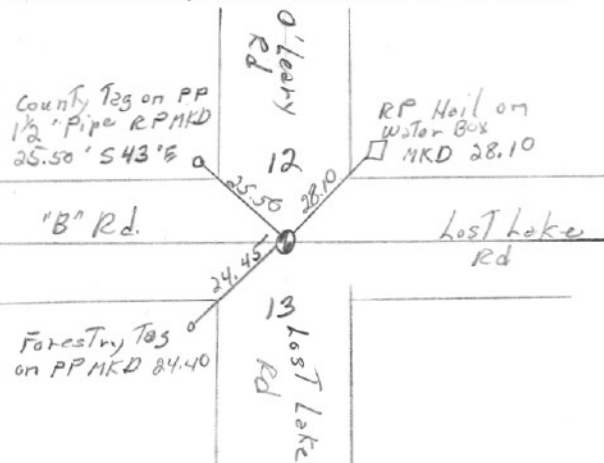
OF .....

SECTION OR SUBDIVISION 12-13

CORNER No. 92

TWP. 1N, RANGE 9 E, W.M.

CORNER DESCRIPTION



N 1/4 Cor Sec 13  
Set Conc Nail

Y - 698, 936.45  
X - 1, 708, 267.41

W.O. REF.

3737 Tennessee - #248

CARD OF