

SECTION OR SUBDIVISION

15

$\frac{15}{22} | \frac{14}{23}$

CORNER No.

30

TWP. 1 N. , RANGE 9 E , W.M.

CORNER DESCRIPTION

$\frac{15}{22} | \frac{14}{23}$ 6" x 6" Cement
Post Marked with Brass
Cap 18" above ground
Photo USP HR 6 Line 7
Photo 6/1/11

Orig.
BT Fir Snag

S 25° E

W.O. REF. _____

CARD 1 OF 1

SECTION OR SUBDIVISION 14-15-22-23

CORNER No. 87

T.P. 1N, RANGE 9 E, W.M.

CORNER DESCRIPTION

SW Cor Sec 14

Fd 6"x6" Conc Post

1/2" High w/brass Disc

Stamped ^{15,14} 22-23

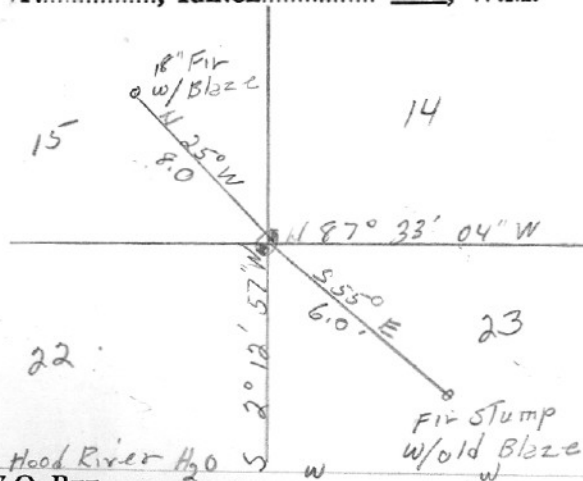
Y - 693,722.58

X - 1,700,619.09

NOTE: SEE Cor. Card.

#30

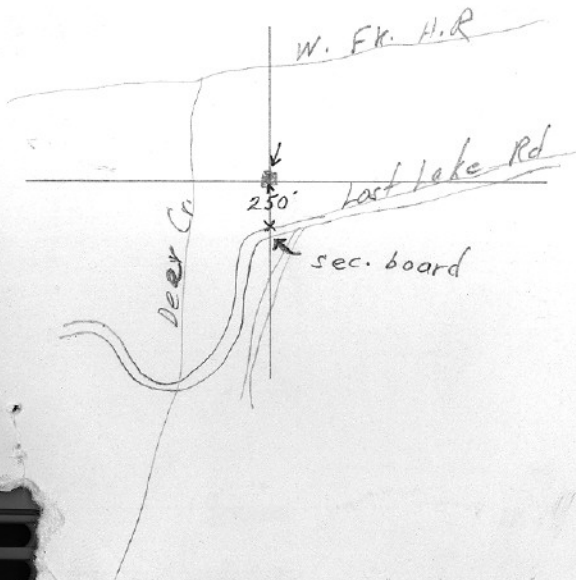
CARD 1 OF 23



W.O. REF.

Tennessee #3737 Cor 254

(see back)



Rock (no marks) +
iron bar 1x1x6"
All B.T.s destroyed by
fire. Cor. was fd.
when B.T.s were standing.
according to V.B.E., 1945

SECTION OR SUBDIVISION

15	14
22	23

CORNER No. 87

TWP. 1N....., RANGE 9E....., W.M.

CORNER DESCRIPTION

CORNER IS 2" IRON BAR

2 FEET ABOVE GROUND.

MONUMENT LOOSE. NO B.T.

APRIL 3, 1976

W.O. REF. RECOVERED BY FORESTRY

CORNER MAY NOT BE CORRECT.

CARD 2 OF 23

SECTION OR SUBDIVISION

12/14
22/23

TWP. 1N RANGE 9E W.M.

SCRIBED 18" DIA.

STUMP

15" DIA. DF

8" DIA.
DF.N50°W
19.0'N16°W
10.9'N16°W
21.6'N35°E
15.3'S60°E
23.5'19" DIA.
D.F.S25°W
10.3'

20" DIA. DF.

W.O. REF. _____

CORNER No. 87

CORNER DESCRIPTION

ON 8/14/87 THE HRC.

SURVEY DEPT. TAGGED &
SCRIBED 4 RTI FOR THE 6"X6"
CONC. PED. ESTAL (24" TALL) 1/4" BRASS
CAP, FROM WHICH:

A 15" DIA. DF BEARS N35°E

A 20" DIA. DF BEARS S60°E

A 19" " " " S25°W

A 8" " " " N50°W

18" OLD SCRIBED STUMP BEARS N16°W

CARD 3 OF 3