

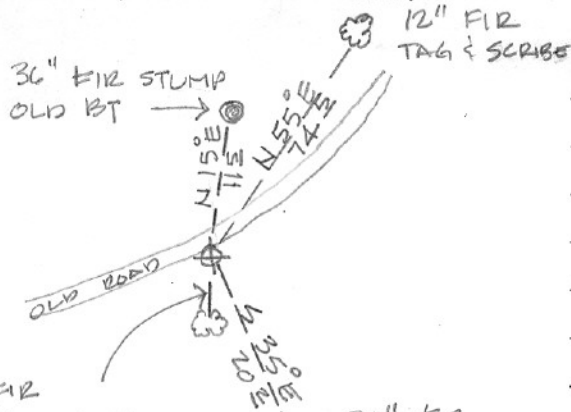
SECTION OR SUBDIVISION

1/4 COR $\frac{17}{20}$

CORNER No. 29

TWP. 15, RANGE 10 E, W.M.

CORNER DESCRIPTION



1/4 CORNER BETWEEN
 SEC. 17 & 20
 SET BRASS CAP IN
 2" IRON PIPE WITH
 CONCRETE
 Cor. good D.D. 6/75

12" FIR
 2' SOUTH OF
 CORNER WITH OLD TAG
 W.O. REF.

20" FIR
 TAG & SCRIBED

29 SEPT 1971

ANTOINE

CARD OF