

SECTION OR SUBDIVISION

1/4 cor

13  
24

CORNER No. ....

~~683~~ 19

TWP. 1N, RANGE 9E, W.M.

CORNER DESCRIPTION

Collins Rd.

cor. is 2" I.P.  
w/brass cap set  
4" below surface.  
Cor was reset from  
information from  
Dee Flat Thinning  
See Back of Card  
No 218

Dirt Rd.

1' 0" DF  
1' 5" S  
1' 4" S  
1' 5" S

5' 3" S  
3' 1/4 S  
1' 1/2 S

20" DF

scribed w/tag  
set nail 1' up  
on W. side

14" DF

scribed w/tag set nail

W.O. REF.

1' up on W side.

21-75

CARD

1 OF 2

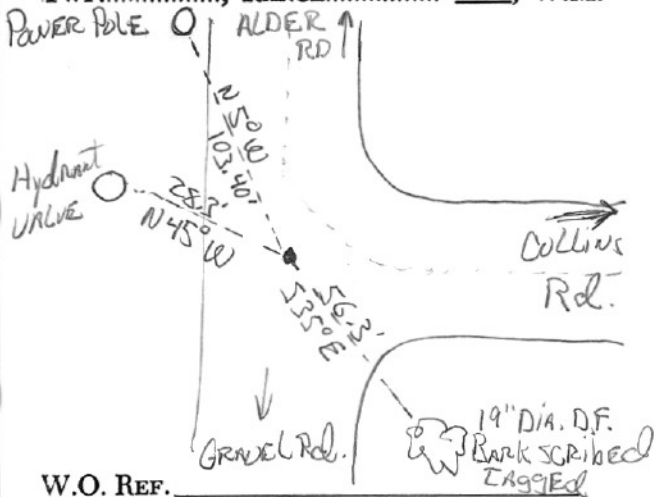
SECTION OR SUBDIVISION

1/4 COR.

CORNER No. 19

TWP. 1N, RANGE 9E, 13/24, W.M.

CORNER DESCRIPTION



W.O. REF.

COR. is the same monument  
 as mentioned on CARD 1.  
 THESE BEARING OBJECTS  
 OBSERVED on 8/14/87

(Both trees on CARD 1 are  
 gone.)

CARD 2 OF 2