

SECTION OR SUBDIVISION 21

17	16
20	21

CORNER No. 4

TWP. 1N, RANGE 11 E, W.M.

CORNER DESCRIPTION

NW Cor 1" IP Lead

Cap ^{17/16} 20/21 12" ht

Set 11-1-67 Dep Surveyor

Rock - 8'x6'x6" mhd.

= W. side ; = S. side

and I. pipe

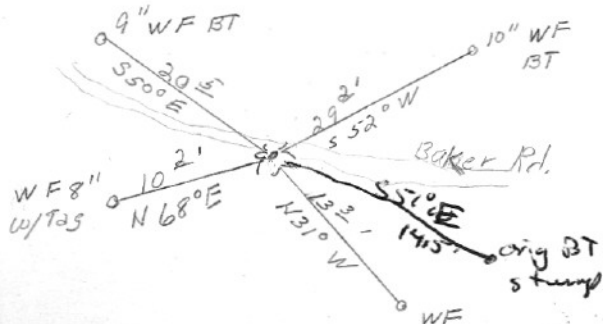
B.T. - 14" D. fir (down)

not readable - S 65° E

15' - by V.R.F. 5-30-44

OVER →

CARD OF



W.O. REF. Sec 28 T1N R11E

(see back)

Line marker on Baker Rd. 15' N. from cor.
Cor. is just outside the road on the S. side
of tract

Found scribing on orig B-T.

S 51° E 14.5' Pipe is in
correct location.

1 1/2" IP. w/ BRASS CAP

Dick Arnold
Feb. 1981