

T 3S R 10E M WILL

	1	2	3	4	5	6	7	8	9	10	11	12	13	14	15	16	17	18	19	20	21	22	23	24	25
A															●	●									●
B	+	+	+		+	+	+		+	+	+		+	+	+		+	+	+		+	+	+		+
C	+	6	+		+	5	+		+	4	+		+	3	+		+	2	+		+	1	+		+
D	+	+	+		+	+	+		+	+	+		+	+	+		+	+	+		+	+	+		+
E																									
F	+	+	+		+	+	+		+	+	+		+	+	+		+	+	+		+	+	+		+
G	+	7	+		+	8	+		+	9	+		+	10	+		+	11	+		+	12	+		+
H	+	+	+		+	+	+		+	+	+		+	+	+		+	+	+		+	+	+		+
J																									
K	+	+	+		+	+	+		+	+	+		+	+	+		+	+	+		+	+	+		+
L	+	18	+		+	17	+		+	16	●		+	15	+		+	14	+		+	13	+		+
M	+	+	+		+	+	+		+	+	+		+	+	+		+	+	+		+	+	+		+
N																									
O	+	+	+		+	+	+		+	+	+		+	+	+		+	+	+		+	+	+		+
P	+	19	+		+	20	+		+	21	+		+	22	+		+	23	+		+	24	+		+
Q	+	+	+		+	+	+		+	+	+		+	+	+		+	+	+		+	+	+		+
R	●																								
S	+	+	+		+	+	+		+	+	+		+	+	+		+	+	+		+	+	+		+
T	+	30	+		+	29	+		+	28	+		+	27	●		+	26	●		+	25	●		+
U	+	+	+		+	+	+		+	+	+		+	+	+		+	+	+		+	+	+		+
V																									
W	+	+	+		+	+	+		+	+	+		+	+	+		+	+	+		+	+	+		+
X	+	31	+		+	32	●		+	33	+		+	34	+		+	35	+		+	36	+		+
Y	+	+	+		+	+	+		+	+	+		+	+	+		+	+	+		+	+	+		+
Z	●																								

SEE T2S, R11E

LEGEND

- PERMANENT MONUMENT
- ⊗ ORIGINAL CORNER RECOVERED
- ⊙ EVIDENCE RECOVERED
- SEARCHED, NOT FOUND

FILING INSTRUCTION

File 7100-52 card record by letter and number coordinates behind the file guide for the township in which it falls.

File the 7100-52 card record by letter and then by number i.e., all A cards first, then B cards etc.

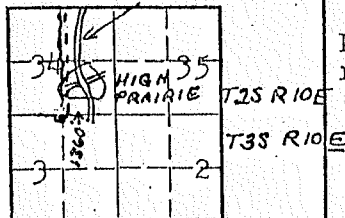
The first card behind the file guide (if data have been obtained and recorded) will be card A-1 for N.W. Township Corner, then card A-2 for 1/16 corner then card A-3 for 1/4 corner etc.

LAND CORNER RECORD

1. T 3S R 10E No. A-15 Cor.  $\frac{1}{4}$  Mer. WM State Oregon (Rectangular) N. F. Mt. Hood Dist. Hoo 1104-B6 A 15

2. Corner Status

Lookout Mtn. Rd.



COMMON TO SECTION 3

7. Photo Identification

Photo No. \_\_\_\_\_

Ident. By: \_\_\_\_\_

8. Plane Coordinate Position Data

State \_\_\_\_\_ Zone \_\_\_\_\_

X \_\_\_\_\_

Y \_\_\_\_\_

Estab. By \_\_\_\_\_

Field Book No. \_\_\_\_\_

Where Filed \_\_\_\_\_

9. Evaluation

Authentic \_\_\_\_\_

Needs Verif. Monument \_\_\_\_\_

Re-estab. Survey \_\_\_\_\_

Land Status \_\_\_\_\_

3. Original Description \_\_\_\_\_ Vol. \_\_\_\_\_ Page \_\_\_\_\_ Where Recorded \_\_\_\_\_

4. Description of Corners: Corner consists of a iron pipe, brass cap in place. Good condition. Dimensins above ground 1x10". Mound of rock is located south.

5. Investigation Notes:

$\frac{1}{4}$
S3
B.T.

Species Hemlock  
 Diameter 10"  
 Bearing S55°E  
 Distance 35'

Believed to be a genuine Land Office Corner. Metal Location Poster is on a Fir tree 30" diameter on the West side of Lookout Mt. Road from which this Corner bears West 1280'. This line crosses Lookout Mt. Road approximately 100' after leaving High Prairie.

6. Signed Van B. Embree Title \_\_\_\_\_ Date July 18, 1957

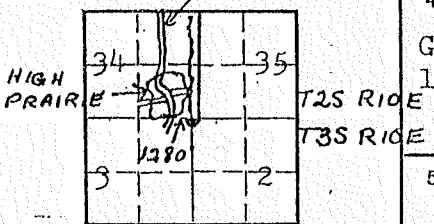
$\frac{1}{4}$  S3  
T3S

LAND CORNER RECORD

A 17

1. T. 3S R. 10E No. A17 Cor. Sec. WM Mer. Oregon State Oregon N. F. Mt. Hood Dist. H1104-B6

2. Corner Status  
 Lookout Mt. Rd.



COMMON TO SECS. 2 & 3

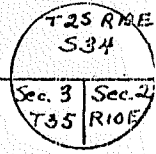
7. Photo Identification  
 Photo No. \_\_\_\_\_  
 Ident. By: \_\_\_\_\_

8. Plane Coordinate Position Data  
 State \_\_\_\_\_ Zone \_\_\_\_\_  
 X \_\_\_\_\_  
 Y \_\_\_\_\_  
 Estab. By \_\_\_\_\_  
 Field Book No. \_\_\_\_\_  
 Where Filed \_\_\_\_\_

9. Evaluation  
 Authentic \_\_\_\_\_  
 Needs Verif. \_\_\_\_\_ Monument \_\_\_\_\_  
 Re-estab. \_\_\_\_\_ Survey \_\_\_\_\_  
 Land Status \_\_\_\_\_

3. Original Description \_\_\_\_\_ Vol. \_\_\_\_\_ Page \_\_\_\_\_ Where Recorded \_\_\_\_\_

4. Description of Corners: Corner consists of a iron pipe, brass cap in place Good condition. Dimensions above ground  $1\frac{1}{2} \times 12$ ". Mound of rock is located South.



5. Investigation Notes:

T3S	T3S
R10E	R10E
S3	S2
B.T.	B.T.

Species	Hemlock	Hemlock
Diameter	18"	36"
Bearing	S23°W	S15°E
Distance	16'	14'

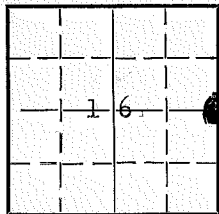
Believed to be a genuine Land Office Corner. Metal Location Post is on a Fir tree 30" diameter on the West side of Lookout Mt. Rd. from which this Corner bears East, 1280'. This line crosses the Lookout Mt. Road approximately 100' after leaving High Prairie.

6. Signed Van B. Embree Title \_\_\_\_\_ Date Jul, 1957

**REPORTED** MISCELLANEOUS CORNER

1. T 3S R 10E No. L 13 Cor. E 1/4 Mer. Will State Oregon N. P. W. Hood Dist. Barlow

2. Corner Status



3. Original Description \_\_\_\_\_ Vol. \_\_\_\_\_ Page \_\_\_\_\_ Where Recorded \_\_\_\_\_

4. Description of Corners: Cor set in 1938. North bet. Secs. 15 & 16 at 40 chs set an iron post 3' long 1" diam., 27" in gr., for 1/4 sec cor w/brass cap mkd. 1/4 from which a Douglas-fir 25" bears N69E, 68 lks. S16/S15 mkd. 1/4 S15 Bt. a DF 30" bears S29W, 34 lks. mkd. 1938 1/4 S16 Bt.

5. Investigation Notes:

Corner is pipe w/cap in mound of rock. Height above ground 12".  
3/4" pipe w/2 1/2" cap in mound of rock. Very good condition.

DF 30" N70E, 45'. Grown over.  
No other BT found.

7. Photo Identification

Photo No. \_\_\_\_\_

Ident. By: \_\_\_\_\_

8. Plane Coordinate Position Data

State \_\_\_\_\_ Zone \_\_\_\_\_

X \_\_\_\_\_

Y \_\_\_\_\_

Estab. By \_\_\_\_\_

Field Book No. \_\_\_\_\_

Where Filed \_\_\_\_\_

9. Evaluation

Authentic \_\_\_\_\_

Needs Verif. \_\_\_\_\_ Monument \_\_\_\_\_

Re-estab. \_\_\_\_\_ Survey \_\_\_\_\_

Land Status \_\_\_\_\_

6. Signed C.H. Goodwin Title Eng. Aide Date 9-14-67  
C.E. Tech.

PERPETUATION RECORD

10. Monument:

11. Accessories

			Field Book _____	Page _____
12. Set By _____	Title _____			
License _____	Agency _____	Date _____	13. Recorded By _____	Volume _____
			(Agency)	Page _____
			(Date) _____	(City) _____
			(County) _____	(State) _____

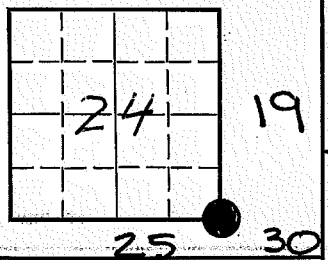
14. Remarks:

LAND CORNER RECORD

CONTROL CORNER

1. T 3 S R 10 E No. R 25 Cor. Sec Mer. Will State Oregon N. F. Mt. Hood Dist. Barlow

2. Corner Status



3. Original Description \_\_\_\_\_ Vol. \_\_\_\_\_ Page \_\_\_\_\_ Where Recorded \_\_\_\_\_

4. Description of Corners: Ind. Resurvey superseding survey of 1884. Set an iron post 3" x 2" x 22" in ground to bedrock, and in a mound of stone to top, for cor of Secs 19, 24, 25 & 30, w/brass cap; from which a DF 6" bears N79E 27 lks. Mkd T3S R10E S19 BT. A DF 29" bears S74E 97 lks. Mkd T3S R10E S30 BT. A DF 30" bears S76W. Mkd T3S R9E S25 BT. A DF 25" bears N63W 132 lks. Mkd T3S R9E S24 BT. Destroyed all evidence of old corner. Marked: T3S

5. Investigation Notes

R9E	R10E
S24	S19
S25	S30
1938	

7. Photo Identification

Photo No. \_\_\_\_\_  
Ident. By: \_\_\_\_\_

8. Plane Coordinate Position Data

State \_\_\_\_\_ Zone \_\_\_\_\_  
X \_\_\_\_\_  
Y \_\_\_\_\_

Estab. By \_\_\_\_\_

Field Book No. \_\_\_\_\_

Where Filed \_\_\_\_\_

9. Evaluation

Authentic \_\_\_\_\_  
Needs Verif. \_\_\_\_\_ Monument yes  
Re-estab. \_\_\_\_\_ Survey \_\_\_\_\_  
Land Status \_\_\_\_\_

5. Investigation Notes:

Corner is 2" iron pipe, above ground 1', in good condition. Markings, U.S. General Land Office 1938 as above. DF 12" N74E 18' T3S R10E S19 BT. Did not look for other BT's tied in for road location.

6. Signed C. Goodwin Title Survey Tech. Date 8-17-66

# PERPETUATION RECORD

10. Monument:

11. Accessories

		Field Book	Page
12. Set By	Title	13. Recorded By	Volume
License	Agency	(Agency)	Page
Date		(Date)	(City)
		(County)	(State)

14. Remarks:

Index \_\_\_\_\_

File No. R 17

**CORNER RECORD (SEARCH)**

(Ref. FSM 7151.4)

Tract or  
Survey No. \_\_\_\_\_

Cor.  
No. \_\_\_\_\_

R 17  
1401-D4

T 3 S R. 10 E

R.D. Barlow

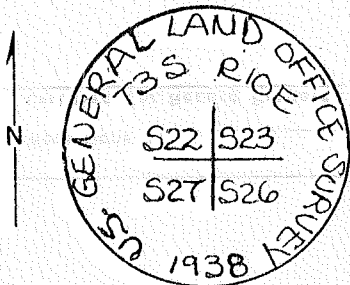
County Wasco

Merid. Willamette

S.F. Mt. Hood

State Oregon

**CORNER DIAGRAM**



**DESCRIBE CORNER MONUMENT FOUND**

Brass cap 12" above the ground in good condition

T3S R10E

S22 S23

S27n S26

1938

2

**DESCRIBE BEARING TREES OR OTHER OFFICIAL ACCESSORIES FOUND**

S 23 Grand Fir Snag Blown over 18.0" DBH N 51 E 65 Links  
 S 26 Douglas-fir snag on the ground about 6" DBH S61 E 95 Links  
 S 27 Douglas-fir 41.8" DBH S 30 W 48 Links  
 S22 No evidence found of BT

All found BT's posted with 54-3 signs

54-4 posted on DF 13.8" bears S48W about 14.5' from corner.

**PHOTO IDENTIFICATION DATA**

Photo No. \_\_\_\_\_

Filed At. \_\_\_\_\_

Object Ident. \_\_\_\_\_

Ident. By \_\_\_\_\_

*Signature*

6

**DESCRIBE CORNER LOCATION RELATIVE TO NEAR-BY FEATURES, ALSO HOW TO REACH CORNER**

Located in the corner on the south edge of a small opening  
 on 45% slope

**PLANE COORDINATE POSITION DATA**

State \_\_\_\_\_ Zone \_\_\_\_\_

X \_\_\_\_\_

Y \_\_\_\_\_

Estab. By \_\_\_\_\_

*Agency*

8

Signature

Title

Division

Headquarters

Date

7100-52 (3/68)

Dave Gross & Denise Zemer Foresters Barlow District

6/16/79

*DNB*

5

4



# CORNER RECORD (PERPETUATION)

MONUMENT: DESCRIBE NEW MONUMENT SET, OR WORK DONE TO PRESERVE EXISTING MONUMENT

ACCESSORIES : DESCRIBE NEW BT'S WITNESS OBJECTS ETC. ESTABLISHED, OR WORK DONE TO PRESERVE EXISTING EVIDENCE

Work Done By \_\_\_\_\_

Title \_\_\_\_\_

Date \_\_\_\_\_

State Registration No.  
or Agency \_\_\_\_\_

Certified Cor. Record Prepared ? Yes  No

Filed At: \_\_\_\_\_

Date \_\_\_\_\_

## REMARKS

Index File No. \_\_\_\_\_

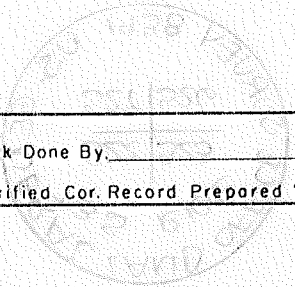
T. \_\_\_\_\_

R. \_\_\_\_\_

M. \_\_\_\_\_

Tract or Surv. No. \_\_\_\_\_

Cor. \_\_\_\_\_



Index

File No. T 17

CORNER RECORD (SEARCH)

(Ref. FSM 7151.4)

Tract or

Survey No.

Cor.

No.

T 17

1503-02

T 3 S R 10 E

R.D. BARLOW

County

WASCO

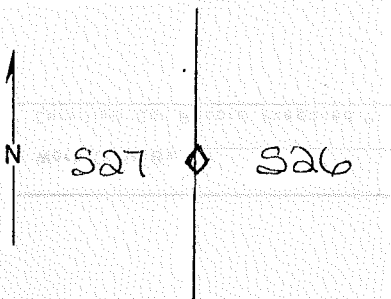
Merid. WILLAMETTE

N.F. MT. HOOD

State

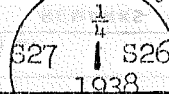
OREGON

CORNER DIAGRAM



DESCRIBE CORNER MONUMENT FOUND

Brass Cap 19" above the ground in good condition  
Pipe surrounded by a pile of rock



DESCRIBE BEARING TREES OR OTHER OFFICIAL ACCESSORIES FOUND

S26 Douglas-fir 26.7" DBH N 30 E 70 Links  
S27 Douglas-fir 40.6" DBH S 86 W 64 Links

ALL BT'S Posted with 54-3 Signs  
54-4 posted on DF 36.9" bears app. S48E, 11.5' from cor.

PHOTO IDENTIFICATION DATA

Photo No. \_\_\_\_\_

Filed At. \_\_\_\_\_

Object Ident. \_\_\_\_\_

Ident. By \_\_\_\_\_

Signature

PLANE COORDINATE POSITION DATA

State \_\_\_\_\_ Zone \_\_\_\_\_

X \_\_\_\_\_

Y \_\_\_\_\_

Estab. By \_\_\_\_\_

Agency

DESCRIBE CORNER LOCATION RELATIVE TO NEAR-BY FEATURES, ALSO HOW TO REACH CORNER

See notes on page 57 in T & R 310

Signature

Title

Division

Headquarters

Date

Dave Gross & Denise Zemer Foresters

Barlow District

6/16/79

7100-52 (3/68)

DMP

CORNER RECORD (PERPETUATION)

MONUMENT: DESCRIBE NEW MONUMENT SET, OR WORK DONE TO PRESERVE EXISTING MONUMENT

ACCESSORIES : DESCRIBE NEW BT'S WITNESS OBJECTS ETC. ESTABLISHED, OR WORK DONE TO PRESERVE EXISTING EVIDENCE

Work Done By: \_\_\_\_\_ Title \_\_\_\_\_ Date \_\_\_\_\_ State Registration No. or Agency \_\_\_\_\_  
Certified Cor. Record Prepared ? Yes No Filed At: \_\_\_\_\_ Date \_\_\_\_\_

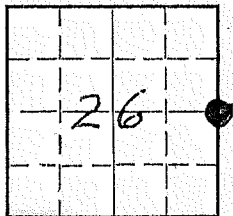
REMARKS

Index File No. \_\_\_\_\_ T. \_\_\_\_\_ R. \_\_\_\_\_ M. \_\_\_\_\_ Tract or Surv. No. \_\_\_\_\_ Cor. \_\_\_\_\_

LAND CORNER RECORD

1. T 3 S R 10E No. T 21 Cor. E 1/4 Mer. Will State Oregon (Rectangular) E. F. Mt. Hood Dist. T 21  
1503=D2

2. Corner Status



7. Photo Identification

Photo No. \_\_\_\_\_

Ident. By: \_\_\_\_\_

8. Plane Coordinate Position Data

State \_\_\_\_\_ Zone \_\_\_\_\_

X \_\_\_\_\_

Y \_\_\_\_\_

Estab. By \_\_\_\_\_

Field Book No. \_\_\_\_\_

Where Filed \_\_\_\_\_

9. Evaluation

Authentic

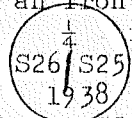
Needs Verif. \_\_\_\_\_ Monument yes

Re-estab. \_\_\_\_\_ Survey \_\_\_\_\_

Land Status \_\_\_\_\_

3. Original Description \_\_\_\_\_ Vol. \_\_\_\_\_ Page \_\_\_\_\_ Where Recorded \_\_\_\_\_

4. Description of Corners: Set an iron post 3'x1", 27" in ground, for  $\frac{1}{4}$  Sec for with brass cap mkd  $\frac{1}{4}$  from which a MH 12" bears S12E 30 lks



mkd  $\frac{1}{4}$ S25BT. A WP 12" bears S59W, 51 lks. Mkd  $\frac{1}{4}$ S26BT.

5. Investigation Notes:

Corner is 3/4" pipe w/cap, above ground 14", very good condition.

Markings: Gen Land Office Survey as above.

MH 16" S10E 18.5' somescribing visible. WP 13" S58W 32' grown over. On ridge top North of Three Mile trail.

Visited in 1979 by Dale Bowdish: Brasscap in good cond. 1' above ground from which a 18" M Hem bears S 12 E, 18.8' and White Pine 14" bears S 59 W, 31.4'.

Refer to Page 48 in T & R notes 310

6. Signed E.E. Carpenter Title Forestry Tech Date 7-25-66

# PERPETUATION RECORD

## 10. Monument:

MONUMENT NO. \_\_\_\_\_  
SECTION \_\_\_\_\_  
TOWNSHIP \_\_\_\_\_  
COUNTY \_\_\_\_\_

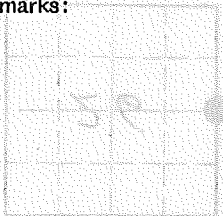
## 11. Accessories

DESCRIPTION \_\_\_\_\_  
DATE \_\_\_\_\_  
BY \_\_\_\_\_

12. Set By \_\_\_\_\_ Title \_\_\_\_\_  
License \_\_\_\_\_ Agency \_\_\_\_\_ Date \_\_\_\_\_

Field Book \_\_\_\_\_ Page \_\_\_\_\_  
13. Recorded By \_\_\_\_\_ Volume \_\_\_\_\_ Page \_\_\_\_\_  
(Agency)  
(Date) (City) (County) (State)

## 14. Remarks:



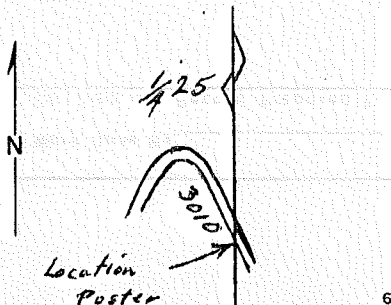
Index  
File No. T 25

**CORNER RECORD (SEARCH)**  
(Ref. FSM 7151.4)

Tract or  
Survey No. \_\_\_\_\_ Cor. No. T 25  
1502-A2

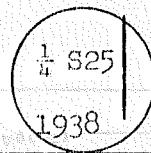
T 3 S R. 10 E R.D. Barlow County Wasco -Hood River  
Merid. Willamette N.F. Mt. Hood State Oregon

**CORNER DIAGRAM**



**DESCRIBE CORNER MONUMENT FOUND**

Brass Cap Good condition  
6" above ground.



**DESCRIBE BEARING TREES OR OTHER OFFICIAL ACCESSORIES FOUND**

White Pine S 60 W 63' 40.3" DBH Green  
White Fir N 46 W 10.1' 23.2" DBH Green

Both grown over  
Posted BT's

**PHOTO IDENTIFICATION DATA**

Photo No. \_\_\_\_\_  
Filed At. \_\_\_\_\_  
Object Ident. \_\_\_\_\_  
Ident. By \_\_\_\_\_  
*Signature*

**DESCRIBE CORNER LOCATION RELATIVE TO NEAR-BY FEATURES, ALSO HOW TO REACH CORNER**

About 200' NNE of corner of road 3010  
Refer to T & R 310 notes on Page 17.

**PLANE COORDINATE POSITION DATA**

State \_\_\_\_\_ Zone \_\_\_\_\_  
X \_\_\_\_\_  
Y \_\_\_\_\_  
Estab. By \_\_\_\_\_  
*Agency*

*Signature*  
*Sub M Bowdler*

Title Forester Division Barlow district Headquarters \_\_\_\_\_ Date 8/9/79 7100-52 (3/68)

CORNER RECORD (PERPETUATION)

MONUMENT : DESCRIBE NEW MONUMENT SET, OR WORK DONE TO PRESERVE EXISTING MONUMENT

ACCESSORIES : DESCRIBE NEW BT'S WITNESS OBJECTS ETC. ESTABLISHED, OR WORK DONE TO PRESERVE EXISTING EVIDENCE

Work Done By \_\_\_\_\_ Title \_\_\_\_\_ Date \_\_\_\_\_ State Registration No. \_\_\_\_\_ or Agency \_\_\_\_\_

Certified Cor. Record Prepared ? Yes No Filed At: \_\_\_\_\_ Date \_\_\_\_\_

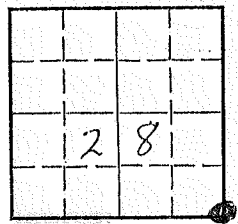
REMARKS

Index File No. T. R. M. Tract or Surv. No. Cor.

LAND CORNER RECORD

T 3S R 10E No. V13 Cor. Sec. Mer. WM State Oregon (Rectangular) N. F. Mt. Hood Dist. Ba V 13  
1601-02

2. Corner Status \_\_\_\_\_



3. Original Description \_\_\_\_\_ Vol. \_\_\_\_\_ Page \_\_\_\_\_ Where Recorded \_\_\_\_\_

4. Description of Corners: Iron post 3' long, 2" in dia. 27" inground for cor. of sec. 27, 28, 33, & 34 w/ brass cap marked: T3S R10E from which a Mt. Hemlock 20" dia. brs. N52°E, 36 lks. T3S, R10E, S27 S28 S27 BT; a noble fir 12" dia. brs. S66°E, 11 lks. T3S, R10E, S34 BT; a Mt. H. 1 1/2" dia. brs. S30°W 26 lks. T3S, R10E, S33 BT; a Mt. H. 1 1/2" dia. brs. S30°W 5 lks. T3S, R10E, S28 BT; raised mound of stone 3' base 3' high, of cor. 1938

7. Photo Identification

Photo No. \_\_\_\_\_

Ident. By: \_\_\_\_\_

8. Plane Coordinate Position Data

State \_\_\_\_\_ Zone \_\_\_\_\_

X \_\_\_\_\_

Y \_\_\_\_\_

Estab. By \_\_\_\_\_

Field Book No. \_\_\_\_\_

Where Filed \_\_\_\_\_

9. Evaluation

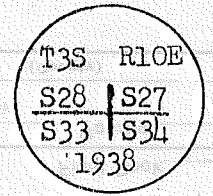
Authentic X

Needs Verif. \_\_\_\_\_ Monument Yes

Re-estab. \_\_\_\_\_ Survey Git.

Land Status \_\_\_\_\_

5. Investigation Notes: Corner is 1 1/2" pipe w/ 2" brass cap in pile of rock. 18" above ground. Marked MH 22" N54E 20', +3S, R10E, S27, BT MH 20" S59E 25' Grown over MH 11" S30W 15', +3S, R10E, S33 BT. Put Form 54-3 on NE & SW BTs. and Form 54-6 on NE BT. Board 50' W of cor. on RD: S339.



Refer to T & R 310 Notes on page 65.

6. Signed E.E. Carpenter Title Forestry Tech. Date 9/15/64



PERPETUATION RECORD

10. Monument:

WOMAN'S YES

YES

YES

11. Accessories

YES

YES

YES

12. Set By \_\_\_\_\_ Title \_\_\_\_\_

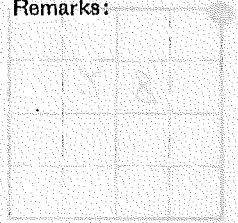
License \_\_\_\_\_ Agency \_\_\_\_\_ Date \_\_\_\_\_

13. Recorded By \_\_\_\_\_ Volume \_\_\_\_\_ Page \_\_\_\_\_

(Agency)

(Date) (City) (County) (State)

14. Remarks:



Field Book \_\_\_\_\_ Page \_\_\_\_\_

Volume \_\_\_\_\_ Page \_\_\_\_\_

Index File No. V 17  
 T 3 S 10 E.  
 Merid. Willamette

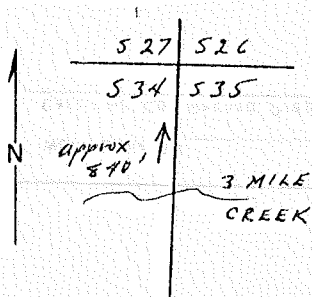
**CORNER RECORD (SEARCH)**

(Ref. FSM 7151.4)

R.D. Barlow County Wasco  
 N.F. Mt. Hood State Oregon

Tract or Survey No. \_\_\_\_\_  
 Cor. No. V 17  
1503-02

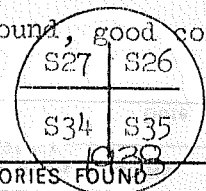
**CORNER DIAGRAM**



**DESCRIBE CORNER MONUMENT FOUND**

Brass Cap on pipe 10 1/2" above the ground, good condition

Rock carin adjacent to pipe



**DESCRIBE BEARING TREES OR OTHER OFFICIAL ACCESSORIES FOUND**

- S 26 Noble fir 16.5" DBH bears S 87 W 74 Links
- S 35 Mt. Hemlock 19.4" DBH bears N 66 1/2 E 69 Links
- S 34 Noble fir 15.7" DBH bears N 57 1/2 E 49 Links
- S 27 Western Larch 30.6" DBH bears S 56 E 87 links
- All BT's Posted with Form 54-3

54-4 posted on 18" PSF due South of cor about 15'.

**PHOTO IDENTIFICATION DATA**

Photo No. \_\_\_\_\_  
 Filed At. \_\_\_\_\_  
 Object Ident. \_\_\_\_\_  
 Ident. By \_\_\_\_\_  
*Signature*

**DESCRIBE CORNER LOCATION RELATIVE TO NEAR-BY FEATURES, ALSO HOW TO REACH CORNER**

Corner is located about 840 feet north of Three Mile Creek  
 Blazed lines in E-W & N-S directions

**PLANE COORDINATE POSITION DATA**

State \_\_\_\_\_ Zone \_\_\_\_\_  
 X \_\_\_\_\_  
 Y \_\_\_\_\_  
 Estab. By \_\_\_\_\_  
*Agency*

Refer to T & R 310 Notes on page 56.

Signature Dave Gross & Denise Zemer Title Foresters Division Barlow District Headquarters \_\_\_\_\_ Date 6/29/79  
 7100-52 (3/68)

*DMB*

CORNER RECORD (PERPETUATION)

100-25 10 98

MONUMENT : DESCRIBE NEW MONUMENT SET, OR WORK DONE TO PRESERVE EXISTING MONUMENT

ACCESSORIES : DESCRIBE NEW BT'S WITNESS OBJECTS ETC. ESTABLISHED, OR WORK DONE TO PRESERVE EXISTING EVIDENCE

Work Done By \_\_\_\_\_ Title \_\_\_\_\_ Date \_\_\_\_\_ State Registration No. \_\_\_\_\_  
 or Agency \_\_\_\_\_  
 Certified Cor. Record Prepared ? Yes No Filed At: \_\_\_\_\_ Date \_\_\_\_\_

REMARKS

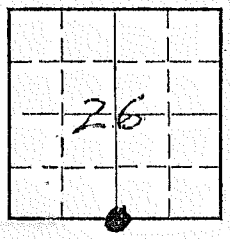
Index File No. \_\_\_\_\_ T. \_\_\_\_\_ R. \_\_\_\_\_ M. \_\_\_\_\_ Tract or Surv. No. \_\_\_\_\_ Cor. \_\_\_\_\_

LAND CORNER RECORD

V 19

1. T 38 R 10E No. V 19 Cor. S 1/4 Mer. Will State Oregon (Rectangular) N. F. Mt. Hood Dist. Ba 1503-02

2. Corner Status



7. Photo Identification

Photo No. \_\_\_\_\_  
Ident. By: \_\_\_\_\_

8. Plane Coordinate Position Data

State \_\_\_\_\_ Zone \_\_\_\_\_  
X \_\_\_\_\_  
Y \_\_\_\_\_  
Estab. By \_\_\_\_\_  
Field Book No. \_\_\_\_\_  
Where Filed \_\_\_\_\_

9. Evaluation

Authentic   
Needs Verif. \_\_\_\_\_ Monument yes  
Re-estab. \_\_\_\_\_ Survey \_\_\_\_\_  
Land Status \_\_\_\_\_

3. Original Description \_\_\_\_\_ Vol. \_\_\_\_\_ Page \_\_\_\_\_ Where Recorded \_\_\_\_\_

4. Description of Corners: Set an iron post, 3'x1", 18" in ground to bedrock, and in a mound of stone to top, for 1/4 Sec. cor. with brass cap mkd. 1/4 S 26 from which a DF 28" bears N17W, 63 lks. mkd. 1/4 S26 BT. A 1/4 S 35 WF 30" bears S40W, 61 lks. mkd. 1/4 S35 BT. 1938

5. Investigation Notes: Pipe w/ cap, 3/4" pipe, 16" above ground, in mound of rock. Marked: 1/4 S 26  
S 35  
1938  
WF 34" S40W 40' grown over.  
DF 30" N17W 42' grown over.

8/6/79 notes (Dale Bowdish-Forester): Brasscap has been damaged by logging with the pipe bent over and 19" above ground. No evidence of BT's as described in notes—No DF or WF in area, no BT tags—possible BT 31' bears S23W, 13' true fir & 22' true fir bears N33W, 18'—blaze on base.

Refer to T & R 310 notes on page 56.

6. Signed E.E. Carpenter Title Forestry Tech. Date 8-3-66

# PERPETUATION RECORD

10. Monument:

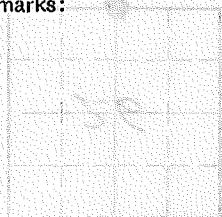
MONUMENT

11. Accessories:

12. Set By \_\_\_\_\_ Title \_\_\_\_\_  
License \_\_\_\_\_ Agency \_\_\_\_\_ Date \_\_\_\_\_

Field Book \_\_\_\_\_ Page \_\_\_\_\_  
13. Recorded By \_\_\_\_\_ Volume \_\_\_\_\_ Page \_\_\_\_\_  
(Agency)  
(Date) (City) (County) (State)

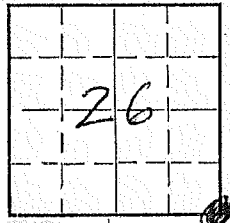
14. Remarks:



LAND CORNER RECORD

1. T 3S R 10E No. V21 Cor. Sec. Mer. Will. State Oregon (Rectangular) N. F. Mt. Hood Dist. V 21  
1503-D2

2. Corner Status



7. Photo Identification

Photo No. \_\_\_\_\_  
 Ident. By: \_\_\_\_\_

8. Plane Coordinate Position Data

State \_\_\_\_\_ Zone \_\_\_\_\_  
 X \_\_\_\_\_  
 Y \_\_\_\_\_  
 Estab. By \_\_\_\_\_  
 Field Book No. \_\_\_\_\_  
 Where Filed \_\_\_\_\_

9. Evaluation

Authentic   
 Needs Verif. \_\_\_\_\_ Monument yes  
 Re-estab. \_\_\_\_\_ Survey \_\_\_\_\_  
 Land Status \_\_\_\_\_

3. Original Description \_\_\_\_\_ Vol. \_\_\_\_\_ Page \_\_\_\_\_ Where Recorded \_\_\_\_\_

4. Description of Corners: Set an iron post 3"x2" 12" in ground to bedrock and in a mound of stone to top for cor. of Secs 25, 26, 35 & 36 w/ brass cap mkd T3S R10E from which a DF 30" bears N65E 98 lks mkd T3S R10E S25BT. A WP 20" bears S20E 61 lks mkd T3S R10E S35BT. A PP 40" bears S69W 24 lks mkd T3S R10E S25BT. A DF 48" bears N73W 91 lks mkd T3S R10E S26BT.

5. Investigation Notes:

Corner is 1 1/2" pipe w/cap, above ground 24" with rock mound, in good condition, markings Gen Land Office Survey as above. DF sn 30" N42E 65.3' marked T3S R10E S25BT. WP 22" S9E 39.8' grown over. PP 40" S78W 15.5' mkd T3S R10E S25BT. Form 54-3 put on all BT'S, 54-6 on 6" NF S44W 11' from cor. Post Camp Tr (#467) is approx 2 1/2' chs S of cor.

8/6/79 notes (Dale Bowdish-Forester): Brasscap in good cond & 1 1/2' above ground. DF bears N42E, 65.3', broke off stump, Sec 25 scribing; WP dead snag bears S9E, 39.8' overgrown; PP bears S78W, 15.5', 42" DBH, scribing; and DF 54" bears N73W, 57', overgrown.

Photo Symbol/Date: L30017-9/14/72 Roll 7 Exposure 10  
 Filed in Planning.

Refer to T & R 310 notes on page 46.

6. Signed E.L. Carpenter Title Forester, Tech Date 6-25-66

PERPETUATION RECORD

10. Monument:

NAME: \_\_\_\_\_

ADDRESS: \_\_\_\_\_

CITY: \_\_\_\_\_

STATE: \_\_\_\_\_

ZIP: \_\_\_\_\_

11. Accessories:

DESCRIPTION: \_\_\_\_\_

DATE: \_\_\_\_\_

BY: \_\_\_\_\_

AGENCY: \_\_\_\_\_

12. Set By \_\_\_\_\_ Title \_\_\_\_\_

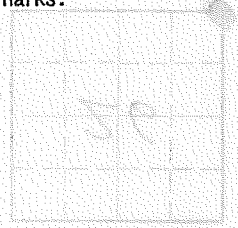
License \_\_\_\_\_ Agency \_\_\_\_\_ Date \_\_\_\_\_

13. Recorded By \_\_\_\_\_ Volume \_\_\_\_\_ Page \_\_\_\_\_

(Agency)

(Date) (City) (County) (State)

14. Remarks:

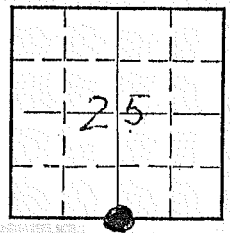


LAND CORNER RECORD

V 23

1. T. 3 S R. 10 E No. V 23 Cor. S 1 Mer. Will State Oregon (Rectangular) N. F. Mt. Hood Dist. Ba: 1503-D2

2. Corner Status



7. Photo Identification

Photo No. \_\_\_\_\_

Ident. By: \_\_\_\_\_

8. Plane Coordinate Position Data

State \_\_\_\_\_ Zone \_\_\_\_\_

X \_\_\_\_\_

Y \_\_\_\_\_

Estab. By \_\_\_\_\_

Field Book No. \_\_\_\_\_

Where Filed \_\_\_\_\_

9. Evaluation

Authentic.

Needs Verif. \_\_\_\_\_ Monument yes

Re-estab. \_\_\_\_\_ Survey \_\_\_\_\_

Land Status \_\_\_\_\_

3. Original Description \_\_\_\_\_ Vol. \_\_\_\_\_ Page \_\_\_\_\_ Where Recorded \_\_\_\_\_

4. Description of Corners: Set an iron post 3'x1", 18" in ground to bedrock, and in a mound of stone to top, for  $\frac{1}{4}$  Sec. cor. with brass cap mkd.  $\frac{1}{4}$  S 25 from which a DF 28" bears N17W, 63 lks. mkd.  $\frac{1}{4}$  S25 BT. A S 36 WF 30" bears S40W, 61 lks, mkd.  $\frac{1}{4}$  S36 BT. 1938

5. Investigation Notes: Pipe w/cap, 1", above ground 14", very good condition, marked: S 25 C.L.O.S.



In mound of stone. 1938  
DF 34" N17W 41 $\frac{1}{2}$ '. Grown over WF 34" S40W'. Some scribing visible. Form 54-3 on BT's. Form 54-5 on Johns Mill Tr. (Now Post Camp Tr. #467)

8/6/79 notes (Dale Bowdish- Forester): 36" GF, S40W, 80' 36" DF, N17W, 41 $\frac{1}{2}$ '.  
Spur road 150' East.  
Photo Symbol/Date: L30017/9-14-72, Roll 8, Expos. 9  
Filed in Sale Planning.

Refer to T & R 310 notes on page 47.

6. Signed C.E. Carpenter Title Forestry Tech. Date 8-3-66



# PERPETUATION RECORD

## 10. Monument:

PROVINCE: CANADA  
COUNTY: ALBERTA  
MUNICIPALITY: *St. Mary*  
SECTION: *1*

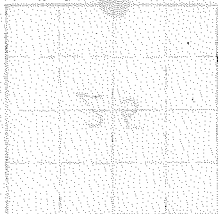
## 11. Accessories

LAND WORK LOG:  
DATE: \_\_\_\_\_  
BY: \_\_\_\_\_  
OTHER: \_\_\_\_\_

12. Set By \_\_\_\_\_ Title \_\_\_\_\_  
License \_\_\_\_\_ Agency \_\_\_\_\_ Date \_\_\_\_\_

Field Book \_\_\_\_\_ Page \_\_\_\_\_  
13. Recorded By \_\_\_\_\_ Volume \_\_\_\_\_ Page \_\_\_\_\_  
(Agency)  
(Date) (City) (County) (State)

## 14. Remarks:

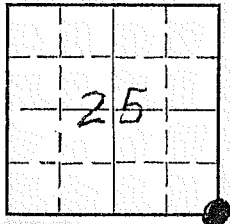


# LAND CORNER RECORD

(Rectangular)

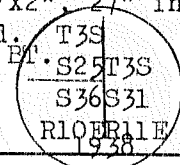
1. T3S R10E No. V 25 Cor. Sec. Mer. Will State Oregon N. F. Mt. Hood Dist. V 25  
1502-A2

2. Corner Status

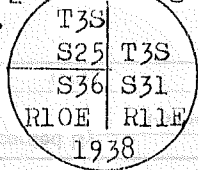


3. Original Description \_\_\_\_\_ Vol. \_\_\_\_\_ Page \_\_\_\_\_ Where Recorded \_\_\_\_\_

4. Description of Corners: Set an iron post 3'x2", 27" in ground for Cor. Secs. 25 & 36 only with brass cap mkd. T3S from which a WF 13" bears S37W 27 lks. mkd. T3S R10E S36 BT. S25 T3S A WF 18" bears N28W, 79 lks. mkd. T3S R10E S25 BT. S36 S31 Raised mound of stone 3' base, 2 1/2' high W. of cor.



5. Investigation Notes: Pipe w/cap, 1/2" above ground 8", very good condition. Mound of stone on W side.



WF 17" S38W 18' grown over. Sec cor to 30 & 31, T3S R11E is Approx 2 1/2 chs North. Three Mile Tr. is approx 26 chs South of cor. X in 34" DF.

Refer to T & R 310 notes on page 16.  
8/7/79 notes (Dale Bowdish-Forester): Brasscap in good cond. 6" above ground. Sec 25 BT is now skid trail & Sec 36 BT is wind thrown stump. About 240' West to road.

### 7. Photo Identification

Photo No. \_\_\_\_\_  
Ident. By: \_\_\_\_\_

### 8. Plane Coordinate Position Data

State \_\_\_\_\_ Zone \_\_\_\_\_  
X \_\_\_\_\_  
Y \_\_\_\_\_  
Estab. By \_\_\_\_\_  
Field Book No. \_\_\_\_\_  
Where Filed \_\_\_\_\_

### 9. Evaluation

Authentic   
Needs Verif. yes Monument yes  
Re-estab. \_\_\_\_\_ Survey \_\_\_\_\_  
Land Status \_\_\_\_\_

6. Signed C. E. Carpenter Title Forestry Tech Date 8-5-66

# PERPETUATION RECORD

**10. Monument:**

NAME: MONUMENT

NUMBER:

DATE:

**11. Accessories:**

TYPE:

DATE:

X

X

DATE:

TYPE:

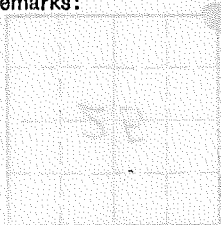
12. Set By \_\_\_\_\_ Title \_\_\_\_\_

License \_\_\_\_\_ Agency \_\_\_\_\_ Date \_\_\_\_\_

13. Recorded By \_\_\_\_\_ Volume \_\_\_\_\_ Page \_\_\_\_\_  
(Agency)

(Date) (City) (County) (State)

**14. Remarks:**



DATE:

*[Faint, illegible text and circular stamps are visible in the background of the lower right section.]*

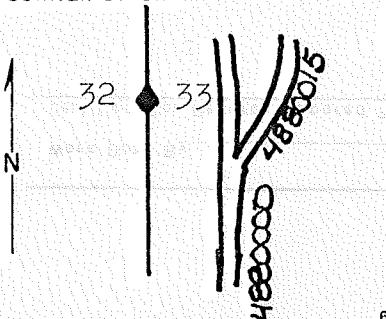
Index  
 File No. X 9  
 T 3 S R. 10 E  
 Merid. W.M.

**CORNER RECORD (SEARCH)**  
 (Ref. FSM 7151.4)


Tract or  
 Survey No. \_\_\_\_\_  
 Cor. X 9  
 No. 1601-03

R.D. Barlow County Hood River  
 N.F.Mt. Hood State Oregon

**CORNER DIAGRAM**



**DESCRIBE CORNER MONUMENT FOUND**

Brass cap:  


**DESCRIBE BEARING TREES OR OTHER OFFICIAL ACCESSORIES FOUND**

A Noble Fir 18.8" bears N75E- 35Ft.- grown over.  
 A Doug Fir 31" bears N79W- 40 Ft.- grown over.

**PHOTO IDENTIFICATION DATA**

Photo No. 616060-478-30  
 Filed At. Planning  
 Object Ident. Pin prick  
 Ident. By Bowdish  
*Signature*

**DESCRIBE CORNER LOCATION RELATIVE TO NEAR-BY FEATURES, ALSO HOW TO REACH CORNER**

About 100 feet above road intersection

**PLANE COORDINATE POSITION DATA**

State \_\_\_\_\_ Zone \_\_\_\_\_  
 X \_\_\_\_\_  
 Y \_\_\_\_\_  
 Estab. By \_\_\_\_\_  
*Agency*

*Signature*  


Title Forester Division Planning Headquarters Barlow

Date 11-21-80 7100-52 (3/68)

CORNER RECORD (PERPETUATION)

MONUMENT : DESCRIBE NEW MONUMENT SET, OR WORK DONE TO PRESERVE EXISTING MONUMENT

ACCESSORIES : DESCRIBE NEW BT'S WITNESS OBJECTS ETC. ESTABLISHED, OR WORK DONE TO PRESERVE EXISTING EVIDENCE

Work Done By \_\_\_\_\_ Title \_\_\_\_\_ Date \_\_\_\_\_ State Registration No. or Agency \_\_\_\_\_  
Certified Cor. Record Prepared ? Yes No Filed At: \_\_\_\_\_ Date \_\_\_\_\_

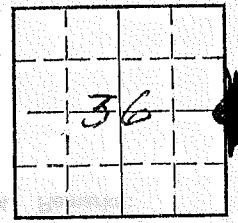
REMARKS

Index File No. \_\_\_\_\_ T. \_\_\_\_\_ R. \_\_\_\_\_ M. \_\_\_\_\_ Tract or Surv. No. \_\_\_\_\_ Cor. \_\_\_\_\_

LAND CORNER RECORD

1. T. 3S R. 10E No. X 25 Cor. E 1/4 Mer. Will State Oregon (Rectangular) N. F. Mt. Hood Dist. Ba X 25  
 1502-A3

2. Corner Status



7. Photo Identification 7-14-72  
 Photo No. L30017-8-9  
 Ident. By: Bowdish

8. Plane Coordinate Position Data  
 State \_\_\_\_\_ Zone \_\_\_\_\_  
 X \_\_\_\_\_  
 Y \_\_\_\_\_  
 Estab. By \_\_\_\_\_  
 Field Book No. \_\_\_\_\_  
 Where Filed \_\_\_\_\_

9. Evaluation  
 Authentic \_\_\_\_\_  
 Needs Verif. Monument yes  
 Re-estab. Survey  
 Land Status \_\_\_\_\_

3. Original Description \_\_\_\_\_ Vol. \_\_\_\_\_ Page \_\_\_\_\_ Where Recorded \_\_\_\_\_

4. Description of Corners: Set iron post 3' x 1" 27" in ground for 1/4 Sec cor of Sec 36 only with brass cap mkd 1/4 S36 from which a Tamarack 8" bears S55W 58 lks mkd 1/4 S36 BT. A DF 45" bears N71W 91 lks mkd 1/4 S36 BT.

5. Investigation Notes:  
 Corner is 3/4" pipe w/cap, above ground 14", in good condition, markings: General Land Office Survey 1938, as above.  
 WL 14" S54W 35' grown over. Put Form 54-3 on BT and Form 54-6 on 3" WF 3' N of corner. 1/4 cor for Sec 31 is approx 2 1/2 chs North of this corner.

8/79 BT 56" Df 57.7' N 71 W in good condition and posted with BT Tag, Damage sign posted (54-4)  
 Corner is about 290' south of old spur road.  
 Dale M. Bowdish

Also 16" Tam bears S55W, 35'.

Refer to T & R 310 notes on page 16.

6. Signed E. C. Carpenter Title Forestry tech. Date 6-24-66

# PERPETUATION RECORD

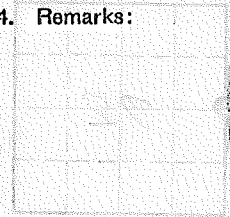
10. Monument:

11. Accessories

12. Set By \_\_\_\_\_ Title \_\_\_\_\_  
License \_\_\_\_\_ Agency \_\_\_\_\_ Date \_\_\_\_\_

13. Recorded By \_\_\_\_\_ Volume \_\_\_\_\_ Page \_\_\_\_\_  
(Agency) \_\_\_\_\_  
(Date) \_\_\_\_\_ (City) \_\_\_\_\_ (County) \_\_\_\_\_ (State) \_\_\_\_\_

14. Remarks:



Corner Status

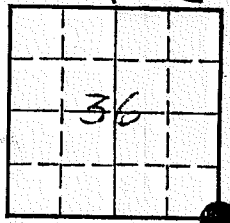


Photo Identification  
to No. \_\_\_\_\_  
nt. By: \_\_\_\_\_

Plane Coordinate Position Data  
te \_\_\_\_\_ Zone \_\_\_\_\_

ab. By \_\_\_\_\_  
d Book No. \_\_\_\_\_  
ere Filed \_\_\_\_\_

Evaluation  
hentic \_\_\_\_\_  
ds Verif. Monument yes  
estab. Survey \_\_\_\_\_  
d Status \_\_\_\_\_

3. Original Description \_\_\_\_\_ Vol. \_\_\_\_\_ Page \_\_\_\_\_ Where Recorded \_\_\_\_\_

4. Description of Corners: Reestablishment 1882 Survey. Monument set at old corner 1938. Set an iron post 3'x3" 27" in ground for cor of TPs 3 & 4S Rs 9 & 10E w/brass cap. DF 28" N27E, 37 lks mkd T3S R10E S31 BT DF 9" S26E 66 lks mkd T4S R10E S6 BT. Tam. 8" S25W 28 lks mkd T4S R9E S1 BT. DF 9" N49W 70 lks mkd T3S R9E S36 BT.

Mkd: R9E R10E  
S36 S31

5. Investigation Notes:

Corner is 2" iron pipe w/3/2" brass cap, above ground 12", in good condition. U.S. General Land Office markings (1938) as above. BT S21°30'W 14" Larch. BT N32°30'E 30" DF. Mound of rock 3' high South of corner. Corner is 615' East of Road S346 P line.

S1 S6  
T4S  
1938

MICROFILMED

6. Signed C. Goodwin Title Survey Tech. Date 8-8-66



Index File No. Z 9

**CORNER RECORD (SEARCH)**

(Ref. FSM 7151.4)

Tract or

Survey No. \_\_\_\_\_

Cor.

No. Z 9

1601-03

T 3 S R. 10 E

R.D. Barlow

County

Hood River

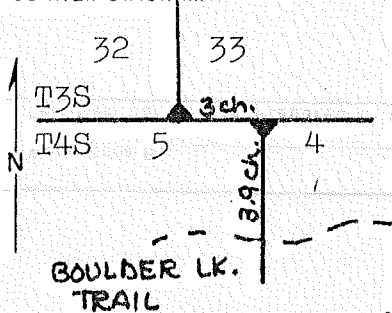
Merid. W.M.

N.F. Mt. Hood

State

Oregon

**CORNER DIAGRAM**



**DESCRIBE CORNER MONUMENT FOUND**

Brass cap:

T3S | R10E

S32 | S33

T4S | R10E

Sec 5

1938

**DESCRIBE BEARING TREES OR OTHER OFFICIAL ACCESSORIES FOUND**

A Noble Fir dead & down-scribing visible-N43E-89 lks.

A Doug Fir 18.6"- over grown- N24W, 14.4 Ft.

**PHOTO IDENTIFICATION DATA**

Photo No. \_\_\_\_\_

Filed At. \_\_\_\_\_

Object Ident. \_\_\_\_\_

Ident. By \_\_\_\_\_

*Signature*

**PLANE COORDINATE POSITION DATA**

State \_\_\_\_\_ Zone \_\_\_\_\_

X \_\_\_\_\_

Y \_\_\_\_\_

Estab. By \_\_\_\_\_

*Agency*

**DESCRIBE CORNER LOCATION RELATIVE TO NEAR-BY FEATURES, ALSO HOW TO REACH CORNER**

About 3.9 chs. North of location posters on Boulder Lake trail and 3 chs. West.

*Refer to 1938 Mt. Hood State 310 page 11*

Signature

*Rob M. [Signature]*

Title

Division

Headquarters

Forester Planning Barlow

Date

11-21-80

7100-52 (3/68)

CORNER RECORD (PERPETUATION)

11-21-90  
Date

MONUMENT: DESCRIBE NEW MONUMENT SET, OR WORK DONE TO PRESERVE EXISTING MONUMENT

ALL BT TAGS & "ATTENTION SIGNS POSTED.

ACCESSORIES : DESCRIBE NEW BT'S WITNESS OBJECTS ETC. ESTABLISHED, OR WORK DONE TO PRESERVE EXISTING EVIDENCE

Work Done By \_\_\_\_\_ Title \_\_\_\_\_ Date \_\_\_\_\_ State Registration No. \_\_\_\_\_  
or Agency \_\_\_\_\_  
Certified Cor. Record Prepared ? Yes No Filed At \_\_\_\_\_ Date \_\_\_\_\_

REMARKS

Index File No. \_\_\_\_\_ T. \_\_\_\_\_ R. \_\_\_\_\_ M. \_\_\_\_\_ Tract or Surv. No. \_\_\_\_\_ Cor. \_\_\_\_\_

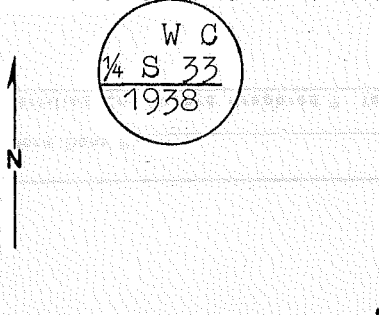
Index Z 11  
File No. \_\_\_\_\_

**CORNER RECORD (SEARCH)**  
(Ref. FSM 7151.4)

Tract or Survey No. \_\_\_\_\_  
Cor. No. \_\_\_\_\_

T 3 S R. 10 E R.D. Barlow County Hood River  
Merid. W.M. N.F. Mt. Hood State Oregon

**CORNER DIAGRAM**



**DESCRIBE CORNER MONUMENT FOUND**

True point for 1/4 sec. cor. of sec. 33 only, falls in the bed of Crane Creek, 40 lks wide.

Witness Cor. set: Set an iron post, 3ft. long, 1" diam., 6" in the ground to bedrock, & in a mound of stone to top, for Wit. Cor. of Sec. 33 only - brass cap mkd: (to left)

**DESCRIBE BEARING TREES OR OTHER OFFICIAL ACCESSORIES FOUND**

A 16" Hemlock bears N 63 1/2 E, 70 lks, mkd: WC 1/4 S 33 BT.

A 33" Doug. F bears N 8 W, 119 lks, mkd: WC 1/4 S 33 BT.

**PHOTO IDENTIFICATION DATA**

Photo No. \_\_\_\_\_  
Filed At. \_\_\_\_\_  
Object Ident. \_\_\_\_\_  
Ident. By \_\_\_\_\_  
*Signature*

**PLANE COORDINATE POSITION DATA**

State \_\_\_\_\_ Zone \_\_\_\_\_  
X \_\_\_\_\_  
Y \_\_\_\_\_  
Estab. By \_\_\_\_\_  
*Agency*

**DESCRIBE CORNER LOCATION RELATIVE TO NEAR-BY FEATURES, ALSO HOW TO REACH CORNER**

Descend 15 ft. from Witness Corner over SW Slope to true point which lies in bed of Crane Creek.

*By 10 & 11 of 1938 notes*

Signature Lenord Carter Title Public Land Surveyor Division \_\_\_\_\_ Headquarters \_\_\_\_\_ Date 1938 7100-52 (3.68)

**CORNER RECORD (PERPETUATION)**

**MONUMENT - DESCRIBE NEW MONUMENT SET, OR WORK DONE TO PRESERVE EXISTING MONUMENT**

DATE \_\_\_\_\_

BY \_\_\_\_\_

AT THE COORDINATE POSITION OVER \_\_\_\_\_

\_\_\_\_\_

\_\_\_\_\_

**ACCESSORIES - DESCRIBE NEW BT<sup>1</sup>s WITNESS OBJECTS ETC. ESTABLISHED, OR WORK DONE TO PRESERVE EXISTING EVIDENCE**

LIST OF \_\_\_\_\_

BT<sup>1</sup> NO \_\_\_\_\_

BT<sup>1</sup> IDENTIFICATION OVER \_\_\_\_\_

\_\_\_\_\_

\_\_\_\_\_

Work Done By \_\_\_\_\_ Title \_\_\_\_\_ Date \_\_\_\_\_ State Registration No. or Agency \_\_\_\_\_

Certified Cor. Record Prepared? Yes  No  Filed At \_\_\_\_\_ Date \_\_\_\_\_

**REMARKS**

\_\_\_\_\_

\_\_\_\_\_

\_\_\_\_\_

\_\_\_\_\_

\_\_\_\_\_

\_\_\_\_\_

\_\_\_\_\_

\_\_\_\_\_

\_\_\_\_\_

\_\_\_\_\_

\_\_\_\_\_

Index File No. T. R. M. Tract or Surv. No. Cor. \_\_\_\_\_

USDA-FOREST SERVICE

Index

File No. Z 13

T 3 S 10 R. 10 E

Merid. W.M.

CORNER RECORD (SEARCH)

(Ref. FSM 7151.4)

Tract or

Survey No. \_\_\_\_\_

Cor.

No. \_\_\_\_\_

R.D. Barlow

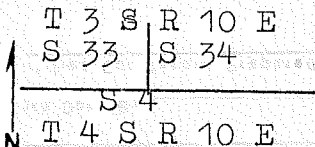
County Hood River

N.F. Mt. Hood

State Oregon

Z 13  
1601-23

CORNER DIAGRAM



DESCRIBE CORNER MONUMENT FOUND

An iron post, 3ft. long, 2" diam., 27" in the ground, for cor. of secs. 33 & 34 only, with brasscap marked:



DESCRIBE BEARING TREES OR OTHER OFFICIAL ACCESSORIES FOUND

A Noble, 24" diam., bears N80 1/2 E, 226 lks, mkd: T3S R10E S34 BT.  
Raised a mound of stone, 3ft. base, 2 ft. high, N. of corner.

PHOTO IDENTIFICATION DATA

Photo No. \_\_\_\_\_

Filed At. \_\_\_\_\_

Object Ident. \_\_\_\_\_

Ident. By \_\_\_\_\_

Signature

PLANE COORDINATE POSITION DATA

State \_\_\_\_\_ Zone \_\_\_\_\_

X \_\_\_\_\_

Y \_\_\_\_\_

Estab. By \_\_\_\_\_

Agency

DESCRIBE CORNER LOCATION RELATIVE TO NEAR-BY FEATURES, ALSO HOW TO REACH CORNER

Refer to notes on page 10 of T&R 310.

Signature

Title

Division

Headquarters

Date

Leonard Carter

Public Land Surveyor

1938

7100-52 (3.68)

## CORNER RECORD (PERPETUATION)

**MONUMENT. DESCRIBE NEW MONUMENT SET, OR WORK DONE TO PRESERVE EXISTING MONUMENT** 9

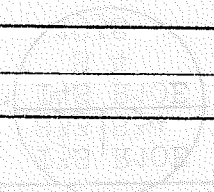
**ACCESSORIES — DESCRIBE NEW BT'S WITNESS OBJECTS ETC. ESTABLISHED, OR WORK DONE TO PRESERVE EXISTING EVIDENCE** 9

**Work Done By** \_\_\_\_\_ **Title** \_\_\_\_\_ **Date** \_\_\_\_\_ **State Registration No. or Agency** \_\_\_\_\_ 10

**Verified Cor. Record Prepared ?** Yes  No  **Filed At** \_\_\_\_\_ **Date** \_\_\_\_\_ 11

### REMARKS

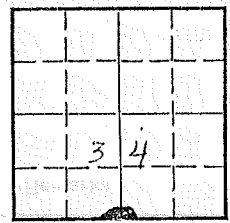
**Index File No.** \_\_\_\_\_ **T.** \_\_\_\_\_ **R.** \_\_\_\_\_ **M.** \_\_\_\_\_ **Tract or Surv. No.** \_\_\_\_\_ **Cor.** \_\_\_\_\_ 12



LAND CORNER RECORD

1. T. 35 R. 10E No. 215 Cor. S 1/4 Mer. 1M State Oregon N. F. Mt. Hood Dist. B. Z 15 1503-B3

2. Corner Status



7. Photo Identification

Photo No. \_\_\_\_\_  
Ident. By: \_\_\_\_\_

8. Plane Coordinate Position Data

State \_\_\_\_\_ Zone \_\_\_\_\_  
X \_\_\_\_\_  
Y \_\_\_\_\_  
Estab. By \_\_\_\_\_  
Field Book No. \_\_\_\_\_  
Where Filed \_\_\_\_\_

9. Evaluation

Authentic \_\_\_\_\_ X  
Needs Verif. \_\_\_\_\_ Monument Yes  
Re-estab. \_\_\_\_\_ Survey  
Land Status \_\_\_\_\_ Gil.

3. Original Description Vol. \_\_\_\_\_ Page \_\_\_\_\_ Where Recorded \_\_\_\_\_

4. Description of Corners Old Survey 1862, Basalt Stone 10" x 12" x 7" for cor. top on S 3/4, T 35 R 10 E, on face of from which a pine 10" dia. br. S 15' W 3 1/2 lks; S 1/4; a pine 18" dia. br. N 18 1/2 lks; S 1/4; Resurvey 1938; Iron Post 3' long 1" dia. 27" inground for sec. cor. of Sec. 3, on lvs/brass cap on S 3/4. From which a lodge pole pine 2" dia. br. N 11' E 6 1/2 lks; S 1/4; 1/4 cor. Hem. br. 1938 N 53' W 78 lks; S 3/4; This brass cap is 1.0 ch. W of brass cap for Sec. 3, T 35, R 10 E.

5. Investigation Notes: Corner is 3/4" pipe w/2" brass cap in pile of rock., 14" above ground condition good 1/4 S 3/4. No BTs found Form 1503 on LP 7" S 76 W 7', 1/4 cor. for sec. 3, + 4S, R 10E is app. 1 ch. E of this corner, Corner was put in by Gen. Land Office survey 1938.



Refer to page 9 in grid 310 notes-1938

6. Signed E.E. Carpenter Title Forestry Tech. Date 9/15/64

# PERPETUATION RECORD

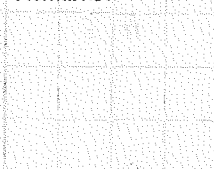
10. Monument: \_\_\_\_\_

11. Accessories \_\_\_\_\_

12. Set By \_\_\_\_\_ Title \_\_\_\_\_

License \_\_\_\_\_ Agency \_\_\_\_\_ Date \_\_\_\_\_

14. Remarks:



Field Book \_\_\_\_\_ Page \_\_\_\_\_  
13. Recorded By \_\_\_\_\_ Volume \_\_\_\_\_ Page \_\_\_\_\_  
(Agency) \_\_\_\_\_  
(Date) (City) (County) (State)



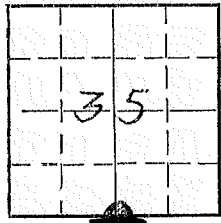


LAND CORNER RECORD

Z 19

1. T 3 S R 10 E No. 2 19 Cor. S 1/4 Mer. Will State <sup>(Rectangular)</sup> Oregon N. F. Mt. Hood Dist. B 1503-03

2. Corner Status



7. Photo Identification

Photo No. \_\_\_\_\_  
Ident. By: \_\_\_\_\_

8. Plane Coordinate Position Data

State \_\_\_\_\_ Zone \_\_\_\_\_  
X \_\_\_\_\_  
Y \_\_\_\_\_  
Estab. By \_\_\_\_\_  
Field Book No. \_\_\_\_\_  
Where Filed \_\_\_\_\_

9. Evaluation

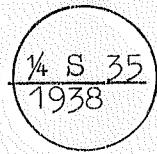
Authentic   
Needs Verif.  Monument yes  
Re-estab.  Survey  
Land Status \_\_\_\_\_

3. Original Description \_\_\_\_\_ Vol. \_\_\_\_\_ Page \_\_\_\_\_ Where Recorded \_\_\_\_\_

4. Description of Corners: At 40.01 chs. set an iron post 3'x1" 27" in the ground for 1/4 Sec cor of Sec 35 only with brass cap marked 1/4 S35 from which a NF 23" bears N51E 13 lks mkd 1/4 S35BT. A NF 28" 1938 bears N33W 74 lks mkd 1/4 S35BT.

5. Investigation Notes:

Corner is 3/4" pipe w/cap, above ground 14", good condition, markings: Gen Land Office Survey 1938 as above.  
MH 27" N54E 8 1/2' mkd 1/4 S35BT.  
NF 28" N30W 48' grown over.  
Put Form 54-3 on BT'S and 54-5 on MH 10" S48E 6' of cor.  
1/4 cor to Sec 2 T4S R10E is approx 42' East.



Refer to Grid 310 notes- 1938 on page 7.

6. Signed E.E. Carpenter Title Forestry Tech Date 6-28-66

Monument:

1. Name  
2. Location  
3. Description

Accessories

1. Name  
2. Description  
3. Location  
4. Date

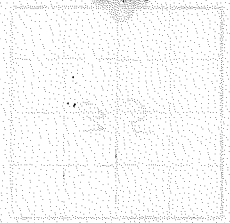


Field Book \_\_\_\_\_ Page \_\_\_\_\_

Set By \_\_\_\_\_ Title \_\_\_\_\_  
no. \_\_\_\_\_ Agency \_\_\_\_\_ Date \_\_\_\_\_

13. Recorded By \_\_\_\_\_ Volume \_\_\_\_\_ Page \_\_\_\_\_  
(Agency)  
(Date) (City) (County) (State)

Remarks:



Remarks area containing faint, illegible text and a large rectangular box for notes.

Index Z 21

File No. \_\_\_\_\_

**CORNER RECORD (SEARCH)**

(Ref. FSM 7151.4)

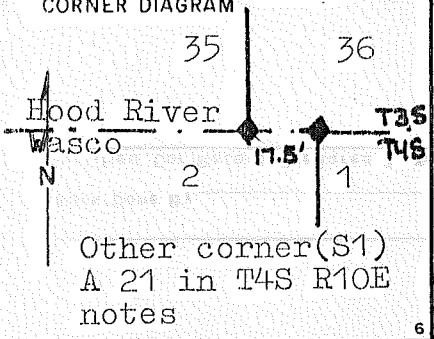
Tract or  
Survey No. \_\_\_\_\_

Cor.  
No. \_\_\_\_\_

Z 21  
1503-D3

T 3 S W.M. 10 E R.D. Barlow County Wasco & Hood River  
Merid. \_\_\_\_\_ N.F. Mt. Hood State Oregon

**CORNER DIAGRAM**



**DESCRIBE CORNER MONUMENT FOUND**

Brasscap on pipe- height above ground 2"x12" in very good condition

T3S	R10E
S35	S36
T4S	R10E
S2	

**DESCRIBE BEARING TREES OR OTHER OFFICIAL ACCESSORIES FOUND**

DF 37.5" - N40W- 34 Ft.- grown over (tag)  
DF 23" - N21E- 67 Ft.- grown over (tag)

**PHOTO IDENTIFICATION DATA**

Photo No. \_\_\_\_\_  
Filed At. \_\_\_\_\_  
Object Ident. \_\_\_\_\_  
Ident. By \_\_\_\_\_  
*Signature*

**DESCRIBE CORNER LOCATION RELATIVE TO NEAR-BY FEATURES, ALSO HOW TO REACH CORNER**

Metal tag on old stump on logging rd. 10 chains North of corner.  
Metal tag on NF tree 20"- 5 ch. East of corner.

**PLANE COORDINATE POSITION DATA**

State \_\_\_\_\_ Zone \_\_\_\_\_  
X \_\_\_\_\_  
Y \_\_\_\_\_  
Estab. By \_\_\_\_\_  
*Agency*

*Refer to page 6 Grid 310 1938 notes.*

Signature  
E.E.C.

Title  
F.T.

Division \_\_\_\_\_

Headquarters \_\_\_\_\_

Date  
6-1-62

7100-52 (3/68)

CORNER RECORD (PERPETUATION)

MONUMENT: DESCRIBE NEW MONUMENT SET, OR WORK DONE TO PRESERVE EXISTING MONUMENT

9

ACCESSORIES: DESCRIBE NEW BT'S WITNESS OBJECTS ETC. ESTABLISHED, OR WORK DONE TO PRESERVE EXISTING EVIDENCE

10

Work Done By \_\_\_\_\_ Title \_\_\_\_\_ Date \_\_\_\_\_ State Registration No. or Agency \_\_\_\_\_

Certified Cor. Record Prepared? Yes No Filed At: \_\_\_\_\_ Date \_\_\_\_\_

REMARKS

12

Index File No. T. R. M. Tract or Surv. No. Cor. \_\_\_\_\_

13

Index

CORNER RECORD (SEARCH)

Tract or

Cor. No.

Z 23  
7503-D3

File No.

Z 23

(Ref. FSM 7151.4)

Survey No.

T 3 S

R. 10 E

R.D. Barlow

County

Wasco-Hood River

Merid.

Willamette

N.F.

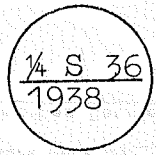
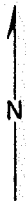
Mt. Hood

State

Oregon

CORNER DIAGRAM

DESCRIBE CORNER MONUMENT FOUND



Brass Cap 14" above the ground

DESCRIBE BEARING TREES OR OTHER OFFICIAL ACCESSORIES FOUND

None

PHOTO IDENTIFICATION DATA

Photo No. \_\_\_\_\_

Filed At. \_\_\_\_\_

Object Ident. \_\_\_\_\_

Ident. By \_\_\_\_\_

*Signature*

DESCRIBE CORNER LOCATION RELATIVE TO NEAR-BY FEATURES, ALSO HOW TO REACH CORNER

Refer to Grid 310 notes- 1938 on page 5.

PLANE COORDINATE POSITION DATA

State \_\_\_\_\_

Zone \_\_\_\_\_

X \_\_\_\_\_

Y \_\_\_\_\_

Estab. By \_\_\_\_\_

*Agency*

*Signature*  
E. E. Carpenter

*Title*  
Forestry Tech.

*Division*

*Headquarters*

*Date*  
7/24/67

7100-52 (3/68)

# CORNER RECORD (PERPETUATION)

MONUMENT: DESCRIBE NEW MONUMENT SET, OR WORK DONE TO PRESERVE EXISTING MONUMENT

ACCESSORIES: DESCRIBE NEW BT'S WITNESS OBJECTS ETC. ESTABLISHED, OR WORK DONE TO PRESERVE EXISTING EVIDENCE

Work Done By \_\_\_\_\_ Title \_\_\_\_\_ Date \_\_\_\_\_ State Registration No. \_\_\_\_\_  
or Agency \_\_\_\_\_  
Certified Cor. Record Prepared? Yes No Filed At: \_\_\_\_\_ Date \_\_\_\_\_

REMARKS

Index File No. \_\_\_\_\_ T. \_\_\_\_\_ R. \_\_\_\_\_ M. \_\_\_\_\_ Tract or Surv. No. \_\_\_\_\_ Cor. \_\_\_\_\_