

	1	2	3	4	5	6	7	8	9	10	11	12	13	14	15	16	17	18	19	20	21	22	23	24	25
A	+	+	+	+	+	+	+	+	+	+	+	+	+	+	+	+	+	+	+	+	+	+	+	+	+
B	+	+	+	+	+	+	+	+	+	+	+	+	+	+	+	+	+	+	+	+	+	+	+	+	+
C	+	6	+	+	5	+	+	+	+	4	+	+	3	+	+	2	+	+	+	+	1	+	+	+	
D	+	+	+	+	+	+	+	+	+	+	+	+	+	+	+	+	+	+	+	+	+	+	+	+	
E	+	+	+	+	+	+	+	+	+	+	+	+	+	+	+	+	+	+	+	+	+	+	+	+	
F	+	+	+	+	+	+	+	+	+	+	+	+	+	+	+	+	+	+	+	+	+	+	+	+	
G	+	7	●	+	8	+	+	+	+	9	+	+	10	+	+	11	+	+	+	+	12	+	+	+	
H	+	+	+	+	+	+	+	+	+	+	+	+	+	+	+	+	+	+	+	+	+	+	+	+	
J	+	+	+	+	+	+	+	+	+	+	+	+	+	+	+	+	+	+	+	+	+	+	+	+	
K	+	+	+	+	+	+	+	+	+	+	+	+	+	+	+	+	+	+	+	+	+	+	+	+	
L	+	18	+	+	17	+	+	+	+	16	+	+	15	+	+	14	+	+	+	+	13	+	+	+	
M	+	+	+	+	+	+	+	+	+	+	+	+	+	+	+	+	+	+	+	+	+	+	+	+	
N	+	+	+	+	+	+	+	+	+	+	+	+	+	+	+	+	+	+	+	+	+	+	+	+	
O	+	+	+	+	+	+	+	+	+	+	+	+	+	+	+	+	+	+	+	+	+	+	+	+	
P	+	19	+	+	20	+	+	+	+	21	+	+	22	+	+	23	+	+	+	+	24	+	+	+	
Q	+	+	+	+	+	+	+	+	+	+	+	+	+	+	+	+	+	+	+	+	+	+	+	+	
R	●	+	+	+	+	+	+	+	+	+	+	+	+	+	+	+	+	+	+	+	+	+	+	+	
S	+	+	+	+	+	+	+	+	+	+	+	+	+	+	+	+	+	+	+	+	+	+	+	+	
T	●	+	30	+	+	29	+	+	+	28	+	+	27	+	+	26	+	+	+	+	25	+	+	+	
U	+	+	+	+	+	+	+	+	+	+	+	+	+	+	+	+	+	+	+	+	+	+	+	+	
V	●	●	+	●	+	+	+	+	+	+	+	+	+	+	+	+	+	+	+	+	+	+	+	+	
W	+	+	+	+	+	+	+	+	+	+	+	+	+	+	+	+	+	+	+	+	+	+	+	+	
X	+	31	+	+	32	+	+	+	+	33	+	+	34	+	+	35	+	+	+	+	36	+	+	+	
Y	+	+	+	+	+	+	+	+	+	+	+	+	+	+	+	+	+	+	+	+	+	+	+	+	
Z	+	+	+	+	+	+	+	+	+	+	+	+	+	+	+	+	+	+	+	+	+	+	+	+	

**LEGEND**

○ = Corner having information on form 5680-2 in this file.

**FILING INSTRUCTION**

File 5680-2 card record by letter and number coordinates behind the file guide for the township in which it falls.

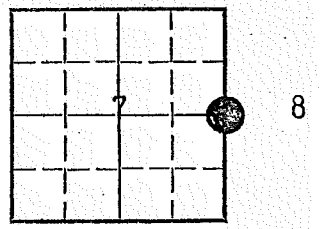
File the 5680-2 card record by letter and then by number i.e., all A cards first, then B cards etc.

The first card behind the file guide (if data have been obtained and recorded) will be card A-1 for N.W. Township Corner, then card A-2 for 1/16 corner then card A-3 for 1/4 corner etc.

LAND CORNER RECORD

1. T. 1 S. R. 7 E. No. G5 Cor. 1/4 Mer. Will State Oregon (Rectangular) N. F. Mt. Hood Dist. Col. Gorge

2. Corner Status



7. Photo Identification

Photo No. \_\_\_\_\_  
Ident. By: \_\_\_\_\_

8. Plane Coordinate Position Data

State \_\_\_\_\_ Zone \_\_\_\_\_  
X \_\_\_\_\_  
Y \_\_\_\_\_  
Estab. By \_\_\_\_\_  
Field Book No. \_\_\_\_\_  
Where Filed \_\_\_\_\_

9. Evaluation

Authentic   
Needs Verif. \_\_\_\_\_ Monument *eyes*  
Re-estab. \_\_\_\_\_ Survey  
Land Status \_\_\_\_\_

3. Original Description \_\_\_\_\_ Vol. \_\_\_\_\_ Page \_\_\_\_\_ Where Recorded \_\_\_\_\_

4. Description of Corners:

5. Investigation Notes: I found a brass cap, 2", good condition, 1 ft. above ground, marked: 1/4 Cor. S7/S8, General Land Office Survey 1927 The "S" by "S8" is obliterated. Two witness trees. Hemlock snag east, Hemlock west. Circular tag on Cedar 2' south of corner. Tag has 8627 on one side. Two feet to corner on other side. Corner located approximately 12' N.W. of Sta. 546+27 on Fir Creek Timber Sale P-Line.

54627  
53759  
868

6. Signed Ken Lindsey Title Forester Date 11/2/65

Index File No. R-1

CORNER RECORD (SEARCH)

Tract or Survey No. \_\_\_\_\_

Cor. No. 25, 19, 30 <sup>Sec</sup>

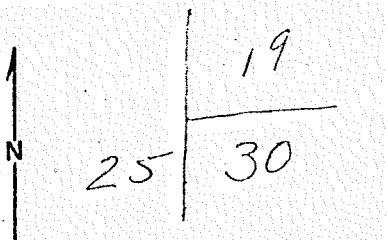
T 1 S R. 7 E

R.D. Columbia Gorge County Mult

Merid. Willamette

N.F. Mt. Hood State Oregon

CORNER DIAGRAM



DESCRIBE CORNER MONUMENT FOUND

Found iron pipe, 2" diameter cap, 1 foot above ground, fair condition.

DESCRIBE BEARING TREES OR OTHER OFFICIAL ACCESSORIES FOUND

T 1 S	T 1 S
S 25	S 19
R 6 E	S 30
	R 7 E

1927

U. S. General Land Office  
Survey - Penalty \$250 for  
Removal

PHOTO IDENTIFICATION DATA

Photo No. \_\_\_\_\_

Filed At. \_\_\_\_\_

Object Ident. \_\_\_\_\_

Ident. By \_\_\_\_\_

*Signature*

PLANE COORDINATE POSITION DATA

State \_\_\_\_\_ Zone \_\_\_\_\_

X \_\_\_\_\_

Y \_\_\_\_\_

Estab. By \_\_\_\_\_

*Agency*

DESCRIBE CORNER LOCATION RELATIVE TO NEAR-BY FEATURES, ALSO HOW TO REACH CORNER

Signature  
M. Lehnen and A. Jacobson

Title  
Forestry Tech

Division

Headquarters

Date

5/2/68

7100-52

REV. 65 5

Index \_\_\_\_\_  
File No. T-1

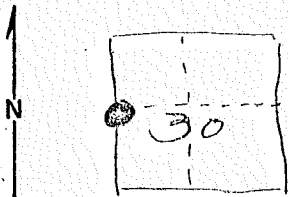
CORNER RECORD (SEARCH)

Tract or Survey No. \_\_\_\_\_  
Cor. No. 1/4  
30

T 1 S \_\_\_\_\_ R. 7 E  
Merid. Willamette

R.D. Columbia Gorge County CLATSOP  
N.F. Mt. Hood State Oregon

CORNER DIAGRAM



DESCRIBE CORNER MONUMENT FOUND

Found iron pipe (3/4") with 2" cap, 12" above ground, fair condition.

DESCRIBE BEARING TREES OR OTHER OFFICIAL ACCESSORIES FOUND

1/4  
S 30  
1927

U.S. Government Land Office  
Survey - Penalty \$250 for  
Removal

PHOTO IDENTIFICATION DATA

Photo No. \_\_\_\_\_  
Filed At. \_\_\_\_\_  
Object Ident. \_\_\_\_\_  
Ident. By \_\_\_\_\_  
*Signature*

PLANE COORDINATE POSITION DATA

State \_\_\_\_\_ Zone \_\_\_\_\_  
X \_\_\_\_\_  
Y \_\_\_\_\_  
Estab. By \_\_\_\_\_  
*Agency*

Signature: R. Waitt and M. Lehnen

Title: Forester and Forestry Tech

Division \_\_\_\_\_

Headquarters \_\_\_\_\_

Date: 5/2/68

7100-52  
REV. 65 5

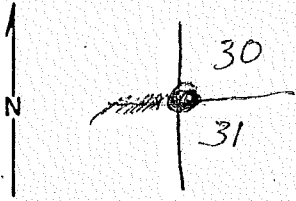
Index File No. V-J.  
T 1 S R. 7 E.  
Merid. Willamette

CORNER RECORD (SEARCH)

Tract or Survey No. \_\_\_\_\_  
Cor. No. 36,30,31 Sec. \_\_\_\_\_

R.D. Columbia Gorge County CLACK  
N.F. Mt. Hood State \_\_\_\_\_

CORNER DIAGRAM



DESCRIBE CORNER MONUMENT FOUND

Found iron pipe with 2 1/2" brass cap, 12" above ground, in fair condition. Corner marked with blue flagging.

DESCRIBE BEARING TREES OR OTHER OFFICIAL ACCESSORIES FOUND

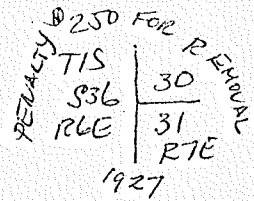


PHOTO IDENTIFICATION DATA

Photo No. \_\_\_\_\_  
Filed At. \_\_\_\_\_  
Object Ident. \_\_\_\_\_  
Ident. By \_\_\_\_\_  
*Signature*

PLANE COORDINATE POSITION DATA

State \_\_\_\_\_ Zone \_\_\_\_\_  
X \_\_\_\_\_  
Y \_\_\_\_\_  
Estob. By \_\_\_\_\_  
*Agency*

DESCRIBE CORNER LOCATION RELATIVE TO NEAR-BY FEATURES, ALSO HOW TO REACH CORNER

Signature Lehnen and Jacobson Title Forestry Techs Division \_\_\_\_\_ Headquarters \_\_\_\_\_ Date 5/68 7100-52 REV. 65 5

Index File No. V-3

CORNER RECORD (SEARCH)

Tract or Survey No. \_\_\_\_\_

Cor. 1/4  
No. 30

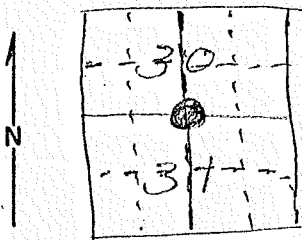
T 1 S R. 7 E

R.D. Columbia Gorge County CLACK

Merid. Willamette

N.F. Mt. Hood State \_\_\_\_\_

CORNER DIAGRAM



DESCRIBE CORNER MONUMENT FOUND

Iron pipe with 2 1/2" brass cap, 12" above ground, fair condition.  
Corner marked with blue flagging.

DESCRIBE BEARING TREES OR OTHER OFFICIAL ACCESSORIES FOUND

PENALTY \$250 FOR REMOVAL  
 1927 GENERAL LAND OFFICE  
 1/4 530  
 531  
 HAMMS

PHOTO IDENTIFICATION DATA

Photo No. \_\_\_\_\_  
 Filed At. \_\_\_\_\_  
 Object Ident. \_\_\_\_\_  
 Ident. By \_\_\_\_\_  
*Signature*

DESCRIBE CORNER LOCATION RELATIVE TO NEAR-BY FEATURES, ALSO HOW TO REACH CORNER

PLANE COORDINATE POSITION DATA

State \_\_\_\_\_ Zone \_\_\_\_\_  
 X \_\_\_\_\_  
 Y \_\_\_\_\_  
 Etab. By \_\_\_\_\_  
*Agency*

Signature

Title

Division

Headquarters

Date

Mick Lehnen and A. Jacobson Forestry Techs

5/6/68

7100-52

REV. 65 5

Index File No. V-25

CORNER RECORD (SEARCH)

Tract or Survey No. \_\_\_\_\_

Cor. Sec. No. 25, 36 Q30

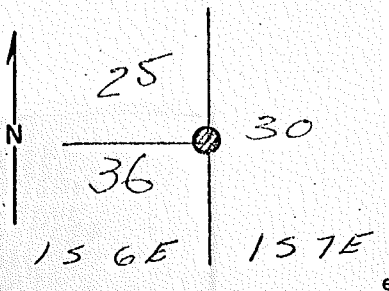
T 1 S R. 6 E

R.D. Columbia Gorge County \_\_\_\_\_

Merid. Willamette

N.F. Mt. Hood State Oregon

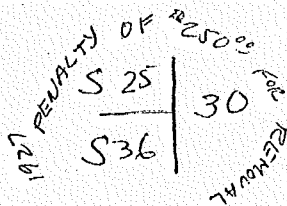
CORNER DIAGRAM



DESCRIBE CORNER MONUMENT FOUND

Found iron pipe with 2 1/2" cap, 12" above ground, in fair condition. Corner marked with blue flagging.

DESCRIBE BEARING TREES OR OTHER OFFICIAL ACCESSORIES FOUND



GENERAL LAND OFFICE SURVEY

PHOTO IDENTIFICATION DATA

Photo No. \_\_\_\_\_  
Filed At. \_\_\_\_\_  
Object Ident. \_\_\_\_\_  
Ident. By \_\_\_\_\_  
*Signature*

DESCRIBE CORNER LOCATION RELATIVE TO NEAR-BY FEATURES, ALSO HOW TO REACH CORNER

PLANE COORDINATE POSITION DATA

State \_\_\_\_\_ Zone \_\_\_\_\_  
X \_\_\_\_\_  
Y \_\_\_\_\_  
Estab. By \_\_\_\_\_  
*Agency*

Signature: Mick Lehman and Al Jacobson

Title Forestry Tech. Division \_\_\_\_\_

Headquarters \_\_\_\_\_

Date 5/5/68

7100-52 REV. 65 5