

**LEGEND**

○ = Corner having information on form 7100-52 in this file.

**FILING INSTRUCTION**

File 7100-52 card record by letter and number coordinates behind the file guide for the township in which it falls.

File the 7100-52 card record by letter and then by number i.e., all A cards first, then B cards etc.

The first card behind the file guide (if data have been obtained and recorded) will be card A-1 for N.W. Township Corner, then card A-2 for 1/16 corner then card A-3 for 1/4 corner etc.

	1	2	3	4	5	6	7	8	9	10	11	12	13	14	15	16	17	18	19	20	21	22	23	24	25
A	+	+	+	+	+	+	+	+	+	+	+	+	+	+	+	+	+	+	+	+	+	+	+	+	+
B	+	+	+	+	+	+	+	+	+	+	+	+	+	+	+	+	+	+	+	+	+	+	+	+	+
C	+	6	+	+	5	+	+	4	+	+	3	+	+	2	+	+	1	+	+	+	+	+	+	+	+
D	+	+	+	+	+	+	+	+	+	+	+	+	+	+	+	+	+	+	+	+	+	+	+	+	+
E	+	+	+	+	+	+	+	+	+	+	+	+	+	+	+	+	+	+	+	+	+	+	+	+	+
F	+	+	+	+	+	+	+	+	+	+	+	+	+	+	+	+	+	+	+	+	+	+	+	+	+
G	+	7	+	+	8	+	+	9	+	+	10	+	+	11	+	+	12	+	+	+	+	+	+	+	+
H	+	+	+	+	+	+	+	+	+	+	+	+	+	+	+	+	+	+	+	+	+	+	+	+	+
J	+	+	+	+	+	+	+	+	+	+	+	+	+	+	+	+	+	+	+	+	+	+	+	+	+
K	+	+	+	+	+	+	+	+	+	+	+	+	+	+	+	+	+	+	+	+	+	+	+	+	+
L	+	18	+	+	17	+	+	16	+	+	15	+	+	14	+	+	13	+	+	+	+	+	+	+	+
M	+	+	+	+	+	+	+	+	+	+	+	+	+	+	+	+	+	+	+	+	+	+	+	+	+
N	+	+	+	+	+	+	+	+	+	+	+	+	+	+	+	+	+	+	+	+	+	+	+	+	+
O	+	+	+	+	+	+	+	+	+	+	+	+	+	+	+	+	+	+	+	+	+	+	+	+	+
P	+	19	+	+	20	+	+	21	+	+	22	+	+	23	+	+	24	+	+	+	+	+	+	+	+
Q	+	+	+	+	+	+	+	+	+	+	+	+	+	+	+	+	+	+	+	+	+	+	+	+	+
R	+	+	+	+	+	+	+	+	+	+	+	+	+	+	+	+	+	+	+	+	+	+	+	+	+
S	+	+	+	+	+	+	+	+	+	+	+	+	+	+	+	+	+	+	+	+	+	+	+	+	+
T	+	30	+	+	29	+	+	28	+	+	27	+	+	26	+	+	25	+	+	+	+	+	+	+	+
U	+	+	+	+	+	+	+	+	+	+	+	+	+	+	+	+	+	+	+	+	+	+	+	+	+
V	+	+	+	+	+	+	+	+	+	+	+	+	+	+	+	+	+	+	+	+	+	+	+	+	+
W	+	+	+	+	+	+	+	+	+	+	+	+	+	+	+	+	+	+	+	+	+	+	+	+	+
X	+	31	+	+	●	+	+	●	+	33	+	+	34	+	+	35	+	+	36	+	+	+	+	+	+
Y	+	+	+	+	●	+	+	●	+	+	+	+	+	+	+	+	+	+	+	+	+	+	+	+	+
Z	+	+	+	+	●	+	+	●	+	+	+	+	+	+	+	+	+	+	+	+	+	+	+	+	+

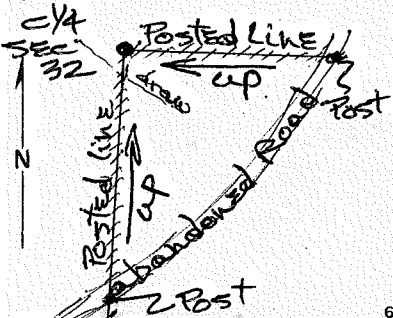
Index File No. X-7

CORNER RECORD (SEARCH)

Tract or Survey No. \_\_\_\_\_ Cor. No. \_\_\_\_\_

T IN R. SE R.D. Hood River County Hood River  
 Merid. W.M. N.F. Mt Hood State ORE.

CORNER DIAGRAM



DESCRIBE CORNER MONUMENT FOUND

*(Blank area with a diagonal line drawn across it)*

DESCRIBE BEARING TREES OR OTHER OFFICIAL ACCESSORIES FOUND

*(Blank area with a diagonal line drawn across it)*

PHOTO IDENTIFICATION DATA

Photo No. \_\_\_\_\_  
 Filed At. \_\_\_\_\_  
 Object Ident. \_\_\_\_\_  
 Ident. By \_\_\_\_\_  
 Signature \_\_\_\_\_

DESCRIBE CORNER LOCATION RELATIVE TO NEAR-BY FEATURES, ALSO HOW TO REACH CORNER

Going up Lake Branch Rd. take Rd. to right near SE 1/16 Sec 32, TIN, RSE. (F.S. Rd. # 1300690) go ~ 1.9 mi. to posted line - Part - hike up steep slope ~ 1/4 mile to corner - corner sets on left side of sharp little draw -

PLANE COORDINATE POSITION DATA

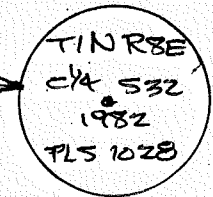
State \_\_\_\_\_ Zone \_\_\_\_\_  
 X \_\_\_\_\_  
 Y \_\_\_\_\_  
 Estab. By \_\_\_\_\_  
 Agency \_\_\_\_\_

Signature Danny L. Crow Title PLS 1028 Division \_\_\_\_\_ Headquarters \_\_\_\_\_ Date 1/6/83 FS-7100-52 (3/68)

### CORNER RECORD (PERPETUATION)

MONUMENT: DESCRIBE NEW MONUMENT SET, OR WORK DONE TO PRESERVE EXISTING MONUMENT

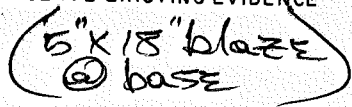
set 2"x30" Aluminum Pipe with 3" aluminum cap; set  
 1/24" in ground - cap stamped  
 set polymer post with 54-9 sign attached →  
 " " " " 54-2a " South facing East  
 " " " " " " East " South



ACCESSORIES : DESCRIBE NEW BT's WITNESS OBJECTS ETC. ESTABLISHED, OR WORK DONE TO PRESERVE EXISTING EVIDENCE

B.T.'s set:

9" D.F. - N. 50° E. - 3.4' - scribed "c/k 532 BT"  
 9" W.F. - S. 80° E. - 3.4' - " " " " c/k 532 BT"



set brass washers stamped "PLS 1028" at bottom of blazes  
 & attached B.T. tags & "ATT" signs to B.T.'s also painted 6" red band

Work Done By Danny L. Crow Title PLS 1028 Date 12/7/82 State Registration No. PLS 1028  
 or Agency

Certified Cor. Record Prepared ? Yes  No  Filed At: \_\_\_\_\_

REMARKS

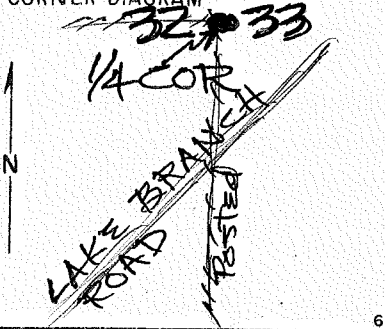
Index  
File No. X-9  
T IN R. SE  
Merid. Willamette

CORNER RECORD (SEARCH)

(Ref. FSM 7151.4)

Tract or Survey No. \_\_\_\_\_ Cor. No. \_\_\_\_\_  
R.D. Hood River County Hood River  
N.F. Mt Hood State ORE

CORNER DIAGRAM



DESCRIBE CORNER MONUMENT FOUND



DESCRIBE BEARING TREES OR OTHER OFFICIAL ACCESSORIES FOUND

Found - 5' stump of 24" D.F. - N. 10° E. - 28.38' with scribe 1/45 - orig. B.T.  
Found - Rotted remains of 30" fir stump - S. 47° W - 17.92' - orig. B.T.

PHOTO IDENTIFICATION DATA

Photo No. \_\_\_\_\_  
Filed At. \_\_\_\_\_  
Object Ident. \_\_\_\_\_  
Ident. By \_\_\_\_\_  
*Signature*

DESCRIBE CORNER LOCATION RELATIVE TO NEAR-BY FEATURES, ALSO HOW TO REACH CORNER

Get in vicinity going up Lake Branch Rd. - Will come to North/South posted line - Park - walk North up gentle slope ~ 600' to corner

PLANE COORDINATE POSITION DATA

State \_\_\_\_\_ Zone \_\_\_\_\_  
X \_\_\_\_\_  
Y \_\_\_\_\_  
Estab. By \_\_\_\_\_  
*Agency*

*Signature*  
Danney

Title  
PLS 1028

Division

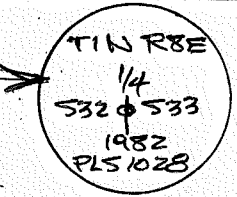
Headquarters

Date  
11/6/83

CORNER RECORD (PERPETUATION)

MONUMENT: DESCRIBE NEW MONUMENT SET, OR WORK DONE TO PRESERVE EXISTING MONUMENT

set 2"x30" Aluminum Pipe with 3" Aluminum cap - set  
1/24" in ground - cap stamped  
set polymer post with 54-4 sign attached  
" " " " " 54-2a South facing West  
" " " " " " " WEST " South



ACCESSORIES: DESCRIBE NEW BT's WITNESS OBJECTS ETC. ESTABLISHED, OR WORK DONE TO PRESERVE EXISTING EVIDENCE

B.T.'s SET:  
5" D.F. - S.60° E. - 15.3' - scribed "1/4 533 BT" (5" x 18" blaze @ base)  
4" D.F. - N.40° W. - 6.3' - " " " 1/4 532 BT"  
set brass disc stamped "LS 1028" @ bottom of blaze, attached B.T. &  
"ATT" signs, & also painted 6" red band on each B.T.

Work Done By Danny L. Gon Title SURVEYOR Date 1/6/83 State Registration No. PLS 1028  
or Agency

Certified Cor. Record Prepared? Yes  No  Filed At: \_\_\_\_\_ Date \_\_\_\_\_

REMARKS

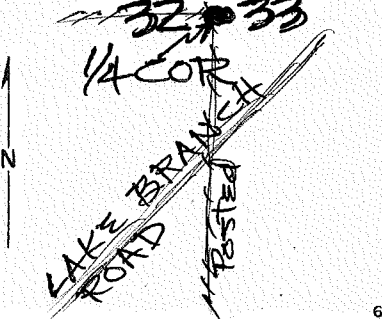
Index File No. X-9

**CORNER RECORD (SEARCH)**  
(Ref. FSM 7151.4)

Tract or Survey No. \_\_\_\_\_ Cor. No. \_\_\_\_\_

T IN R. SE R.D. Hood River County Hood River  
Merid. Willamette N.F. Mt Hood State ORE

**CORNER DIAGRAM**



**PHOTO IDENTIFICATION DATA**

Photo No. \_\_\_\_\_  
Filed At. \_\_\_\_\_  
Object Ident. \_\_\_\_\_  
Ident. By \_\_\_\_\_  
*Signature*

**PLANE COORDINATE POSITION DATA**

State \_\_\_\_\_ Zone \_\_\_\_\_  
X \_\_\_\_\_  
Y \_\_\_\_\_  
Estab. By \_\_\_\_\_  
*Agency*

**DESCRIBE CORNER MONUMENT FOUND**

\_\_\_\_\_

**DESCRIBE BEARING TREES OR OTHER OFFICIAL ACCESSORIES FOUND**

Found - 5' stump of 24" D.F. - N. 10° E. - 28.38' with scribe 1/45 - orig. B.T.  
Found - Rotted remains of 30" fir stump - S. 47° W - 7.92 - orig. B.T.

**DESCRIBE CORNER LOCATION RELATIVE TO NEAR-BY FEATURES, ALSO HOW TO REACH CORNER**

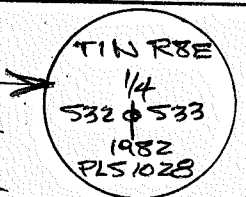
Get in vicinity going up Lake Branch Rd. - Will come to North/South posted line - Park - walk North up gentle slope ~ 600' to corner

*Signature* Danny [unclear] Title PLS 1028 Division \_\_\_\_\_ Headquarters \_\_\_\_\_ Date 1/6/83 FS-7100-52 (3/68)

**CORNER RECORD (PERPETUATION)**

MONUMENT: DESCRIBE NEW MONUMENT SET, OR WORK DONE TO PRESERVE EXISTING MONUMENT

set 2"x30" Aluminum Pipe with 3" Aluminum cap - set  
 ~ 24" in ground - cap stamped  
 set polymer post with 54-4 sign attached  
 " " " " 54-2a South Facing West  
 " " " " " " West " South



ACCESSORIES: DESCRIBE NEW BT'S WITNESS OBJECTS ETC. ESTABLISHED, OR WORK DONE TO PRESERVE EXISTING EVIDENCE

B.T.'s set.

5" D.F. - S. 60° E. - 15.3' - scribed "14533BT"

4" D.F. - N 40° W. - 6.3' - " " " 14532BT"

(5"x18" blaze @ base)

set brass disc stamped "LS 1028" @ bottom of blaze, attached B.T. &  
 "ATT" signs, & also painted 6" red band on each B.T.

Work Done By Danny L. Gron Title SURVEYOR Date 1/6/83 State Registration No. PLS 1028  
 or Agency

Certified Cor. Record Prepared? Yes  No  Filed At: \_\_\_\_\_

Date \_\_\_\_\_

REMARKS

Index File No.

T.

R.

M.

Tract or Surv. No.

Cor.

Index  
File No. Y-7

**CORNER RECORD (SEARCH)**

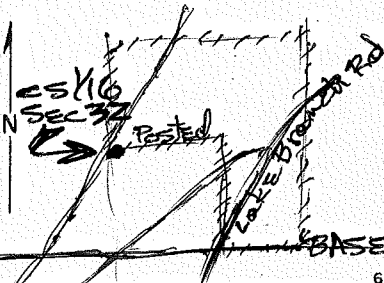
(Ref. FSM 7151.4)

Tract or  
Survey No. \_\_\_\_\_ Cor.  
No. \_\_\_\_\_

T IN R. SE R.D. Hood River County Hood River  
Merid. W.M. N.F. Mt Hood State ORE

CORNER DIAGRAM

DESCRIBE CORNER MONUMENT FOUND



DESCRIBE BEARING TREES OR OTHER OFFICIAL ACCESSORIES FOUND

PHOTO IDENTIFICATION DATA

Photo No. \_\_\_\_\_  
Filed At. \_\_\_\_\_  
Object Ident. \_\_\_\_\_  
Ident. By \_\_\_\_\_  
Signature \_\_\_\_\_

DESCRIBE CORNER LOCATION RELATIVE TO NEAR-BY FEATURES, ALSO HOW TO REACH CORNER

Going up Lake Branch Rd. take Rd. to right near SE 1/4 Sec 32, TIN, RSE (FS. RD# 1300690) go W 1.9 mi to posted line - Park - corner sets over bank N 60' - easily visible from Rd. -

PLANE COORDINATE POSITION DATA

State \_\_\_\_\_ Zone \_\_\_\_\_  
X \_\_\_\_\_  
Y \_\_\_\_\_  
Etab. By \_\_\_\_\_  
Agency \_\_\_\_\_

Signature Danny J. Cron Title PLS 1028 Division \_\_\_\_\_ Headquarters \_\_\_\_\_ Date 1/6/83





Index  
File No. V-8

**CORNER RECORD (SEARCH)**

(Ref. FSM 7151.4)

Tract or  
Survey No. \_\_\_\_\_ Cor.  
No. \_\_\_\_\_

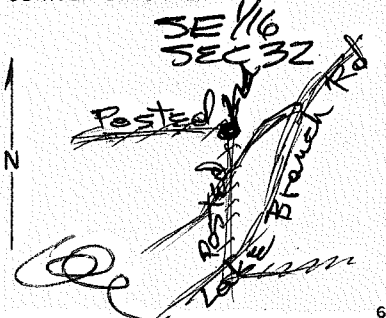
T 1N R. 8E

R.D. Hood River County Hood River

Merid. W.M.

N.F. Mt Hood State ORE

CORNER DIAGRAM



DESCRIBE CORNER MONUMENT FOUND

\_\_\_\_\_

DESCRIBE BEARING TREES OR OTHER OFFICIAL ACCESSORIES FOUND

\_\_\_\_\_

PHOTO IDENTIFICATION DATA

Photo No. \_\_\_\_\_  
Filed At. \_\_\_\_\_  
Object Ident. \_\_\_\_\_  
Ident. By \_\_\_\_\_  
Signature \_\_\_\_\_

DESCRIBE CORNER LOCATION RELATIVE TO NEAR-BY FEATURES, ALSO HOW TO REACH CORNER

Going up Lake Branch Rd. take Rd. to right near  
S.E. 1/6 Sec. 32, T1N, R8E. (F.S. Rd # 1300690) go ~  
0.1 mi. to posted line - Park - walk ~ 300'  
North ~~to~~ up over gentle ground to corner

PLANE COORDINATE POSITION DATA

State \_\_\_\_\_ Zone \_\_\_\_\_  
X \_\_\_\_\_  
Y \_\_\_\_\_  
Estab. By \_\_\_\_\_  
Agency \_\_\_\_\_

Signature \_\_\_\_\_ Title \_\_\_\_\_ Division \_\_\_\_\_ Headquarters \_\_\_\_\_ Date \_\_\_\_\_ FS-7100-52 (3/68)

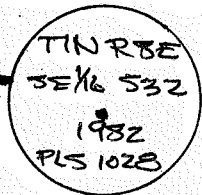
Danny G. G. PLS 1028 \_\_\_\_\_ 1/6/83

CORNER RECORD (PERPETUATION)

MONUMENT: DESCRIBE NEW MONUMENT SET, OR WORK DONE TO PRESERVE EXISTING MONUMENT

set 2 x 30 Aluminum Pipe with 3" Aluminum Cap - set  
24" in ground - Cap stamped

set polymer post with 54-9 sign attached  
" " " " 54-2a " South facing East  
" " " " " " West " North



ACCESSORIES : DESCRIBE NEW BT'S WITNESS OBJECTS ETC. ESTABLISHED, OR WORK DONE TO PRESERVE EXISTING EVIDENCE

BT's set:

6" D.F. - S. 37° E. - 20.1' - scribed "SE 1/4 532 BT" (5" x 18" blaze)  
6" D.F. - S. 20° W. - 28.4' " " " " SE 1/4 532 BT" @ Base

set brass disc stamped "PLS 1028" @ bottom of blaze, attached  
BT tag, "ATT" signs, & also painted 6" red band on each BT.

Work Done By: Danny L. Gon Title Surveyor Date 11/14/82 State Registration No. PLS 1028  
or Agency

Certified Cor. Record Prepared? Yes  No  Filed At: \_\_\_\_\_

REMARKS

Date \_\_\_\_\_

Index File No. \_\_\_\_\_

T. \_\_\_\_\_

R. \_\_\_\_\_

M. \_\_\_\_\_

Tract or Surv. No. \_\_\_\_\_

Cor. \_\_\_\_\_

CORNER RECORD (SEARCH)

(Ref. FSM 7151.4)

Tract or Survey No. \_\_\_\_\_

Cor. No. OK  
10/30

Index File No. Z-1 R8E

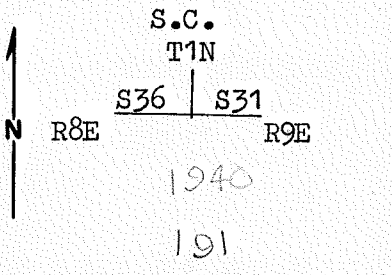
T 1N R. 9E

R.D. Hood River County Hood River

Merid. Willamette

N.F. Mt. Hood State Oregon

CORNER DIAGRAM



DESCRIBE CORNER MONUMENT FOUND

G.L.O. 3 1/2" Brass Cap on a 3" Steel Pipe. 2

DESCRIBE BEARING TREES OR OTHER OFFICIAL ACCESSORIES FOUND

Orig. 4" now down 18" D-Fir stump N42E-6.6' destroyed by road.  
Orig. 15" Fir N70E-22.6' destroyed by road.  
Remark 11" now 18" D-Fir N76W-54.9' obvious face.  
*RETAG & PAINT*

PHOTO IDENTIFICATION DATA

Photo No. \_\_\_\_\_  
Filed At. \_\_\_\_\_  
Object Ident. \_\_\_\_\_  
Ident. By \_\_\_\_\_  
*Signature*

DESCRIBE CORNER LOCATION RELATIVE TO NEAR-BY FEATURES, ALSO HOW TO REACH CORNER

Corner is located 6' from North edge of Road #S100B, 100 feet from its junction with Lost Lake Road, 5 feet East of barrier. 3

PLANE COORDINATE POSITION DATA

State \_\_\_\_\_ Zone \_\_\_\_\_  
X \_\_\_\_\_  
Y \_\_\_\_\_  
Estab. By \_\_\_\_\_  
*Agency*

Signature \_\_\_\_\_ Title \_\_\_\_\_ Division \_\_\_\_\_ Headquarters \_\_\_\_\_ Date \_\_\_\_\_ 4

Land Surveyor 7100-52-(3/68)  
8-80 5

*Lowry D. Bishop*

CORNER RECORD (PERPETUATION)

MONUMENT : DESCRIBE NEW MONUMENT SET, OR WORK DONE TO PRESERVE EXISTING MONUMENT

9

ACCESSORIES : DESCRIBE NEW BT'S WITNESS OBJECTS ETC. ESTABLISHED, OR WORK DONE TO PRESERVE EXISTING EVIDENCE

20" White Fir N10E-60.4 feet scribed T1N R9E S31 upper blaze and a lower blaze scribed BT and with a 3/4" Brass Disk stamped PLS 896.  
Guard post North with signs 54-2A & 54-4.  
BT signs and red paint on all BT's.

10

Work Done By Larry D. Bishop Title Surveyor Date 8-80 State Registration No. 896  
or Agency

Certified Cor. Record Prepared ? Yes No  Filed At: \_\_\_\_\_ Date \_\_\_\_\_ 11

REMARKS

Location tag on a 36" D-Fir N40W-30' from monument.

12

Index File No.

T.

R.

M.

Tract or Surv. No.

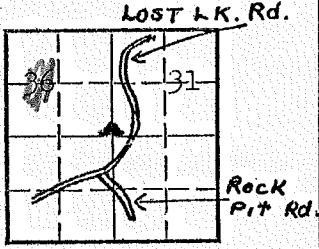
Cor.

U.S. G.P.O. 1977-725-576/586 13

LAND CORNER RECORD

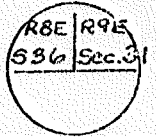
1. T~~12~~1N R~~9~~10E No. 2-1 Cor. Sec. Mer. WM State Oregon N. F. Mt. Hood Dist. Hood River

Owner Status SECS. 31, 36



3. Original Description \_\_\_\_\_ Vol. \_\_\_\_\_ Page \_\_\_\_\_ Where Recorded \_\_\_\_\_

4. Description of Corners: Corner consists of a brass tap & pipe in place. Good condition. Dimensions above ground 12". Iron pipe with brass cap seen by Harold Captain, March 1960. This was taken from Field Map Sheet, H.R. Co. Forest Resource Inventory records in timber dept.



7. Photo Identification  
Photo No. \_\_\_\_\_  
Ident. By: \_\_\_\_\_

5. Investigation Notes:

T1N, R9E	T1N, R8E
Sec. 31	Sec. 36
B.T.	B.T.

Species                      W.P.                      D. Fir  
 Diameter                    16"                        16"  
 Bearing                      N29°E                      N75°W  
 Distance                     40.3'                        59'

Believed to be a genuine Land Office Corner.

8. Plane Coordinate Position Data  
State \_\_\_\_\_ Zone \_\_\_\_\_  
X \_\_\_\_\_  
Y \_\_\_\_\_  
Estab. By \_\_\_\_\_  
Field Book No. \_\_\_\_\_  
Where Filed \_\_\_\_\_

9. Evaluation  
Authentic \_\_\_\_\_  
Needs Verif. Monument  
Re-estab. Survey  
Land Status \_\_\_\_\_

6. Signed J. D. Pedersen Title \_\_\_\_\_ Dist. Ass. c. Date 9/13/55

62

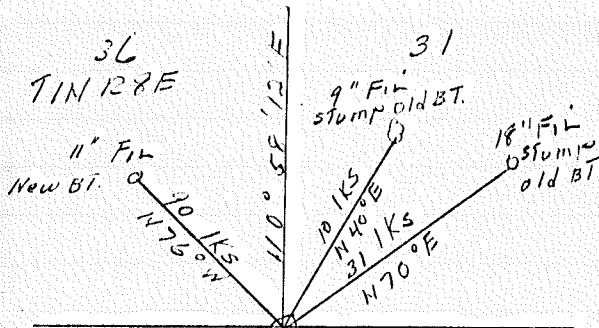
63

SECTION OR SUBDIVISION 31

CORNER No. .... 90 .....

TWP..... 111....., RANGE 8+9..... E, W.M.

CORNER DESCRIPTION



RP, white pine 1.15" dia bears  
N 29° E 62.1Ks (New BT. X 1940)

SW Cor Sec 31  
 fd Brass Disc Stamped  
 620 TIN  
 N 29° E  
 536/531  
 1940

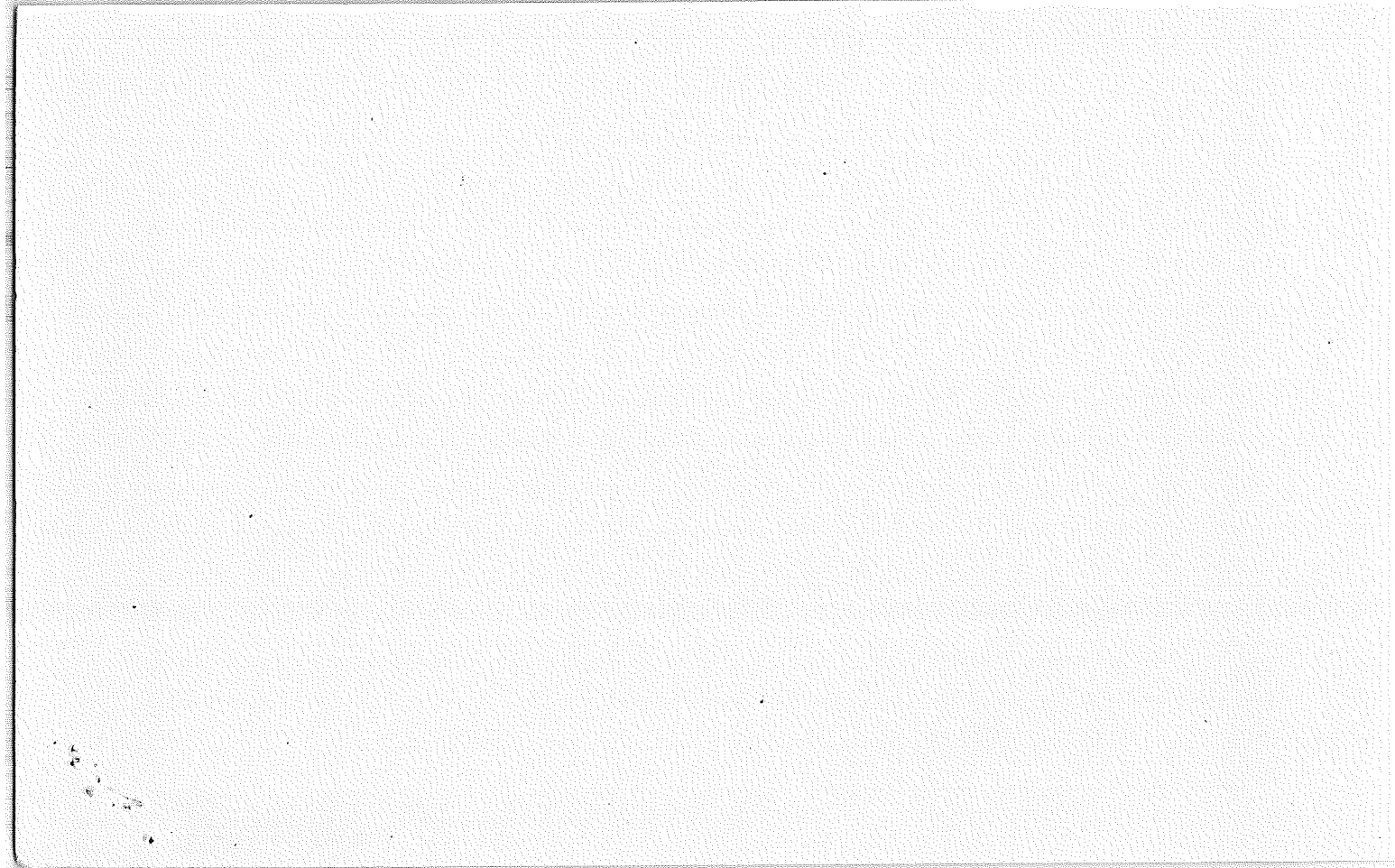
Y = 678, 324.64  
 X = 1,678, 181.81

W.O. REF. \_\_\_\_\_

Tennessee #3737 Cor 257  
 (see sketch on back)

CARD..... OF .....





Index File No. Z-7

**CORNER RECORD (SEARCH)**

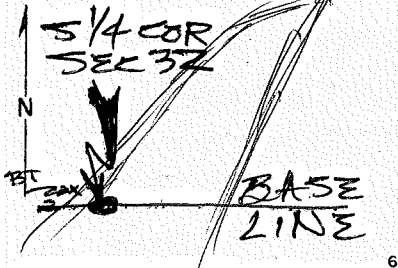
(Ref. FSM 7151.4)

Tract or Survey No. \_\_\_\_\_ Cor. No. \_\_\_\_\_

T IN R. SE  
Merid. Willamette

R.D. Hood River County Hood River  
N.F. Mt. Hood State ORE

**CORNER DIAGRAM**



**DESCRIBE CORNER MONUMENT FOUND**

1940 BLM. stamped Brass Cap

**DESCRIBE BEARING TREES OR OTHER OFFICIAL ACCESSORIES FOUND**

3' stump of 40" D.F. - B.T. - N. 38° W. - 64.68'

**PHOTO IDENTIFICATION DATA**

Photo No. \_\_\_\_\_  
Filed At. \_\_\_\_\_  
Object Ident. \_\_\_\_\_  
Ident. By \_\_\_\_\_  
*Signature*

**PLANE COORDINATE POSITION DATA**

State \_\_\_\_\_ Zone \_\_\_\_\_  
X \_\_\_\_\_  
Y \_\_\_\_\_  
Estab. By \_\_\_\_\_  
*Agency*

**DESCRIBE CORNER LOCATION RELATIVE TO NEAR-BY FEATURES, ALSO HOW TO REACH CORNER**

Going up Lake Branch Road - turn right onto F.S. Rd. # 1300690 - go w 3/8 mile - corner sets over road shoulder on left - note B.T.s on Rt. side of road - easily visible from Rd.

*Signature*  
Danny A. Coon

Title PLS 1028

Division \_\_\_\_\_

Headquarters \_\_\_\_\_

Date 1/6/83

CORNER RECORD (PERPETUATION)

MONUMENT: DESCRIBE NEW MONUMENT SET, OR WORK DONE TO PRESERVE EXISTING MONUMENT

set polymer post with 54-4 sign attached

ACCESSORIES : DESCRIBE NEW BT'S WITNESS OBJECTS ETC. ESTABLISHED, OR WORK DONE TO PRESERVE EXISTING EVIDENCE

B.T.'s set:

7" D.F. - N. 38° W. - 594' - scribed  $\frac{3}{4}$ " 532<sup>SC</sup> BT (5" x 18" Blaze @ base)

4" Noble - N. 29° E. - 141' - "  $\frac{3}{4}$ " 532<sup>SC</sup> BT

set brass disc stamped "L.S. 1028" @ bottom of blaze, attached BT  
 & "ATT" signs & also painted each BT

Work Done By Danny L. Crow Title Surveyor Date 1/6/83 State Registration No. PL51028  
 or Agency

Certified Cor. Record Prepared? Yes  No  Filed At:

Date

REMARKS

Index File No.

T.

R.

M.

Tract or Surv. No.

Cor.

12

13

Index  
File No. Z-8  
T IN R SE  
Merid. Willamette

CORNER RECORD (SEARCH)

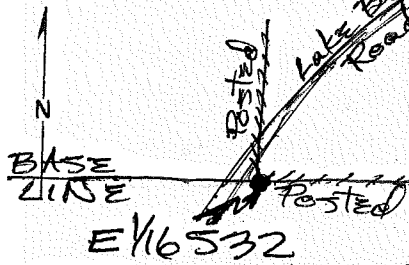
(Ref. FSM 7151.4)

R.D. Hood River County Hood River  
N.F. Mt. Hood State ORE.

Tract or  
Survey No. \_\_\_\_\_  
Cor.  
No. \_\_\_\_\_

CORNER DIAGRAM

DESCRIBE CORNER MONUMENT FOUND



DESCRIBE BEARING TREES OR OTHER OFFICIAL ACCESSORIES FOUND

PHOTO IDENTIFICATION DATA

Photo No. \_\_\_\_\_  
Filed At. \_\_\_\_\_  
Object Ident. \_\_\_\_\_  
Ident. By \_\_\_\_\_  
Signature \_\_\_\_\_

PLANE COORDINATE POSITION DATA

State \_\_\_\_\_ Zone \_\_\_\_\_  
X \_\_\_\_\_  
Y \_\_\_\_\_  
Estab. By \_\_\_\_\_  
Agency \_\_\_\_\_

DESCRIBE CORNER LOCATION, RELATIVE TO NEAR-BY FEATURES, ALSO HOW TO REACH CORNER

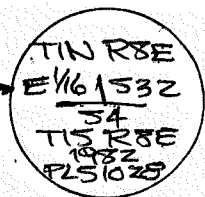
Get in vicinity going up Lake Branch Rd. -  
Will come to North/South Posted Line  
near Base Line - Park - walk South along  
Posted line ~ 250' to corner -

Signature Danny E. Coon Title PLS 1028 Division \_\_\_\_\_ Headquarters \_\_\_\_\_ Date 1/6/83

CORNER RECORD (PERPETUATION)

MONUMENT: DESCRIBE NEW MONUMENT SET, OR WORK DONE TO PRESERVE EXISTING MONUMENT

set 2"x30" Aluminum Pipe with 3 Aluminum Cap - set  
 w/24" in-ground - cap stamped  
 set polymer post with 54-9 sign attached  
 " " " " 54-2a " North Facing East  
 " " " " " " East " North



ACCESSORIES: DESCRIBE NEW B.T.'s WITNESS OBJECTS ETC. ESTABLISHED, OR WORK DONE TO PRESERVE EXISTING EVIDENCE

B.T.'s set:

6" Noble - N. 36° E. - 19.3' - scribed - "E1/6 532 BT" ← (5"x18" blaze @ base)  
 3" Hemlock - N. 64° W. - 47.1" - X @ eye ht & 5"x5" blaze with scribe "BT" @ base  
 set brass disc stamped "LS1028" @ bottom of blaze, attached BT & "ATT" tags, & also painted 6" red band on each B.T. -

Work Done By Danny L. Gon Title SURVEYST Date 11/14/82 State Registration No. PLS 1028  
 or Agency

Certified Cor. Record Prepared? Yes  No  Filed At: \_\_\_\_\_ Date \_\_\_\_\_

REMARKS

Index  
 File No. Z-9  
 T 1N R. 8E  
 Merid. Willamette

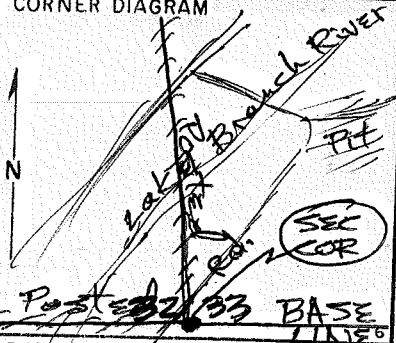
CORNER RECORD (SEARCH)

(Ref. FSM 7151.4)

Tract or Survey No. \_\_\_\_\_  
 R.D. Hood River County Hood River  
 N.F. Mt Hood State ORE

Cor. No. \_\_\_\_\_

CORNER DIAGRAM



DESCRIBE CORNER MONUMENT FOUND

1940 B.L.M. stamped Brass Cap

DESCRIBE BEARING TREES OR OTHER OFFICIAL ACCESSORIES FOUND

4' stump of orig. 14" Hemlock B.T. -  $N41^{\circ}E - 6.6'$   
 uprooted stump of 12" Hemlock -  $N.72^{\circ}W. - 9.9'$

PHOTO IDENTIFICATION DATA

Photo No. \_\_\_\_\_  
 Filed At. \_\_\_\_\_  
 Object Ident. \_\_\_\_\_  
 Ident. By \_\_\_\_\_  
 Signature \_\_\_\_\_

PLANE COORDINATE POSITION DATA

State \_\_\_\_\_ Zone \_\_\_\_\_  
 X \_\_\_\_\_  
 Y \_\_\_\_\_  
 Estab. By \_\_\_\_\_  
 Agency \_\_\_\_\_

DESCRIBE CORNER LOCATION RELATIVE TO NEAR-BY FEATURES, ALSO HOW TO REACH CORNER

Get in vicinity going up Lake Branch Rd -  
 turn left onto 1330000 to rock pit - turn  
 right onto 1330620 - go  $\frac{3}{8}$  mile E to posted  
 lines N/S & E/W - corner set W 50' East  
 of road near large lone tree - Visible  
 from Rd

Signature Danny Cron

Title PLS 1028 Division \_\_\_\_\_


Headquarters \_\_\_\_\_

Date 11/6/83

FS-7100-52 (3/68)

CORNER RECORD (PERPETUATION)

MONUMENT: DESCRIBE NEW MONUMENT SET, OR WORK DONE TO PRESERVE EXISTING MONUMENT


 set polymer post with 54-4 sign attached  
 " " " " 54-2a " North facing West  
 " " " " " " WEST " North

ACCESSORIES : DESCRIBE NEW BT'S WITNESS OBJECTS ETC. ESTABLISHED, OR WORK DONE TO PRESERVE EXISTING EVIDENCE

BT'S SET:

3 "D.F. - N.08°E - 31.7' - "X" at eye ht. & 5x5" blaze @ base with scribe BT"  
 3 "D.F. - N.16°W - 48.3' - " " " " " " " " " " " " " " "  
 set brass disc stamped 151028 @ bottom of blaze, attached BT  
 & "ATT" signs & also pointed all BT's including those fo.

Work Done By: Danny L. Gron Title Surveyor Date 1/6/83 State Registration No. PLS 1028  
 or Agency \_\_\_\_\_

Certified Cor. Record Prepared? Yes  No  Filed At: \_\_\_\_\_ Date \_\_\_\_\_

REMARKS

Index File No.

T.

R.

M.

Tract or Surv. No.

Cor.

12

13