

**LEGEND**

○ = Corner having information on form 7100-52 in this file.

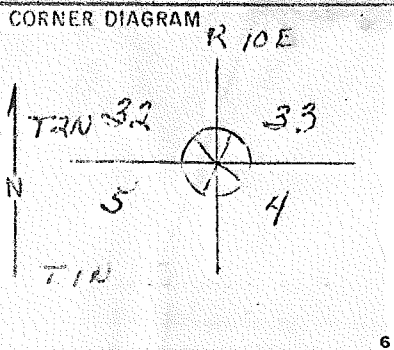
**FILING INSTRUCTION**

File 7100-52 card record by letter and number coordinates behind the file guide for the township in which it falls.

File the 7100-52 card record by letter and then by number i.e., all A cards first, then B cards etc.

The first card behind the file guide (if data have been obtained and recorded) will be card A-1 for N.W. Township Corner, then card A-2 for 1/16 corner then card A-3 for 1/4 corner etc.

File No. A-9 Survey No. \_\_\_\_\_ No. \_\_\_\_\_  
 T 1 & 2N R. 10E R.D. \_\_\_\_\_ County Hood River  
 Merid. WM N.F. Mt. Hood State Oregon



DESCRIBE CORNER MONUMENT FOUND  
 Oak stake in place. Good condition, 2x2x30" above ground.

DESCRIBE BEARING TREES OR OTHER OFFICIAL ACCESSORIES FOUND  
 Scribed E S on Oak 20" diameter bearing S75°W distance 125';  
 Burned over P.Pine 40" diameter bearing N60°W distance 200'. No  
 believed to be genuine corner. No marks but location probably  
 correct.

PHOTO IDENTIFICATION DATA  
 Photo No. \_\_\_\_\_  
 Filed At. \_\_\_\_\_  
 Object Ident. \_\_\_\_\_  
 Ident. By \_\_\_\_\_  
*Signature*

DESCRIBE CORNER LOCATION RELATIVE TO NEAR-BY FEATURES, ALSO HOW TO REACH CORNER  
 Section line marker between Secs. 32 and 33 is on a Oak tree on t  
 Kolas Road located 70 ft. North from Sec. Corner.

PLANE COORDINATE POSITION DATA  
 State \_\_\_\_\_ Zone \_\_\_\_\_  
 X \_\_\_\_\_  
 Y \_\_\_\_\_  
 Esch. By \_\_\_\_\_  
*Agency*

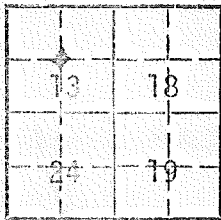
Signature Van B. Embree Title Guard Division \_\_\_\_\_ Headquarters \_\_\_\_\_ Date March 1, 1946  
 7100-52 REV. 65 5

LAND CORNER RECORD

5680-2

1. T. 1N R. 10E No. 1-23 Cor. Ctr - Mer. State Oregon N E Mt. Hood Nat'l. Dist. Hood River

2. Corner Status



3. Original Description \_\_\_\_\_ Vol. \_\_\_\_\_ Page \_\_\_\_\_ Where Recorded \_\_\_\_\_

4. Description of Corners:  
 Post 3" dia. ~ 3 ft. above ground,  
 B.T. 20" D. F. next to corner

5. Investigation Notes:

952' at 270° from U. S. Forest Service Boundary on N113A.

7. Photo Identification

Photo No. \_\_\_\_\_

Ident. By: \_\_\_\_\_

8. Plane Coordinate Position Data

State \_\_\_\_\_ Zone \_\_\_\_\_

X \_\_\_\_\_

Y \_\_\_\_\_

Estab. By \_\_\_\_\_

Field Book No. \_\_\_\_\_

Where Filed \_\_\_\_\_

9. Evaluation

Authentic \_\_\_\_\_

Needs Verif. \_\_\_\_\_ Monument \_\_\_\_\_

Re-estab. \_\_\_\_\_ Survey \_\_\_\_\_

Land Status \_\_\_\_\_

30

6. Signed L. Rector Title \_\_\_\_\_ Date 9/8/76  
J. McCullough

LAND CORNER RECORD

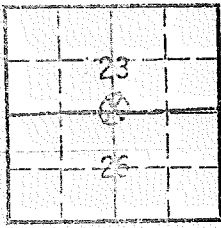
5680-2

1. T 1N R 10E No. R19 Cor. 1/4 Mer. Wm. State Oregon (Rectangular) N. F. Mt. Hood Dist. Hood River

2. Corner Status

1/4 cor.

A  
N  
I



3. Original Description Vol. Page Where Recorded

4. Description of Corners: Stake in place, poor condition. 3"x3"x24" above ground. 1/4 marked on N. side of stake. Mound of rocks around stake.

5. Investigation Notes:  
Doug. Fir 24" diameter bearing S12°W distance 11'. No other BT's. Area cut over and overgrown. Metal location poster is on a Doug Fir 24" snag.

1/4 Section Corner line marker is on a doug fir on the old Craft Road (Bald Butte Rd) located 1,077' east from Sec. Cor.

30

7. Photo Identification

Photo No. \_\_\_\_\_

Ident. By: \_\_\_\_\_

8. Plane Coordinate Position Data

State \_\_\_\_\_ Zone \_\_\_\_\_

X \_\_\_\_\_

Y \_\_\_\_\_

Estab. By \_\_\_\_\_

Field Book No. \_\_\_\_\_

Where Filed \_\_\_\_\_

9. Evaluation

Authentic \_\_\_\_\_

Needs Verif. \_\_\_\_\_ Monument \_\_\_\_\_

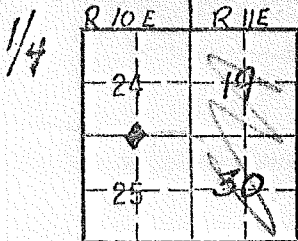
Re-estab. \_\_\_\_\_ Survey \_\_\_\_\_

Land Status \_\_\_\_\_

6. Signed Marietta Mihaesi Title Forestry Techs., Date 9/14/76

1. T 1N R 10E No R-23 Cor. 1/4 Mer. State Oregon (Rectangular) N. F. Mt. Hood Nat'l. Dist. Hood River

2. Corner Status



7. Photo Identification

Photo No. \_\_\_\_\_

Ident. By: \_\_\_\_\_

8. Plane Coordinate Position Data

State \_\_\_\_\_ Zone \_\_\_\_\_

X \_\_\_\_\_

Y \_\_\_\_\_

Estab. By \_\_\_\_\_

Field Book No. \_\_\_\_\_

Where Filed \_\_\_\_\_

9. Evaluation

Authentic \_\_\_\_\_

Needs Verif. \_\_\_\_\_ Monument \_\_\_\_\_

Re-estab. \_\_\_\_\_ Survey \_\_\_\_\_

Land Status \_\_\_\_\_

3. Original Description \_\_\_\_\_ Vol. \_\_\_\_\_ Page \_\_\_\_\_ Where Recorded \_\_\_\_\_

4. Description of Corners:

$1/4$  sec. cor. on 3" post 3' long laying on ground. Iron Fence stuck in ground 3' above ground.

5. Investigation Notes:

B.T. 18" D.F. with st. bd of Forest location sign blown down next to corner. 2 dead Doug. Firas 8" & 10" next to corner.

Corner is 1055' at 90° from U. S. Forest Service Boundary N.W. corner on old N107 Road.

3R

6. Signed J. McCullough Title \_\_\_\_\_ Date 9/8/76

FROM BPA DWG BIG EDDY-KEGLER 1

13 DEC 84

USDA-FOREST SERVICE GPO 940-117

CORNER RECORD (SEARCH)

(Ref. FSM 7151.4)

Tract or

Survey No.

Cor.

No.

Index  
File No.

T 1N R. 10E

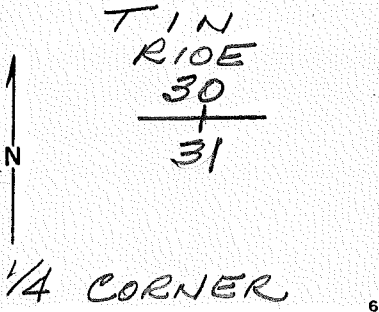
R.D. \_\_\_\_\_ County HOOD RIVER

Merid. W.M.

N.F. MT. HOOD State OREGON

V-3

CORNER DIAGRAM



DESCRIBE CORNER MONUMENT FOUND

1 1/2" IP & U.S.F.S. POST  
Y = 683 066.9  
X = 1713 209.2

DESCRIBE BEARING TREES OR OTHER OFFICIAL ACCESSORIES FOUND

PHOTO IDENTIFICATION DATA

Photo No. \_\_\_\_\_

Filed At. \_\_\_\_\_

Object Ident. \_\_\_\_\_

Ident. By \_\_\_\_\_

Signature

DESCRIBE CORNER LOCATION RELATIVE TO NEAR-BY FEATURES, ALSO HOW TO REACH CORNER

PLANE COORDINATE POSITION DATA

State \_\_\_\_\_ Zone \_\_\_\_\_

X \_\_\_\_\_

Y \_\_\_\_\_

Estab. By \_\_\_\_\_

Agency

Signature

Title

Division

Headquarters

Date

FS-7100-52 (3/68)

## CORNER RECORD (PERPETUATION)

MONUMENT : DESCRIBE NEW MONUMENT SET, OR WORK DONE TO PRESERVE EXISTING MONUMENT

9

ACCESSORIES : DESCRIBE NEW BT's WITNESS OBJECTS ETC. ESTABLISHED, OR WORK DONE TO PRESERVE EXISTING EVIDENCE

10

Work Done By \_\_\_\_\_ Title \_\_\_\_\_ Date \_\_\_\_\_ State Registration No.  
or Agency \_\_\_\_\_

Certified Cor. Record Prepared ? Yes No Filed At: \_\_\_\_\_ Date \_\_\_\_\_

11

REMARKS

12

Index File No. T. R. M. Tract or Surv. No. Cor.

13

FROM BPA DWG BIG EDDY-KEELER 1  
13 DEC 84

USDA-FOREST SERVICE GPO 940-117

Index File No. V-5

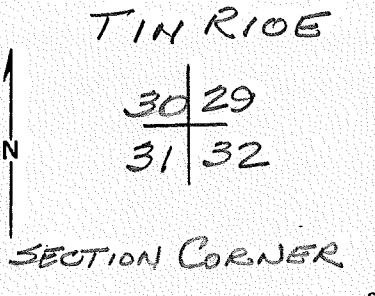
CORNER RECORD (SEARCH)  
(Ref. FSM 7151.4)

Tract or Survey No. \_\_\_\_\_  
Cor. No. V-5

T 1 N R. 10 E R.D. \_\_\_\_\_ County HOOD RIVER

Merid. W.M. N.F. MT. HOOD State OREGON

CORNER DIAGRAM



DESCRIBE CORNER MONUMENT FOUND

1" IP & 2 RPs  
Y = 682 939.0  
X = 1715873.8

SHEET 26 OF 82 2

DESCRIBE BEARING TREES OR OTHER OFFICIAL ACCESSORIES FOUND

PHOTO IDENTIFICATION DATA

Photo No. \_\_\_\_\_  
Filed At. \_\_\_\_\_  
Object Ident. \_\_\_\_\_  
Ident. By \_\_\_\_\_  
*Signature*

DESCRIBE CORNER LOCATION RELATIVE TO NEAR-BY FEATURES, ALSO HOW TO REACH CORNER 3

PLANE COORDINATE POSITION DATA

State \_\_\_\_\_ Zone \_\_\_\_\_  
X \_\_\_\_\_  
Y \_\_\_\_\_  
Estab. By \_\_\_\_\_  
*Agency*

Signature N. PHILLIPS Title \_\_\_\_\_ Division \_\_\_\_\_ Headquarters \_\_\_\_\_ Date 1998 FS-7100-52 (3/68)



## CORNER RECORD (PERPETUATION)

MONUMENT: DESCRIBE NEW MONUMENT SET, OR WORK DONE TO PRESERVE EXISTING MONUMENT

9

ACCESSORIES : DESCRIBE NEW BT'S WITNESS OBJECTS ETC. ESTABLISHED, OR WORK DONE TO PRESERVE EXISTING EVIDENCE

10

Work Done By \_\_\_\_\_ Title \_\_\_\_\_ Date \_\_\_\_\_ State Registration No.  
or Agency \_\_\_\_\_

Certified Cor. Record Prepared ? Yes No Filed At: \_\_\_\_\_ Date \_\_\_\_\_

REMARKS

12

Index File No. T. R. M. Tract or Surv. No. Cor. 13

FROM BPA DWG BIG EDDY-KEELER I  
13 DEC 84

Index  
File No. V-7

CORNER RECORD (SEARCH)  
(Ref. FSM 7151.4)

Tract or  
Survey No. \_\_\_\_\_  
Cor. No. V-7

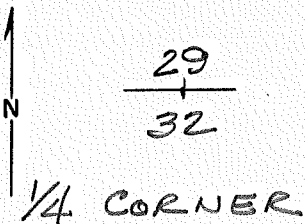
T 1N. R. 10E.

R.D. \_\_\_\_\_ County HOOD RIVER

Merid. WM

N.F. MT. HOOD State OREGON

CORNER DIAGRAM



DESCRIBE CORNER MONUMENT FOUND

1 1/4" IP 2 RPS  
Y=682825.0  
X=1718558.0

SHEET 25 OF 82

DESCRIBE BEARING TREES OR OTHER OFFICIAL ACCESSORIES FOUND

PHOTO IDENTIFICATION DATA

Photo No. \_\_\_\_\_  
Filed At. \_\_\_\_\_  
Object Ident. \_\_\_\_\_  
Ident. By \_\_\_\_\_  
*Signature*

DESCRIBE CORNER LOCATION RELATIVE TO NEAR-BY FEATURES, ALSO HOW TO REACH CORNER

PLANE COORDINATE POSITION DATA

State \_\_\_\_\_ Zone \_\_\_\_\_  
X \_\_\_\_\_  
Y \_\_\_\_\_  
Estab. By \_\_\_\_\_  
*Agency*

Signature

Title

Division

Headquarters

Date

FS-7100-52 (3/68)

**CORNER RECORD (PERPETUATION)**

**MONUMENT : DESCRIBE NEW MONUMENT SET, OR WORK DONE TO PRESERVE EXISTING MONUMENT**

9

**ACCESSORIES : DESCRIBE NEW BT'S WITNESS OBJECTS ETC. ESTABLISHED, OR WORK DONE TO PRESERVE EXISTING EVIDENCE**

10

**Work Done By** \_\_\_\_\_ **Title** \_\_\_\_\_ **Date** \_\_\_\_\_ **State Registration No.**  
**or Agency** \_\_\_\_\_

**Certified Cor. Record Prepared ?** Yes No **Filed At:** \_\_\_\_\_ **Date** \_\_\_\_\_ 11

**REMARKS**

12

**Index File No.**      **T.**      **R.**      **M.**      **Tract or Surv. No.**      **Cor.**      13

FROM BPA DWG BIG EDDY-KEELER 1

13 DEC 84

Index  
File No. V-9

CORNER RECORD (SEARCH)  
(Ref. FSM 7151.4)

Tract or  
Survey No. \_\_\_\_\_  
Cor. No. V-9

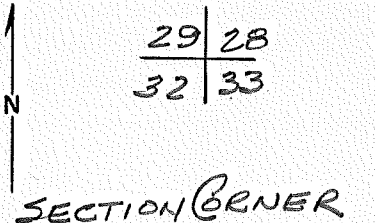
T 1 N. R. 10 E.

R.D. \_\_\_\_\_ County HOOD RIVER

Merid. W.M.

N.F. MT. HOOD State OREGON

CORNER DIAGRAM



DESCRIBE CORNER MONUMENT FOUND

1 1/4" IP & 3 RPS  
Y = 682817.8  
X = 1721300.2

SHEET 25 OF 82

DESCRIBE BEARING TREES OR OTHER OFFICIAL ACCESSORIES FOUND

PHOTO IDENTIFICATION DATA

Photo No. \_\_\_\_\_  
Filed At. \_\_\_\_\_  
Object Ident. \_\_\_\_\_  
Ident. By \_\_\_\_\_  
*Signature*

DESCRIBE CORNER LOCATION RELATIVE TO NEAR-BY FEATURES, ALSO HOW TO REACH CORNER

PLANE COORDINATE POSITION DATA

State \_\_\_\_\_ Zone \_\_\_\_\_  
X \_\_\_\_\_  
Y \_\_\_\_\_  
Estab. By \_\_\_\_\_  
*Agency*

Signature \_\_\_\_\_ Title \_\_\_\_\_ Division \_\_\_\_\_ Headquarters \_\_\_\_\_ Date \_\_\_\_\_ FS-7100-52 (3/68)



FROM BPA DWG BIG EDDY-KEELER 1  
30 OCT. 86

Index  
File No. V-13

CORNER RECORD (SEARCH)  
(Ref. FSM 7151.4)

Tract or  
Survey No. \_\_\_\_\_  
Cor. No. V-13

T IN R. 10E

R.D. \_\_\_\_\_ County HOOD RIVER

Merid. WM

N.F. MT. HOOD State OREGON

CORNER DIAGRAM

TIN	
R10E	
28	27
33	34



SECTION CORNER

DESCRIBE CORNER MONUMENT FOUND

IR IN CONC. MON.  
Y = 682 715.7  
X = 1726 601.8

SHEET 24 OF 82 2

DESCRIBE BEARING TREES OR OTHER OFFICIAL ACCESSORIES FOUND

PHOTO IDENTIFICATION DATA

Photo No. \_\_\_\_\_  
Filed At. \_\_\_\_\_  
Object Ident. \_\_\_\_\_  
Ident. By \_\_\_\_\_  
*Signature*

DESCRIBE CORNER LOCATION RELATIVE TO NEAR-BY FEATURES, ALSO HOW TO REACH CORNER

PLANE COORDINATE POSITION DATA

State \_\_\_\_\_ Zone \_\_\_\_\_  
X \_\_\_\_\_  
Y \_\_\_\_\_  
Estab. By \_\_\_\_\_  
*Agency*

Signature  
*N. Phillips*

Title \_\_\_\_\_ Division \_\_\_\_\_ Headquarters \_\_\_\_\_

Date 1978 FS-7100-52 (3/68)

## CORNER RECORD (PERPETUATION)

MONUMENT: DESCRIBE NEW MONUMENT SET, OR WORK DONE TO PRESERVE EXISTING MONUMENT

9

ACCESSORIES : DESCRIBE NEW BT'S WITNESS OBJECTS ETC. ESTABLISHED, OR WORK DONE TO PRESERVE EXISTING EVIDENCE

10

Work Done By \_\_\_\_\_ Title \_\_\_\_\_ Date \_\_\_\_\_ State Registration No.  
or Agency \_\_\_\_\_

Certified Cor. Record Prepared ? Yes No Filed At: \_\_\_\_\_ Date \_\_\_\_\_

11

REMARKS

12

Index File No. T. R. M. Tract or Surv. No. Cor. \_\_\_\_\_

13

FROM BPA DWG BIG EDDY-KEELER 1  
30 Oct 86

USDA-FOREST SERVICE GPO 940-117

CORNER RECORD (SEARCH)

Tract or  
Survey No.

Cor.  
No. V-15

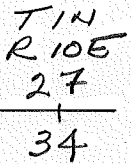
(Ref. FSM 7151.4)

Index  
File No. \_\_\_\_\_

T IN R. 10E R.D. \_\_\_\_\_ County HOOD RIVER

Merid. W.M. N.F. MT. HOOD State OREGON

CORNER DIAGRAM



$\frac{1}{4}$  CORNER

DESCRIBE CORNER MONUMENT FOUND

I.P. ?

DESCRIBE BEARING TREES OR OTHER OFFICIAL ACCESSORIES FOUND

PHOTO IDENTIFICATION DATA

Photo No. \_\_\_\_\_

Filed At. \_\_\_\_\_

Object Ident. \_\_\_\_\_

Ident. By \_\_\_\_\_

*Signature*

PLANE COORDINATE POSITION DATA

State \_\_\_\_\_ Zone \_\_\_\_\_

X \_\_\_\_\_

Y \_\_\_\_\_

Estab. By \_\_\_\_\_

*Agency*

Signature

Title

Division

Headquarters

Date

FS-7100-52 (3/68)



**CORNER RECORD (PERPETUATION)**

**MONUMENT : DESCRIBE NEW MONUMENT SET, OR WORK DONE TO PRESERVE EXISTING MONUMENT**

**9**

**ACCESSORIES : DESCRIBE NEW BT'S WITNESS OBJECTS ETC. ESTABLISHED, OR WORK DONE TO PRESERVE EXISTING EVIDENCE**

**10**

**Work Done By** \_\_\_\_\_ **Title** \_\_\_\_\_ **Date** \_\_\_\_\_ **State Registration No.**  
**or Agency** \_\_\_\_\_

**Certified Cor. Record Prepared ?** Yes No **Filed At:** \_\_\_\_\_ **Date** \_\_\_\_\_ **11**

**REMARKS**

**12**

**Index File No.**      **T.**      **R.**      **M.**      **Tract or Surv. No.**      **Cor,**      **13**

Index File No. V-21

CORNER RECORD (SEARCH)

(Ref. FSM 7151.4)

Tract or Survey No. \_\_\_\_\_ Cor. No. \_\_\_\_\_

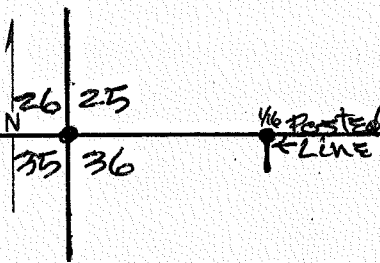
T. IN R. IDE

R.D. Hood River County Hood River

Merid. Willamette

N.F. Mt. Hood State ORE

CORNER DIAGRAM



DESCRIBE CORNER MONUMENT FOUND

old stake in mound of stone

DESCRIBE BEARING TREES OR OTHER OFFICIAL ACCESSORIES FOUND

30" D.F. orig. BT. (scar) - N.38°E. - 13.86'  
24" D.F. orig. BT (scar) - S 45°W - 16.6'  
18" fir orig. BT (down & rotted) - N.45°W - 37.62'

PHOTO IDENTIFICATION DATA

Photo No. \_\_\_\_\_  
 Filed At. \_\_\_\_\_  
 Object Ident. \_\_\_\_\_  
 Ident. By \_\_\_\_\_  
 Signature \_\_\_\_\_

PLANE COORDINATE POSITION DATA

State \_\_\_\_\_ Zone \_\_\_\_\_  
 X \_\_\_\_\_  
 Y \_\_\_\_\_  
 Estab. By \_\_\_\_\_  
 Agency \_\_\_\_\_

DESCRIBE CORNER LOCATION RELATIVE TO NEAR-BY FEATURES, ALSO HOW TO REACH CORNER

Find W/16 <sup>325</sup>/<sub>336</sub> & then compass pace West  
1/4 mile to corner -

Signature Danny L. Cron

Title PLS1028

Division \_\_\_\_\_

Headquarters \_\_\_\_\_

Date \_\_\_\_\_

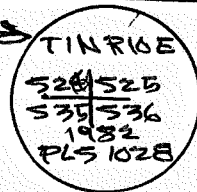
6/11/83

FS-7100-52 (3/68)

CORNER RECORD (PERPETUATION)

MONUMENT: DESCRIBE NEW MONUMENT SET, OR WORK DONE TO PRESERVE EXISTING MONUMENT

set 3 aluminum cap on 2 aluminum pipe - cap stamped  
 set orange polymer post with 54-4 sign attached



ACCESSORIES : DESCRIBE NEW BT'S WITNESS OBJECTS ETC. ESTABLISHED, OR WORK DONE TO PRESERVE EXISTING EVIDENCE

BT'S SET -

- 1) 5" W.F. - S. 10° E. - 27.2' - scribed - "TINRIOE 536 BT"
- 2) 15" D.F. - N. 80° W. - 27.4' - " " "TINRIOE 526 BT"

set brass disc stamped 151028 @ bottom of new b/pzes, attached "BT"  
 & "ATT" signs & also painted 6" red band on each BT's

Work Done By Danny L. Cron Title Surveyor Date 6/11/83 State Registration No. PLS 1028

Certified Cor. Record Prepared? Yes  No  Filed At:

REMARKS

Date

Index File No.

T.

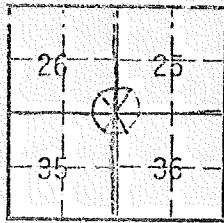
R.

M.

Tract or Surv. No.

1. T. 11N R. 10E No. V21 Cor. X Mer. \_\_\_\_\_ State Oregon (Rectangular) N. F. Mt. Hood Nat'l. Dist. Hood River

2. Corner Status \_\_\_\_\_



7. Photo Identification

Photo No. \_\_\_\_\_

Ident. By: \_\_\_\_\_

8. Plane Coordinate Position Data

State \_\_\_\_\_ Zone \_\_\_\_\_

X \_\_\_\_\_

Y \_\_\_\_\_

Estab. By \_\_\_\_\_

Field Book No. \_\_\_\_\_

Where Filed \_\_\_\_\_

9. Evaluation

Authentic \_\_\_\_\_

Needs Verif. \_\_\_\_\_ Monument \_\_\_\_\_

Re-estab. \_\_\_\_\_ Survey \_\_\_\_\_

Land Status \_\_\_\_\_

3. Original Description \_\_\_\_\_ Vol. \_\_\_\_\_ Page \_\_\_\_\_ Where Recorded \_\_\_\_\_

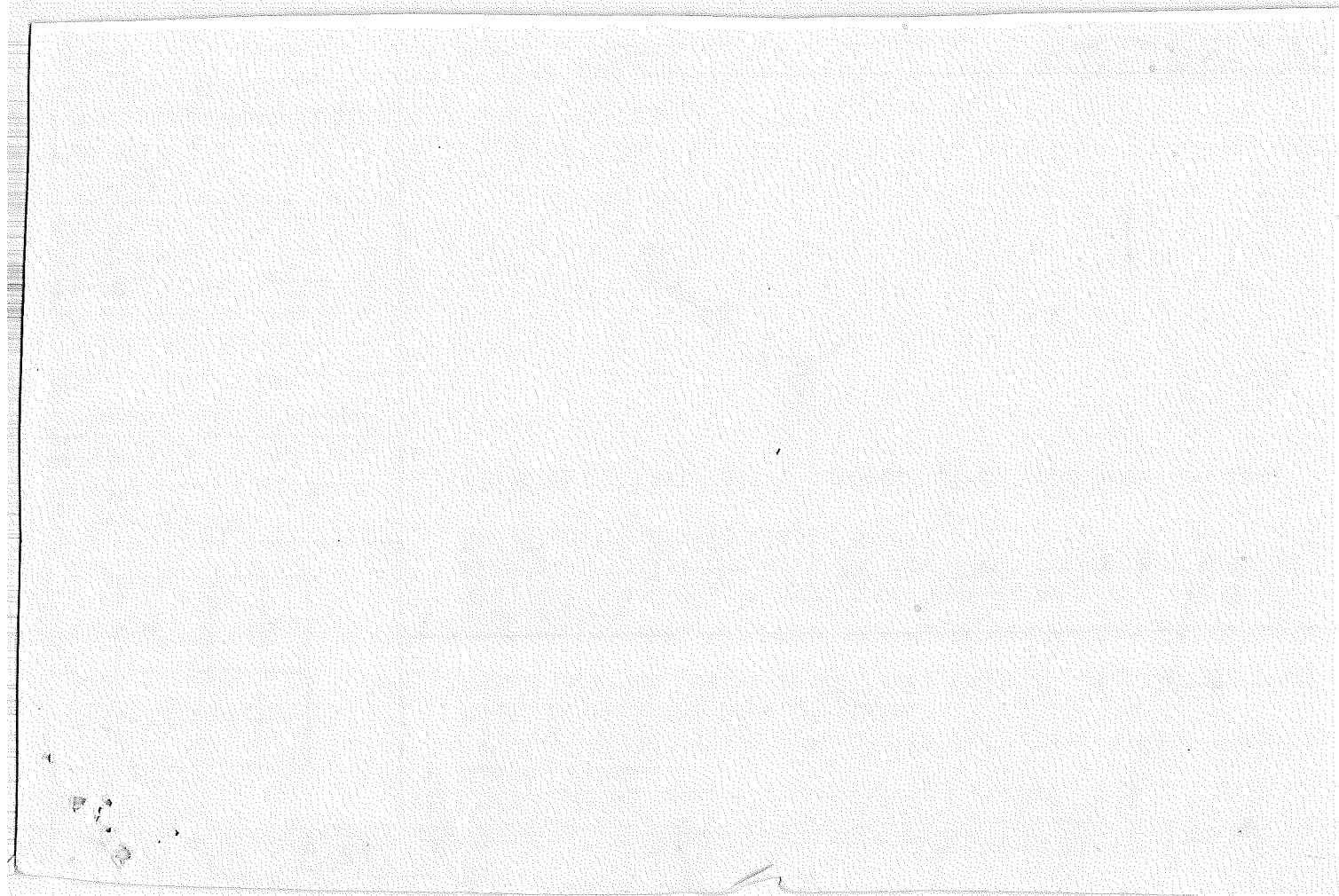
4. Description of Corners:  
Stake 3"x3"x36" above ground with red, white & Blue flagging.  
Mound of rocks at base of stake.  
Metal location poster on 10" D.F. snag 20' at a 360° bearing.

5. Investigation Notes:  
Red, White and Blue flagging on post at edge of road N-107.  
From post follow due west 270° for 1776' to corner section.  
Red flagging on old blazed trail.

(This is corner Section numbered 3T on land exchange map)

*3T & 3S*

6. Signed M. Mihacsi Title \_\_\_\_\_ Date 9/1/76



Index File No. V-22

CORNER RECORD (SEARCH)

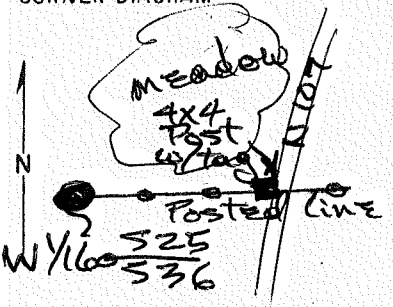
(Ref. FSM 7151.4)

Tract or Survey No. \_\_\_\_\_ Cor. No. \_\_\_\_\_

T IN R. 10E. R.D. Hood River County Hood River

Merid. Willamette N.F. Mt. Hood State ORE

CORNER DIAGRAM



DESCRIBE CORNER MONUMENT FOUND

\_\_\_\_\_

DESCRIBE BEARING TREES OR OTHER OFFICIAL ACCESSORIES FOUND

\_\_\_\_\_

PHOTO IDENTIFICATION DATA

Photo No. \_\_\_\_\_  
Filed At. \_\_\_\_\_  
Object Ident. \_\_\_\_\_  
Ident. By \_\_\_\_\_  
Signature \_\_\_\_\_

DESCRIBE CORNER LOCATION RELATIVE TO NEAR-BY FEATURES, ALSO HOW TO REACH CORNER

Find 4x4 post with BT tag on W. side of N107 - park - walk West along brushed & posted line 388' to corner

PLANE COORDINATE POSITION DATA

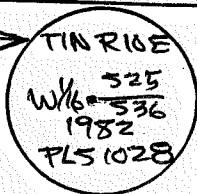
State \_\_\_\_\_ Zone \_\_\_\_\_  
X \_\_\_\_\_  
Y \_\_\_\_\_  
Estab. By \_\_\_\_\_  
Agency \_\_\_\_\_

Signature Danny J. Cron Title PLS 1028 Division \_\_\_\_\_ Headquarters \_\_\_\_\_ Date 6/1/83 FS-7100-52 (3/68)

CORNER RECORD (PERPETUATION)

MONUMENT: DESCRIBE NEW MONUMENT SET, OR WORK DONE TO PRESERVE EXISTING MONUMENT

set 3" aluminum cap on 2" al. pipe - cap stamped  
set orange polymer post with sign 549 attached



ACCESSORIES: DESCRIBE NEW BT'S WITNESS OBJECTS ETC. ESTABLISHED, OR WORK DONE TO PRESERVE EXISTING EVIDENCE

B.T.'s set -

1) 7" W.F. - N. 46° E. - 16.8' scribed "W/16525 BT"

2) 13" D.F. - S. 17° E. - 15.8' " " "W/16536 BT"

set brass disc stamped LS 1028 @ bottom of blaze, attached "BT"  
"ATT" signs & also painted 6" red band on each BT -

Work Done By Danny L. Crow Title Surveyor Date 6/11/83 State Registration No. PLS 1028  
or Agency

Certified Cor. Record Prepared? Yes  No  Filed At:

Date

REMARKS

Index File No.

T.

R.

M.

Tract or Surv. No.

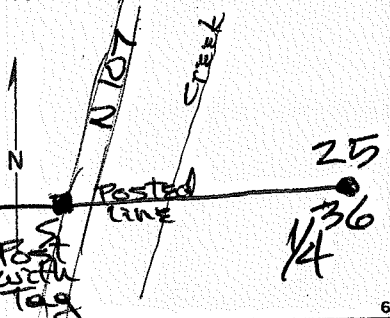
Index File No. V-23  
T 1N R. 10E  
Merid. Willamette

CORNER RECORD (SEARCH)  
(Ref. FSM 7151.4)

Tract or Survey No. \_\_\_\_\_  
Cor. No. \_\_\_\_\_

R.D. Hood River County Hood River  
N.F. Mt. Hood State OR

CORNER DIAGRAM



DESCRIBE CORNER MONUMENT FOUND

\_\_\_\_\_

PHOTO IDENTIFICATION DATA

Photo No. \_\_\_\_\_  
Filed At. \_\_\_\_\_  
Object Ident. \_\_\_\_\_  
Ident. By \_\_\_\_\_  
Signature \_\_\_\_\_

DESCRIBE BEARING TREES OR OTHER OFFICIAL ACCESSORIES FOUND

\_\_\_\_\_

PLANE COORDINATE POSITION DATA

State \_\_\_\_\_ Zone \_\_\_\_\_  
X \_\_\_\_\_  
Y \_\_\_\_\_  
Estab. By \_\_\_\_\_  
Agency \_\_\_\_\_

DESCRIBE CORNER LOCATION RELATIVE TO NEAR-BY FEATURES, ALSO HOW TO REACH CORNER

Find posted line @ N 107 - park - walk east along posted, brushed line to 1/4 corner

Signature Danny Cron Title PLS 1028 Division \_\_\_\_\_ Headquarters \_\_\_\_\_ Date 6/11/83  
FS-7100-52 (3/68)



CORNER RECORD (PERPETUATION)

MONUMENT: DESCRIBE NEW MONUMENT SET, OR WORK DONE TO PRESERVE EXISTING MONUMENT

Single Proportion Corner  
 set 3" aluminum cap on 2" aluminum pipe - cap stamped  
 set orange polymer post with 54-4 sign attached

TIN R 10E  
 1/4 • 325  
 1982  
 PLS 1028

ACCESSORIES: DESCRIBE NEW BT'S WITNESS OBJECTS ETC. ESTABLISHED, OR WORK DONE TO PRESERVE EXISTING EVIDENCE

B.T.'s set -

- 1) 10" D.F. - S33°E - 21.2' - scribed "14536 BT"
- 2) 17" D.F. - N32°W - 12.2' - " " "14525 BT"

set brass disc stamped 25 1028 @ bottom of blaze, attached "BT"  
 & "ATT" signs & also painted 6" red band on all B.T.'s

Work Done By Danny L. Cox Title Surveyor Date 6/1/83 State Registration No. PLS 1028  
 or Agency

Certified Cor. Record Prepared? Yes  No  Filed At: \_\_\_\_\_

REMARKS

Date \_\_\_\_\_

From BPA DWG BIG EDDY-K5566  
13 DEC 84

USDA-FOREST SERVICE GPO 940-117

Index File No. X-5

CORNER RECORD (SEARCH)  
(Ref. FSM 7151.4)

Tract or Survey No. \_\_\_\_\_  
Cor. No. X-5

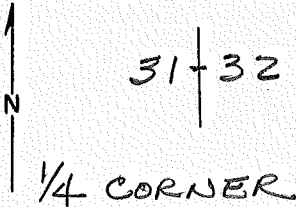
T 14 R. 10E

R.D. \_\_\_\_\_ County HOOD RIVER

Merid. W.M.

N.F. MT. HOOD State OREGON

CORNER DIAGRAM



DESCRIBE CORNER MONUMENT FOUND

⊕ CO. RD. ⊕ E-W FC  
Y=680252.9  
X=1745869.2

SHEET 26 OF 82

DESCRIBE BEARING TREES OR OTHER OFFICIAL ACCESSORIES FOUND

PHOTO IDENTIFICATION DATA

Photo No. \_\_\_\_\_  
Filed At. \_\_\_\_\_  
Object Ident. \_\_\_\_\_  
Ident. By \_\_\_\_\_  
*Signature*

DESCRIBE CORNER LOCATION RELATIVE TO NEAR-BY FEATURES, ALSO HOW TO REACH CORNER

PLANE COORDINATE POSITION DATA

State \_\_\_\_\_ Zone \_\_\_\_\_  
X \_\_\_\_\_  
Y \_\_\_\_\_  
Estab. By \_\_\_\_\_  
*Agency*

Signature \_\_\_\_\_ Title \_\_\_\_\_ Division \_\_\_\_\_ Headquarters \_\_\_\_\_ Date \_\_\_\_\_ FS-7100-52 (3/68)

**CORNER RECORD (PERPETUATION)**

**MONUMENT: DESCRIBE NEW MONUMENT SET, OR WORK DONE TO PRESERVE EXISTING MONUMENT**

9

**ACCESSORIES : DESCRIBE NEW BT'S WITNESS OBJECTS ETC. ESTABLISHED, OR WORK DONE TO PRESERVE EXISTING EVIDENCE**

10

**Work Done By** \_\_\_\_\_ **Title** \_\_\_\_\_ **Date** \_\_\_\_\_ **State Registration No. or Agency** \_\_\_\_\_

**Certified Cor. Record Prepared ?** Yes No **Filed At:** \_\_\_\_\_ **Date** \_\_\_\_\_ 11

**REMARKS**

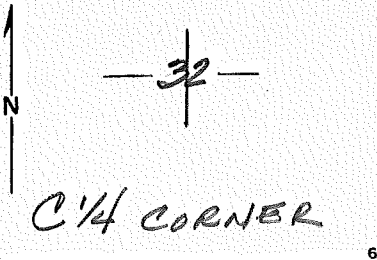
12

**Index File No.**      **T.**      **R.**      **M.**      **Tract or Surv. No.**      **Cor.**      13

From BPA DWG Big Eddy-Keeler 1  
13 Dec 84

Index File No. X-7  
 T IN R. 10E R.D. \_\_\_\_\_  
 Merid. W.M. N.F. MT. Hood County HOOD RIVER  
 CORNER RECORD (SEARCH) (Ref. FSM 7151.4) Tract or Survey No. \_\_\_\_\_ Cor. No. X-7  
 State OREGON

CORNER DIAGRAM



DESCRIBE CORNER MONUMENT FOUND

SHINER IN PAVEMENT  
 Y = 680175.9  
 X = 1718537.1

SHEET 25 OF 82 2

DESCRIBE BEARING TREES OR OTHER OFFICIAL ACCESSORIES FOUND

PHOTO IDENTIFICATION DATA

Photo No. \_\_\_\_\_  
 Filed At. \_\_\_\_\_  
 Object Ident. \_\_\_\_\_  
 Ident. By \_\_\_\_\_  
 Signature \_\_\_\_\_ 7

DESCRIBE CORNER LOCATION RELATIVE TO NEAR-BY FEATURES, ALSO HOW TO REACH CORNER

PLANE COORDINATE POSITION DATA

State \_\_\_\_\_ Zone \_\_\_\_\_  
 X \_\_\_\_\_  
 Y \_\_\_\_\_  
 Estab. By \_\_\_\_\_  
 Agency \_\_\_\_\_ 8

Signature \_\_\_\_\_ Title \_\_\_\_\_ Division \_\_\_\_\_ Headquarters \_\_\_\_\_ Date \_\_\_\_\_ FS-7100-52 (3/68) 4

**CORNER RECORD (PERPETUATION)**

**MONUMENT: DESCRIBE NEW MONUMENT SET, OR WORK DONE TO PRESERVE EXISTING MONUMENT**

9

**ACCESSORIES : DESCRIBE NEW BT's WITNESS OBJECTS ETC. ESTABLISHED, OR WORK DONE TO PRESERVE EXISTING EVIDENCE**

10

**Work Done By** \_\_\_\_\_ **Title** \_\_\_\_\_ **Date** \_\_\_\_\_ **State Registration No.**  
**or Agency** \_\_\_\_\_

**Certified Cor. Record Prepared ?** Yes No **Filed At:** \_\_\_\_\_ **Date** \_\_\_\_\_

11

**REMARKS**

12

**Index File No.**      **T.**      **R.**      **M.**      **Tract or Surv. No.**      **Cor.**      **13**

FROM BPA DWG BIG EDDY-KEESLER 1  
30 OCT. 86

USDA-FOREST SERVICE GPO 940-117

CORNER RECORD (SEARCH)

(Ref. FSM 7151.4)

Tract or

Survey No. \_\_\_\_\_

Cor.

No. X-11

Index  
File No. \_\_\_\_\_

T IN R. 10E.

R.D. \_\_\_\_\_

County

HOOD RIVER

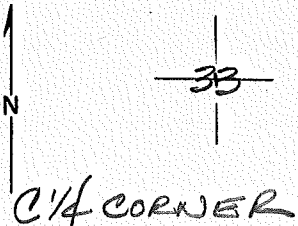
Merid. W.M.

N.F. MT. Hood

State

OREGON

CORNER DIAGRAM



DESCRIBE CORNER MONUMENT FOUND

3/4" IP, # 1 BT, MKD STONE  
Y=680 529.3  
X=1723 908.9

DESCRIBE BEARING TREES OR OTHER OFFICIAL ACCESSORIES FOUND

PHOTO IDENTIFICATION DATA

Photo No. \_\_\_\_\_

Filed At. \_\_\_\_\_

Object Ident. \_\_\_\_\_

Ident. By \_\_\_\_\_

Signature

PLANE COORDINATE POSITION DATA

State \_\_\_\_\_ Zone \_\_\_\_\_

X \_\_\_\_\_

Y \_\_\_\_\_

Estab. By \_\_\_\_\_

Agency

Signature

Title

Division

Headquarters

Date

FS-7100-52 (3/68)

**CORNER RECORD (PERPETUATION)**

**MONUMENT : DESCRIBE NEW MONUMENT SET, OR WORK DONE TO PRESERVE EXISTING MONUMENT**

9

**ACCESSORIES : DESCRIBE NEW BT'S WITNESS OBJECTS ETC. ESTABLISHED, OR WORK DONE TO PRESERVE EXISTING EVIDENCE**

10

**Work Done By** \_\_\_\_\_ **Title** \_\_\_\_\_ **Date** \_\_\_\_\_ **State Registration No.**  
**or Agency** \_\_\_\_\_

**Certified Cor. Record Prepared ?** Yes No **Filed At:** \_\_\_\_\_ **Date** \_\_\_\_\_ 11

**REMARKS**

12

**Index File No.**      **T.**      **R.**      **M.**      **Tract or Surv. No.**      **Cor.**      13

From BPA DWG BIG EDDY - KEELER 1  
30 OCT 86

USDA-FOREST SERVICE GPO 940-117

Index File No. X-13

CORNER RECORD (SEARCH)  
(Ref. FSM 7151.4)

Tract or Survey No. \_\_\_\_\_  
Cor. No. X-13

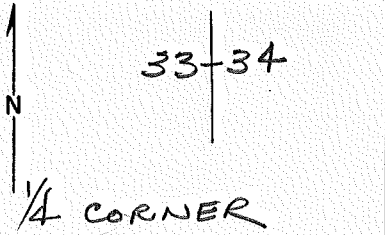
T 1N R. 10E

R.D. \_\_\_\_\_ County HOOD RIVER

Merid. WM

N.F. MT. HOOD State OREGON

CORNER DIAGRAM



DESCRIBE CORNER MONUMENT FOUND

2" I.P. 1 R.P.  
Y 680 104.9  
X 1726 568.6

SHEET 24 OF 82 2

DESCRIBE BEARING TREES OR OTHER OFFICIAL ACCESSORIES FOUND

PHOTO IDENTIFICATION DATA

Photo No. \_\_\_\_\_  
Filed At. \_\_\_\_\_  
Object Ident. \_\_\_\_\_  
Ident. By \_\_\_\_\_  
*Signature*

DESCRIBE CORNER LOCATION RELATIVE TO NEAR-BY FEATURES, ALSO HOW TO REACH CORNER

PLANE COORDINATE POSITION DATA

State \_\_\_\_\_ Zone \_\_\_\_\_  
X \_\_\_\_\_  
Y \_\_\_\_\_  
Estab. By \_\_\_\_\_  
*Agency*

Signature

Title

Division

Headquarters

Date

FS-7100-52 (3/68)





FROM BPA DWG BIG EDDY-KEELER I

13 DEC 84

Index  
File No. 29

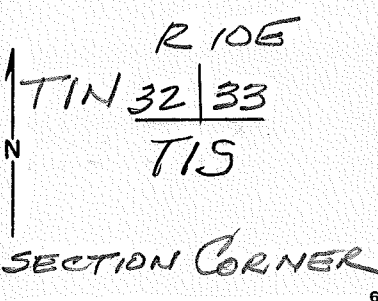
CORNER RECORD (SEARCH)  
(Ref. FSM 7151.4)

Tract or  
Survey No. \_\_\_\_\_  
Cor. No. 2-9

T 1N. R. 10E. R.D. \_\_\_\_\_  
Merid. W.M.

County HOOD RIVER  
N.F. MT. HOOD State OREGON

CORNER DIAGRAM



DESCRIBE CORNER MONUMENT FOUND

INTERSECTION 6 RD N & HWY 30 E-W  
Y = 677469.8  
X = 1721227.4

- SHEET 25 OF 82

DESCRIBE BEARING TREES OR OTHER OFFICIAL ACCESSORIES FOUND

PHOTO IDENTIFICATION DATA

Photo No. \_\_\_\_\_  
Filed At. \_\_\_\_\_  
Object Ident. \_\_\_\_\_  
Ident. By \_\_\_\_\_  
*Signature*

DESCRIBE CORNER LOCATION RELATIVE TO NEAR-BY FEATURES, ALSO HOW TO REACH CORNER

PLANE COORDINATE POSITION DATA

State \_\_\_\_\_ Zone \_\_\_\_\_  
X \_\_\_\_\_  
Y \_\_\_\_\_  
Estab. By \_\_\_\_\_  
*Agency*

## CORNER RECORD (PERPETUATION)

MONUMENT: DESCRIBE NEW MONUMENT SET, OR WORK DONE TO PRESERVE EXISTING MONUMENT

9

ACCESSORIES : DESCRIBE NEW BT's WITNESS OBJECTS ETC. ESTABLISHED, OR WORK DONE TO PRESERVE EXISTING EVIDENCE

10

Work Done By \_\_\_\_\_ Title \_\_\_\_\_ Date \_\_\_\_\_ State Registration No.  
or Agency \_\_\_\_\_

Certified Cor. Record Prepared ? Yes No Filed At: \_\_\_\_\_ Date \_\_\_\_\_ 11

REMARKS

12

Index File No. T. R. M. Tract or Surv. No. Cor. 13

Index  
File No. Z-13

T 1N R. 10E R.D. \_\_\_\_\_

Merid. W.M. N.F. \_\_\_\_\_

CORNER RECORD (SEARCH)  
(Ref. FSM 7151.4)

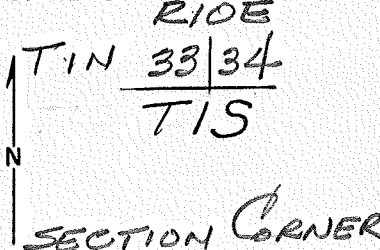
Tract or  
Survey No. \_\_\_\_\_  
Cor. No. Z-13

County HOOD RIVER

State OREGON

FROM BPA DWG BIG EDDY-KEELER 1  
30 OCT 86

CORNER DIAGRAM



DESCRIBE CORNER MONUMENT FOUND

BRASS CAP 2 BT'S  
Y = 677434.2  
X = 1726576.1

SHEET 24 OF 82 2

DESCRIBE BEARING TREES OR OTHER OFFICIAL ACCESSORIES FOUND

PHOTO IDENTIFICATION DATA

Photo No. \_\_\_\_\_  
Filed At. \_\_\_\_\_  
Object Ident. \_\_\_\_\_  
Ident. By \_\_\_\_\_  
*Signature*

DESCRIBE CORNER LOCATION RELATIVE TO NEAR-BY FEATURES, ALSO HOW TO REACH CORNER

PLANE COORDINATE POSITION DATA

State \_\_\_\_\_ Zone \_\_\_\_\_  
X \_\_\_\_\_  
Y \_\_\_\_\_  
Estab. By \_\_\_\_\_  
*Agency*

Signature \_\_\_\_\_ Title \_\_\_\_\_ Division \_\_\_\_\_ Headquarters \_\_\_\_\_ Date \_\_\_\_\_ FS-7100-52 (3/68)

**CORNER RECORD (PERPETUATION)**

**MONUMENT : DESCRIBE NEW MONUMENT SET, OR WORK DONE TO PRESERVE EXISTING MONUMENT**

9

**ACCESSORIES : DESCRIBE NEW BT'S WITNESS OBJECTS ETC. ESTABLISHED, OR WORK DONE TO PRESERVE EXISTING EVIDENCE**

10

**Work Done By** \_\_\_\_\_ **Title** \_\_\_\_\_ **Date** \_\_\_\_\_ **State Registration No. or Agency** \_\_\_\_\_

**Certified Cor. Record Prepared ?** Yes No **Filed At:** \_\_\_\_\_ **Date** \_\_\_\_\_ 11

**REMARKS**

12

**Index File No.**      **T.**      **R.**      **M.**      **Tract or Surv. No.**      **Cor.**      13

Index File No. X-25

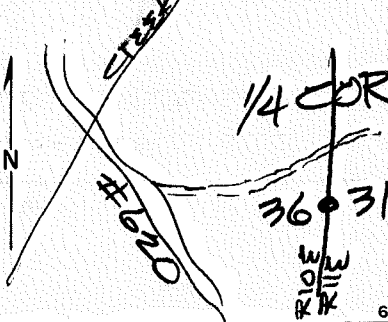
CORNER RECORD (SEARCH)

(Ref. FSM 7151.4)

Tract or Survey No. \_\_\_\_\_ Cor. No. 1/4

T 1N R. 10E R.D. Hood River County Hood River  
 Merid. Willamette N.F. Mt Hood State ORE

CORNER DIAGRAM



DESCRIBE CORNER MONUMENT FOUND

**NOT FOUND**  
 OLD, OLD BT TAG.  
 Pile of rocks  $\approx$  S 40W  $\approx$  70'

DESCRIBE BEARING TREES OR OTHER OFFICIAL ACCESSORIES FOUND

Cut into large DF STUMP

PHOTO IDENTIFICATION DATA

Photo No. \_\_\_\_\_  
 Filed At. \_\_\_\_\_  
 Object Ident. \_\_\_\_\_  
 Ident. By \_\_\_\_\_  
 Signature \_\_\_\_\_

DESCRIBE CORNER LOCATION RELATIVE TO NEAR-BY FEATURES, ALSO HOW TO REACH CORNER

Find old spur road off rd. #620 just past drainage thru center of S. 36 - go 1/4 mi  $\pm$  corner is  $\approx$  120' south of rd. in thinned timber

PLANE COORDINATE POSITION DATA

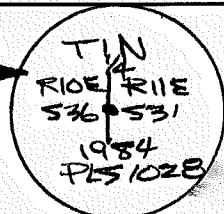
State \_\_\_\_\_ Zone \_\_\_\_\_  
 X \_\_\_\_\_  
 Y \_\_\_\_\_  
 Estab. By \_\_\_\_\_  
 Agency \_\_\_\_\_

Signature [Signature] Title PLS 1028 Division \_\_\_\_\_ Headquarters \_\_\_\_\_ Date 12/12/84 7100-52 (3/68)

CORNER RECORD (PERPETUATION)

MONUMENT: DESCRIBE NEW MONUMENT SET, OR WORK DONE TO PRESERVE EXISTING MONUMENT

set 2" x 30" al. pipe with 3" al. cap stamped  
 set orange post with sign attached  
 warning against destroying -



9

ACCESSORIES : DESCRIBE NEW BT'S WITNESS OBJECTS ETC. ESTABLISHED, OR WORK DONE TO PRESERVE EXISTING EVIDENCE

BT's set -

14" D.F. - S. 32° W. - 17.9' - scribed "14536 BT"  
 17" D.F. - N 45° E. - 11.1' - " " "14531 BT"

set BT + ATT signs + 6" red band on BTs, also set  
 brass disc stamped "PLS 1028" @ bottom of blaze -

10

Work Done By Dan Cron Title Surveyor Date 12/12/84 State Registration No. PLS 1028  
 or Agency \_\_\_\_\_

Certified Cor. Record Prepared? Yes  No  Filed At: \_\_\_\_\_ Date \_\_\_\_\_

11

REMARKS

12

Index File No. T. R. M. Tract or Surv. No. Cor. 13

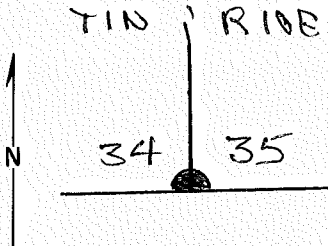
Index  
 File No. Z-17  
 T 1 N 10 E R. D. \_\_\_\_\_  
 Merid. WM. N.F. Mt. Hood State Oregon

**CORNER RECORD (SEARCH)**  
 (Ref. FSM 7151.4)

Tract or  
 Survey No. \_\_\_\_\_  
 Co. \_\_\_\_\_ No. \_\_\_\_\_

CONTROL CORNER

CORNER DIAGRAM



DESCRIBE CORNER MONUMENT FOUND

SEE REVERSE

DESCRIBE BEARING TREES OR OTHER OFFICIAL ACCESSORIES FOUND

PHOTO IDENTIFICATION DATA

Photo No. \_\_\_\_\_  
 Filed At. \_\_\_\_\_  
 Object Ident. \_\_\_\_\_  
 Ident. By \_\_\_\_\_  
*Signature*

DESCRIBE CORNER LOCATION RELATIVE TO NEAR-BY FEATURES, ALSO HOW TO REACH CORNER

PLANE COORDINATE POSITION DATA

State \_\_\_\_\_ Zone \_\_\_\_\_  
 X \_\_\_\_\_  
 Y \_\_\_\_\_  
 Estab. By \_\_\_\_\_  
*Agency*

Signature

Title

Division

Headquarters

Date

7100-52 (3/68)



**CORNER RECORD (PERPETUATION)**

MONUMENT: DESCRIBE NEW MONUMENT SET, OR WORK DONE TO PRESERVE EXISTING MONUMENT

set an iron post, 28 ins. long, 2 1/2 ins.  
diam., 24 ins. in the ground, with brass cap  
mdk.

S C

T 1 N R 10 E

S 34 | S 35

1975

9

ACCESSORIES : DESCRIBE NEW BT'S WITNESS OBJECTS ETC. ESTABLISHED, OR WORK DONE TO PRESERVE EXISTING EVIDENCE

A white oak, 10 ins. diam. bears N. 72° E.,  
27 1/2 lks. dist., mkd. T 1 N R 10 E S 35  
SC BT.

10

Work Done By: Barrett Title: Surveyor Date: 6/75 State Registration No. BLM  
or Agency

Certified Cor. Record Prepared? Yes  No  Filed At: \_\_\_\_\_ Date \_\_\_\_\_ 11

REMARKS

12

Index File No. T. R. M. Tract or Surv. No. Cor. 13

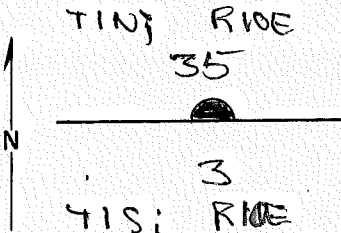
Index  
File No. Z-19

**CORNER RECORD (SEARCH)**  
(Ref. FSM 7151.4)

Tract or  
Survey No. \_\_\_\_\_  
CONTROL CORNER  
Cor. No. \_\_\_\_\_

T 10 N R. 10 E R.D. \_\_\_\_\_ County Hood River  
Merid. Wm. N.F. Mt. Hood State Oregon

CORNER DIAGRAM



DESCRIBE CORNER MONUMENT FOUND

SEE REVERSE

DESCRIBE BEARING TREES OR OTHER OFFICIAL ACCESSORIES FOUND

PHOTO IDENTIFICATION DATA

Photo No. \_\_\_\_\_  
Filed At. \_\_\_\_\_  
Object Ident. \_\_\_\_\_  
Ident. By \_\_\_\_\_  
*Signature*

DESCRIBE CORNER LOCATION RELATIVE TO NEAR-BY FEATURES, ALSO HOW TO REACH CORNER

PLANE COORDINATE POSITION DATA

State \_\_\_\_\_ Zone \_\_\_\_\_  
X \_\_\_\_\_  
Y \_\_\_\_\_  
Estab. By \_\_\_\_\_  
*Agency*

Signature

Title

Division

Headquarters

Date

7100-52 (3/68)

CORNER RECORD (PERPETUATION)

MONUMENT: DESCRIBE NEW MONUMENT SET, OR WORK DONE TO PRESERVE EXISTING MONUMENT

Set an iron post 28 ins. long,  
 2 1/2 ins. diam., 24 ins. in the ground,  
 in 2 mound of stone, 2 1/2 ft. base, to  
 top, with brass cap mks., directly over  
 iron pipe.

SC  
 T1N            R10 E  
1/4 S 35  
 1975

9

ACCESSORIES : DESCRIBE NEW BT'S WITNESS OBJECTS ETC. ESTABLISHED, OR WORK DONE TO PRESERVE EXISTING EVIDENCE

A fir, 10 ins. diam, bears N. 61° E., 36 lks. dist.,  
 mkd. X BT.

A fir 10 ins. diam., bears N. 31° W., 33 lks. dist.,  
 mks. 1/4 S35 SC BT.

10

Work Done By Barrett Title Sur. Date 6-75 State Registration No. B.L.M.  
 or Agency

Certified Cor. Record Prepared ? Yes    No    Filed At: \_\_\_\_\_ Date \_\_\_\_\_ 11

REMARKS

12

Index File No.            T.            R.            M.            Tract or Surv. No.            Cor.            13

Index  
File No. Z-23

CORNER RECORD (SEARCH)

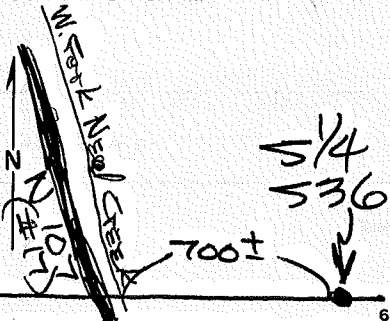
(Ref. FSM 7151.4)

Tract or Survey No. \_\_\_\_\_ Cor. No. 14

T 1N R. 10E R.D. Hood River County Hood River  
Merid. Willamette N.F. Mt Hood State ORE

CORNER DIAGRAM

DESCRIBE CORNER MONUMENT FOUND



Found Mk'd Stone

DESCRIBE BEARING TREES OR OTHER OFFICIAL ACCESSORIES FOUND

original 1859 B.T. Stumps -  
15' D.F. - N. 33° W. - 11.22' - healed face  
20' D.F. - N. 25° E. - 13.2' - " "

PHOTO IDENTIFICATION DATA

Photo No. \_\_\_\_\_  
Filed At. \_\_\_\_\_  
Object Ident. \_\_\_\_\_  
Ident. By \_\_\_\_\_  
Signature \_\_\_\_\_

PLANE COORDINATE POSITION DATA

State \_\_\_\_\_ Zone \_\_\_\_\_  
X \_\_\_\_\_  
Y \_\_\_\_\_  
Estab. By \_\_\_\_\_  
Agency \_\_\_\_\_

DESCRIBE CORNER LOCATION RELATIVE TO NEAR-BY FEATURES, ALSO HOW TO REACH CORNER

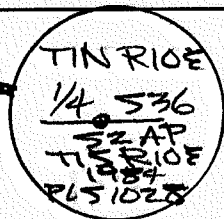
corner sets on flat ground - 120'± East of ridge top

Signature [Signature] Title #651028 Division \_\_\_\_\_ Headquarters \_\_\_\_\_ Date 12/12/84 7100-52 (3/68)

CORNER RECORD (PERPETUATION)

MONUMENT: DESCRIBE NEW MONUMENT SET, OR WORK DONE TO PRESERVE EXISTING MONUMENT

set 2"x30" al. pipe with 3" al. cap stamped  
 set orange post with sign attached  
 warning against destroying -



ACCESSORIES: DESCRIBE NEW BT'S WITNESS OBJECTS ETC. ESTABLISHED, OR WORK DONE TO PRESERVE EXISTING EVIDENCE

BT's set -

8" W.F. - N. 62° E. - 16.8' scribed "1/4 536 BT"

9" W.F. - WEST - 16.2' "

set BT + ATT signs + 6" red sand on BTs also set  
 brass disc stamped "251028" @ bottom of blaze -

Work Done By: Dan Cron Title: Surveyor Date: 12/12/84 State Registration No. PL51028  
 or Agency

Certified Cor. Record Prepared? Yes  No  Filed At: \_\_\_\_\_ Date: \_\_\_\_\_

REMARKS

Index  
File No. Z-25

CORNER RECORD (SEARCH)

(Ref. FSM 7151.4)

Tract or  
Survey No. \_\_\_\_\_

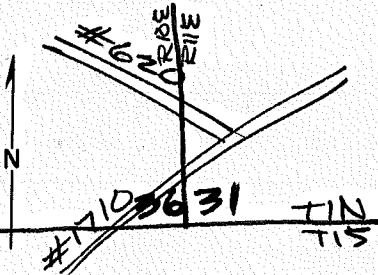
Cor. SC  
No. TWP

T IN R. 10E  
Merid. Willamette

R.D. Hood River County Hood River  
N.F. Mt Hood State ORE

CORNER DIAGRAM

DESCRIBE CORNER MONUMENT FOUND



Not Found

DESCRIBE BEARING TREES OR OTHER OFFICIAL ACCESSORIES FOUND

PHOTO IDENTIFICATION DATA

Photo No. \_\_\_\_\_  
Filed At. \_\_\_\_\_  
Object Ident. \_\_\_\_\_  
Ident. By \_\_\_\_\_  
*Signature*

DESCRIBE CORNER LOCATION RELATIVE TO NEAR-BY FEATURES, ALSO HOW TO REACH CORNER

~100' South & East of rd. # 1710 -  
600' to 800' South of inters. with rd.  
# 620 -

PLANE COORDINATE POSITION DATA

State \_\_\_\_\_ Zone \_\_\_\_\_  
X \_\_\_\_\_  
Y \_\_\_\_\_  
Estab. By \_\_\_\_\_  
*Agency*

*Signature* \_\_\_\_\_ Title PLS1028 Division \_\_\_\_\_ Headquarters \_\_\_\_\_ Date 12/12/84 7100-52 (3/68)

6

7

8

2

3

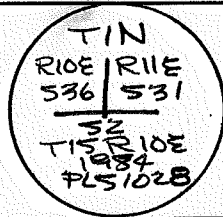
4

5

CORNER RECORD (PERPETUATION)

MONUMENT: DESCRIBE NEW MONUMENT SET, OR WORK DONE TO PRESERVE EXISTING MONUMENT

set 2" x 30" al. pipe with 3" al. cap stamped  
 set orange post with sign attached  
 warning against destroying.



ACCESSORIES : DESCRIBE NEW BT'S WITNESS OBJECTS ETC. ESTABLISHED, OR WORK DONE TO PRESERVE EXISTING EVIDENCE

BT's set:

12" D.F. - N. 46° E. - 26.3' scribed "TIN R11E 531 BT"  
 19" D.F. - N. 57° W. - 38.2' " " "TIN R10E 536 BT"

set BT + ATT signs + 6" red band on BT's - also set  
 brass disc stamped "151028" @ bottom of blaze -

Work Done By Dan Cron Title SURVEYOR Date 12/12/84 State Registration No. PLS1028  
 or Agency

Certified Cor. Record Prepared? Yes  No  Filed At: \_\_\_\_\_ Date \_\_\_\_\_

REMARKS

Index File No. 4

T.

R.

M.

Tract or Surv. No.

Cor.

12

13