

# LAND CORNER MONUMENT RECORD

INDEX FILE No. B1    USDA-FOREST SERVICE

LOCATION

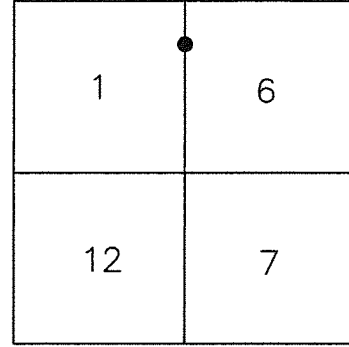
CC 1202

HOOD RIVER COUNTY  
STATE OF OREGON  
WILLAMETTE MERIDIAN

R. 9 E.

T.  
1  
N.

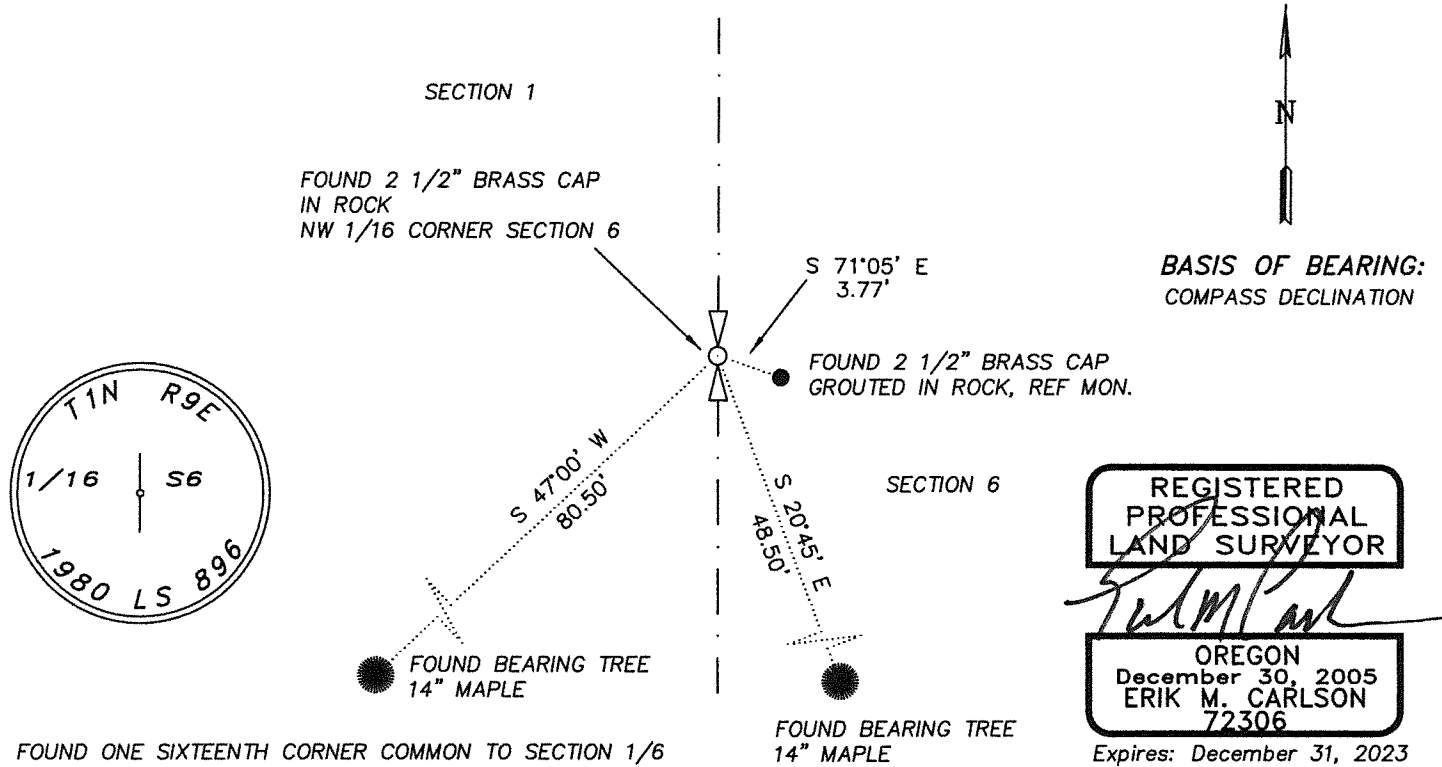
	6	5	4	3	2	1
	7	8	9	10	11	12
	18	17	16	15	14	13
	19	20	21	22	23	24
	30	29	28	27	26	25
	31	32	33	34	35	36



TOWNSHIP 1 NORTH                  RANGE 9 EAST                  SECTION 6 N 1/16 CORNER

TYPE OF MONUMENT; TIES TO BEARING TREES, OBJECTS, etc.

(SKETCH)



FOUND ONE SIXTEENTH CORNER COMMON TO SECTION 1/6  
FOUND A 2 1/2" BRASS CAP IN ROCK MOUND.

UPDATED CORNER NOTES:

From which

A 14" Maple (existing BT) bears South 47° West a distance of 80.5' feet from Corner. Existing BT was painted with red band. Existing blaze was painted red. Set washer and nail L.S. 72306.

A 14" D.Maple (existing BT) bears South 20° 45' East a distance of 48.5' feet from Corner. Existing BT was painted with red band. Existing blaze was painted red. Set washer and nail L.S. 72306.

A 2 1/2" Brass Cap (existing reference monument) grouted in rock, bears South 71°05' East a distance of 3.77' from Corner.

Refer to Field Book 2, Page 17. Date of Work 7/28/2020.

REGISTERED  
PROFESSIONAL  
LAND SURVEYOR

Erik M. Carlson

OREGON  
December 30, 2005  
ERIK M. CARLSON  
72306

Expires: December 31, 2023

**REMARKS: ( History of Corner, etc. )**

10/18/1976 - CORNER WAS ESTABLISHED FOR TIMBER CRUISING BY LARRY RECTOR AND JIM McCULLOUGH.

MARKED WITH 3"X3"X4' STAKE.

08/1980 - SET 2 1/2" X 30" GAL. STEEL PIPE WITH 2 1/2" BRASS CAP IN MOUND OF STONE BY BISHOP L.S. 896.

07/24/1991 - SET 2 1/2" BRASS CAP IN 4'X4' BOULDER AS A REFERENCE MONUMENT TO THE 1/16 CORNER BY C.E. WHITTEN L.S. 978.

DIRECTIONS TO CORNER: FROM INTERSECTION OF NF ROAD No. 2810 AND PUNCH BOWL ROAD TRAVEL WESTERLY ON 2810 APPROXIMATELY 7 MILES TO AN EVIDENT LOGGING CLEAR CUT LINE. CORNER IS APPROXIMATELY 600' NORTH OF ROAD. FOLLOW POSTED FOREST BOUNDARY SIGNS ALONG EAST SIDE OF CLEAR CUT UP STEEP TERRAIN TO CORNER.

NAME: ERIK M. CARLSON

DATE: DECEMBER 1, 2021

TITLE: TERRA SURVEYING

REGISTRATION NO. OR PLS 72306