

CC 1197

CORNER MAINTENANCE REPORT

PLC-3048

SECTION 22 & 23 TOWNSHIP 2 NORTH RANGE 7 EAST W.M. COUNTY MULTNOMAH AND HOOD RIVER DATE VISITED JUNE 26, 2013

CORNER DESIGNATION:

WITNESS CORNER 220' SOUTH OF SECTION CORNER COMMON TO SECTIONS 14, 15, 22, AND 23.

CORNER HISTORY:

THE HISTORY OF THIS CORNER WAS PREVIOUSLY DETAILED IN B.T. G-525 (CS 2005-111, HRCRSR).

PREVIOUS RENEWALS / SURVEYS, ETC.:

SN G15/7, SN 32949, CS 2005-111; FIELD NOTES OF MULTNOMAH COUNTY SURVEY CREW VISIT DATED 4/6/1992; B.T. BOOK-PAGE: C-348, E-252, G-525.

MONUMENT(S) & ACCESSORIES FOUND:

- (A) FOUND: 6" X 6" CONCRETE POST WITH 4-1/4" BRASS DISC, INSCRIBED AS SHOWN BELOW, UP 0.5' (SN 32949, RESET IN B.T. G-525). FOUND WHITE CARSONITE POST WITH STANDARD "SURVEY MARKER" DECAL SOUTH-SOUTHWESTERLY, 2'. FOUND 4" X 4" WHITE WOOD POST WITH YELLOW LOCATION TAG NORTHERLY, 2'.
(C) FOUND: 3/4" IRON PIPE WITH YPC INSCRIBED "MULT. CO.", DOWN 0.2' (B.T. E-252).
(D) FOUND: 3/4" IRON PIPE WITH YPC INSCRIBED "MULT. CO.", DOWN 0.3' (B.T. E-252).
(E) FOUND: 3/4" IRON PIPE WITH YPC INSCRIBED "MULT. CO. SURVEY", DOWN 0.2' (B.T. E-252).
(F) FOUND: 3/4" IRON PIPE WITH YPC INSCRIBED "MULT. CO. SURVEY", FLUSH (B.T. E-252).
(G) FOUND: 5' X 5' BOULDER, INSCRIBED WITH "CSBO" AND "+" ON FACE, LOCATED NEAR THE TOP OF A CUT BANK ON THE SOUTH SIDE OF THE RAILROAD TRACKS (B.T. C-348).

- (J) FOUND: RAILROAD SPIKE WITH PUNCH MARK (B.T. E-252), RECOVERED 0.7' IN 30" DIAMETER FIR, WITH VISIBLE AXE WORK (14" DIAMETER FIR PER B.T. E-252) FOUND MULTNOMAH COUNTY YELLOW LOCATION TAG ATTACHED TO TREE.

MONUMENT STATUS:

HELD MONUMENT POSITION, TIED AND SET REFERENCES AS NOTED.

NEW ACCESSORIES:

- (B) SET: 3/4" X 30" GALVANIZED IRON PIPE WITH YPC INSCRIBED "MULT. CO. SURVEY", FLUSH.
(H) SET: 3/4" X 30" GALVANIZED IRON PIPE WITH YPC INSCRIBED "MULT. CO. SURVEY", FLUSH.
(I) SET: 3/4" X 30" GALVANIZED IRON PIPE WITH YPC INSCRIBED "MULT. CO. SURVEY", FLUSH.

RRS = RAILROAD SPIKE
YPC = YELLOW PLASTIC CAP
SN = SURVEY NUMBER, MCSR
CS = COUNTY SURVEY NUMBER, HRCRSR
PLC = PUBLIC LAND CORNER NO., MCSR
B.T. = BEARING TREE, BOOK-PAGE, MCSR
MCSR = MULTNOMAH COUNTY SURVEY RECORDS
HRCRSR = HOOD RIVER COUNTY SURVEY RECORDS

BY: MULTNOMAH COUNTY SURVEYOR'S OFFICE
JAMES S. CLAYTON, COUNTY SURVEYOR
1600 S.E. 190TH AVE.
PORTLAND, OR 97233

CREW:

JUHNKE, MARCKHOFF, KAHSAY

FIELD BOOK:

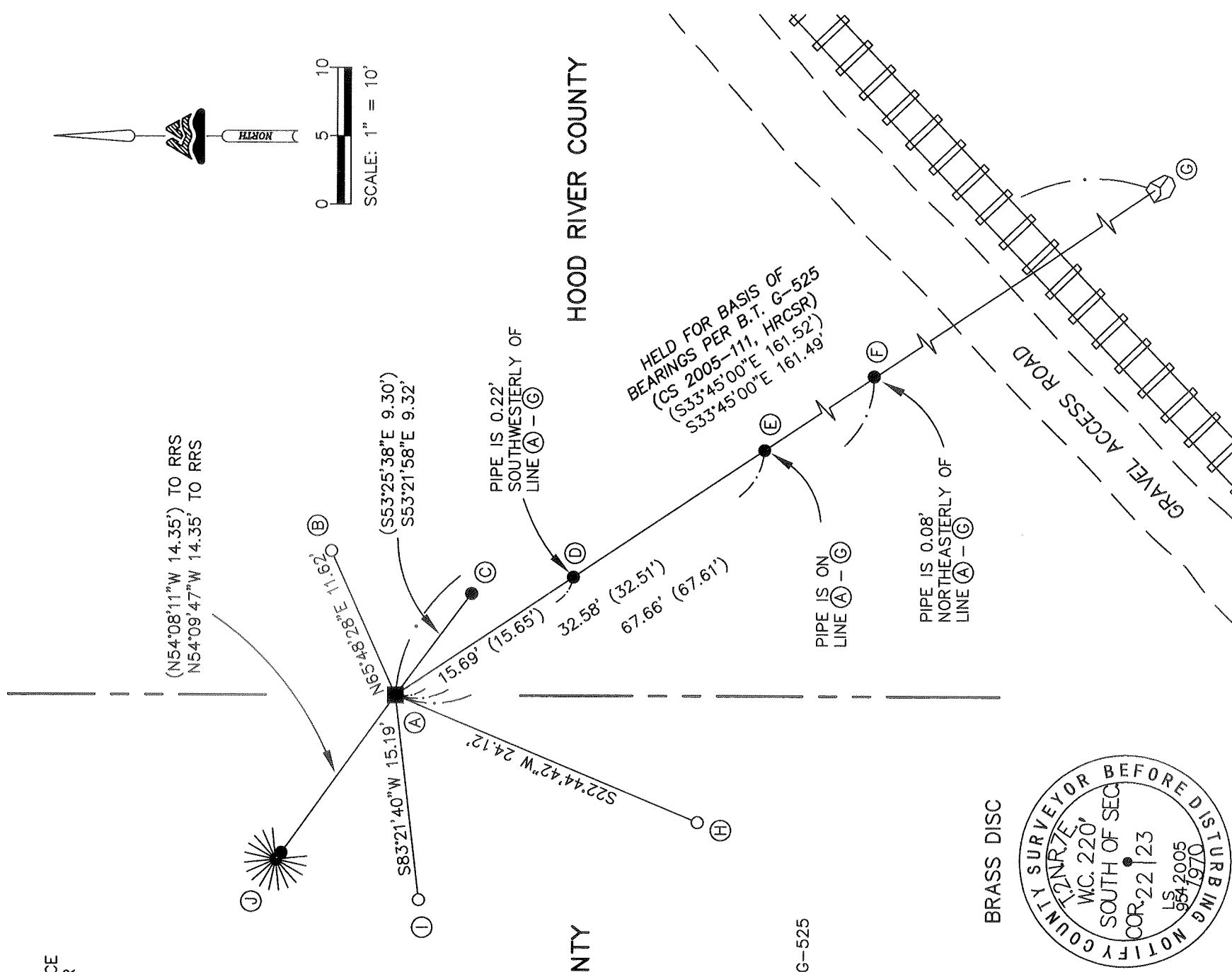
CORNER BOOK 49, PAGE 29

EQUIPMENT:

LEICA FLEXLINE TS06 TOTAL STATION,
TDS RANGER DATA COLLECTOR

DRAWING:

BOOK 46.DWG
BERGER



() = RECORD DATA PER B.T. G-525

REGISTERED PROFESSIONAL LAND SURVEYOR
JAMES S. CLAYTON
OREGON JUNE 30, 1997
COR. 22 | 23
LS 9542005
8541970
RENEWS: 1/1/2014

BRASS DISC
COUNTY SURVEYOR BEFORE DISTURBING
NOTIFY COUNTY SURVEYOR
WC. 220' SOUTH OF SECTION 22
COR. 22 | 23
LS 9542005
8541970

CS 2013 027

RECEIVED JUL -3 2013
CS 2013 027