

PC# 1196

CS 2013 025

HOOD RIVER COUNTY CORNER RESTORATION FORM

Section: 18 Township: 1 N Range: 10 E Date: Set May 13th 2013

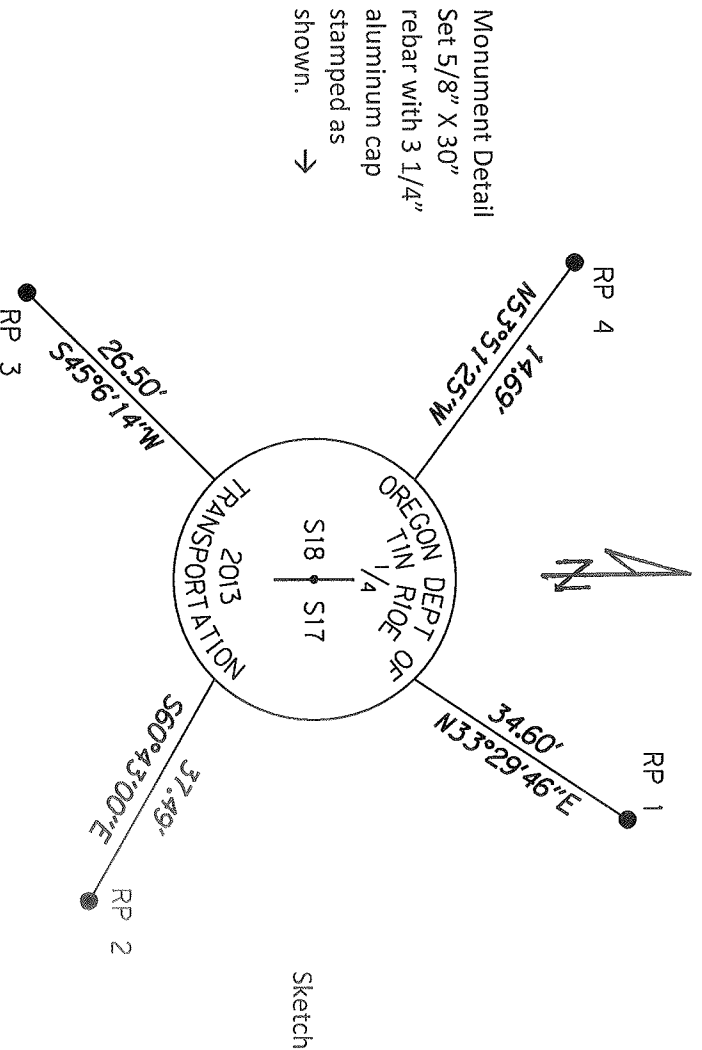
Corner Designation: East Quarter Corner Section 18

Condition Report Only
 Not Found
 Renewed
 Unrecorded
 Surveyed In
 Referenced Out

Previous Renewals/Surveys, etc: Co. Survey # 20 by John L. Henderson in Dec. 1908

Monument(s) & Accessories Found: (Condition and Source)

NOT TO SCALE



Monument Set (Procedures and Description) The E. 1/4 Corner of Sec. 18 was set by Distance-Distance intersect from the Center 1/4 Corner and the SE Corner of Section 18 using Distances from a 1970 Survey by Glenn D. Strait CS # 7350.

New Accessories:

- Set 5/8" X 30" rebar with 1 1/2" brass cap stamped "ODOT CONTROL RP1 2013".
- Set 5/8" X 30" rebar with 1 1/2" brass cap stamped "ODOT CONTROL RP2 2013".
- Set 5/8" X 30" rebar with 1 1/2" brass cap stamped "ODOT CONTROL RP2 2013".
- Set 5/8" X 18" rebar with 1 1/2" brass cap stamped "ODOT CONTROL RP4 2013".

Location & Comments:

Surveyor's Seal

Compass Declination Grid
 Bearings OGRS Gresham-Warm
 Springs Zone _____
 Firm/Agency ODOT
 Geometrics Unit _____

Address 4040 Fairview Ind. Dr. MS #4
Salem Or. 97302-1142
 Party Chief Bill Dye
 Notes _____
 Witness _____



OREGON
 MAY 12, 2010
 WILLIAM L. DYE
 46426
 RENEWAL DATE: 12-31-2013