

328

W.C. 1x. Found 1/2" G.I.P. with Brass cap set  
23 chains by U.S.E.D. 1934 for witness corner. O.K.  
South of Sec Cor. Referenced.

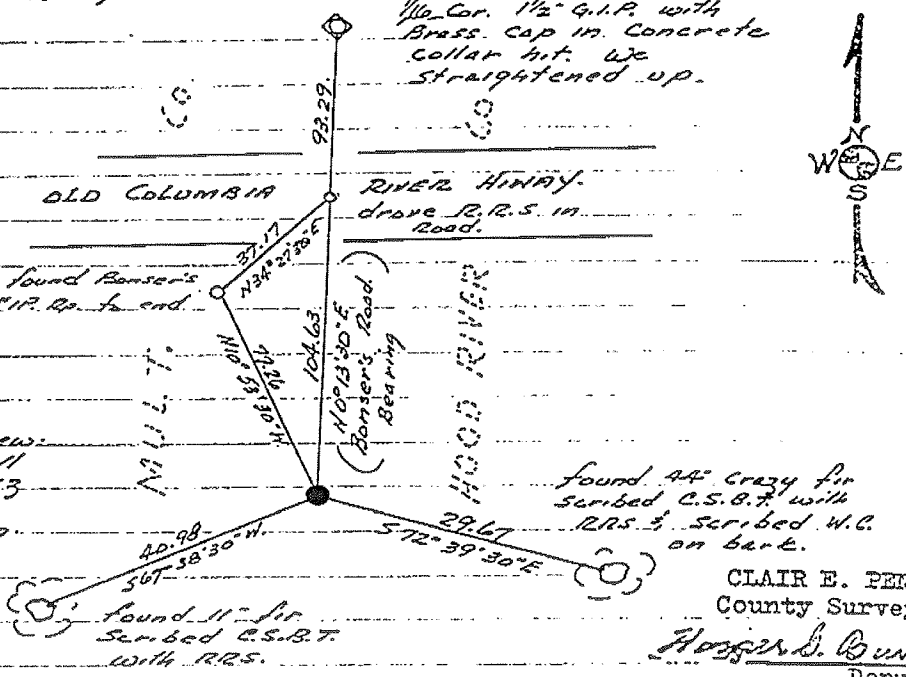
15/14  
22/23

2N., 7E.

C-249

Field Book 1964A B 48

Field Crew:  
Bursell  
Joersz  
Azer  
Kuehn



CLAIR E. PENSE  
County Surveyor

Harold B. Dunlap  
Deputy

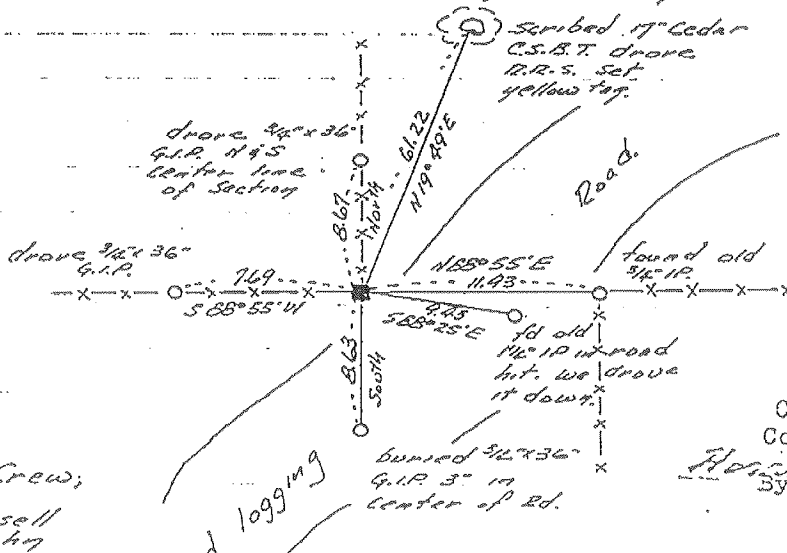
May 25, 1964

Center Found old 3/4" x 40" I.P. at old anchor post  
Section in E-W & N fence. No question with E-W & of  
22 sec. We ran N-S & see our survey No.  
15, 3E checked this I.P. O.K.

Replaced I.P. with 42" Con Man. Buried 4/5<sup>th</sup>  
old Quaker bottle on west side.

Stamped, R.P.'s & set yellow tag.

Field Book 1964A B 49



CLAIR E. PENSE  
County Surveyor

Harold B. Dunlap  
Deputy

Field Crew;  
Bursell  
Kuehn

## Randy Johnston

---

**From:** Brian HENSON [brian.henson@multco.us]  
**Sent:** Monday, May 20, 2013 4:11 PM  
**To:** Randy Johnston  
**Subject:** PLC-3049  
**Attachments:** BT-D-328.pdf

Randy,

Multnomah County is abandoning this corner. The corner is in a slide area and is a second WC to the corner common to 14, 15, 22, and 23. See last BT.

Thanks

--

**Brian Henson, PLS, CWRE**  
**Survey Supervisor**  
**Multnomah County Surveyor's Office**  
1600 SE 190th Ave.  
Portland, OR 97233-5910  
Phone:(503)988-5050 ext 28169  
Fax:(503)988-3389  
[brian.henson@multco.us](mailto:brian.henson@multco.us)