

HOOD RIVER COUNTY RESTORATION FORM

Section: 5 Township: 1S Range: 9E DATE: 3/5/2012

CORNER DESIGNATION

NORTHWEST CORNER  
LOT 5 OF SECTION 5

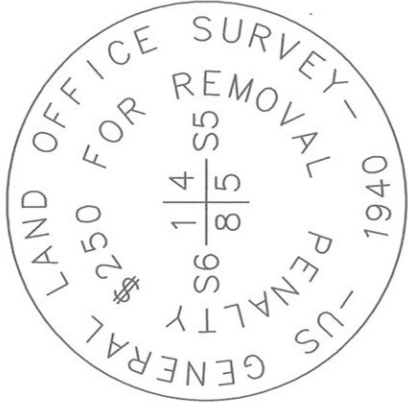
---	Condition Report Only
---	Not Found
---	Renewed
---	Unrecorded
---	Surveyed In
-X-	Referenced Out

Previous Renewals/Surveys, etc. IN MAY OF 1940 PUBLIC LAND SURVEYOR LEONARD CARTER UNDER GROUP #194 COMMENCED A SURVEY OF THE SOUTH AND WEST BOUNDARIES AND A PORTION OF THE SUBDIVISIONAL LINES COMPLETING THE TOWNSHIP 1 SOUTH RANGE 9 EAST

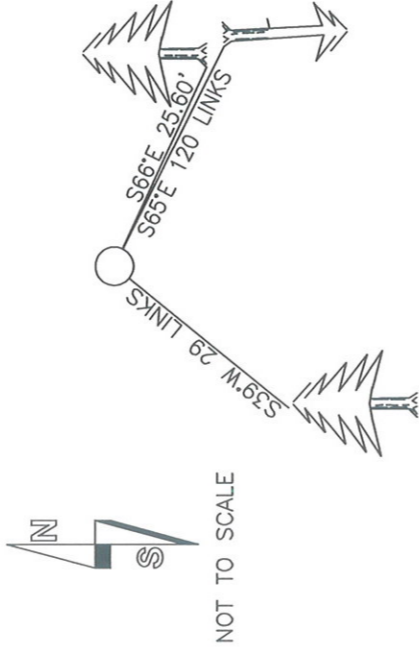
Monument(s) & Accessories Found: (Condition and Source)

FOUND AND HELD 2.5" GLO BRASS CAP STAMPED AS SHOWN IN A ROCK MOUND 2' X 2' X 1.5' AS DESCRIBED IN THE GLO FIELD NOTES. EXISTING REFERENCES:  
(OBT) WIND TOSSED FIR WITH HEALED FACE S 65° E 120 LINKS, ADDED A 54-3 TAG WITH RECORD INFORMATION  
(OBT) 37" FIR WITH HEALED FACE S 39° W 29 LINKS, ADDED A 54-3 TAG WITH RECORD INFORMATION

Monument Detail



Sketch



Monument Set (Procedures and Description)

NO NEW MONUMENT SET

New Accessories

NEW REFERENCE:  
13" HEMLOCK SCRIBED "5 S5 RP" S 66° E 25.60' SIDE CENTER

Location & Comments

ABOUT 2000 FEET NORTH OF NF RD 1600 AT LINE CROSSING AND ON THE SOUTH EDGE OF POWER TRANSMISSIONS RIGHT OF WAY

Compass Declination 18' EAST

Firm/Agency LONGVIEW TIMBER CORP.

Address 10 INTERNATIONAL WAY  
LONGVIEW, WA 98632

Party Chief JASON L SIMES

Notes JASON L SIMES

Witness ED BROWN

Surveyors Seal

REGISTERED  
PROFESSIONAL  
LAND SURVEYOR

*Jason L. Simes* 3-7-2012

OREGON  
NOVEMBER 10, 2009  
JASON L. SIMES  
83256PLS

Expires 6-30-2012