

HOOD RIVER COUNTY RESTORATION FORM

Section: 5 Township: 1S Range: 9E

DATE: 3/5/2012

CORNER DESIGNATION

SOUTHWEST SECTION CORNER

---	Condition Report Only
---	Not Found
---	Renewed
---	Unrecorded
---	Surveyed In
-X-	Referenced Out

Previous Renewals/Surveys, etc. IN MAY OF 1940 PUBLIC LAND SURVEYOR LEONARD CARTER UNDER GROUP #194 COMMENCED A SURVEY OF THE SOUTH AND WEST BOUNDARIES AND A PORTION OF THE SUBDIVISIONAL LINES COMPLETING THE TOWNSHIP 1 SOUTH RANGE 9 EAST

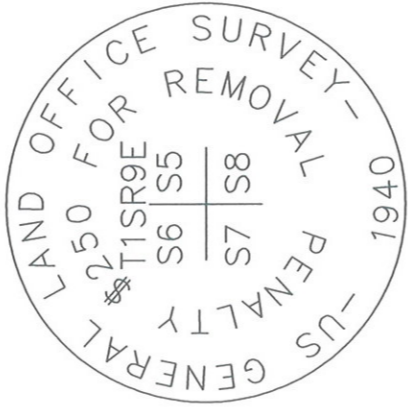
Monument(s) & Accessories Found: (Condition and Source)

FOUND AND HELD 2.5" GLO BRASS CAP STAMPED AS SHOWN EXPOSED 0.4' WITH A MOUND OF STONE 4' X 4' X 3.5' APPROXIMATELY 5' WEST OF CORNER AS DESCRIBED IN THE GLO FIELD NOTES.

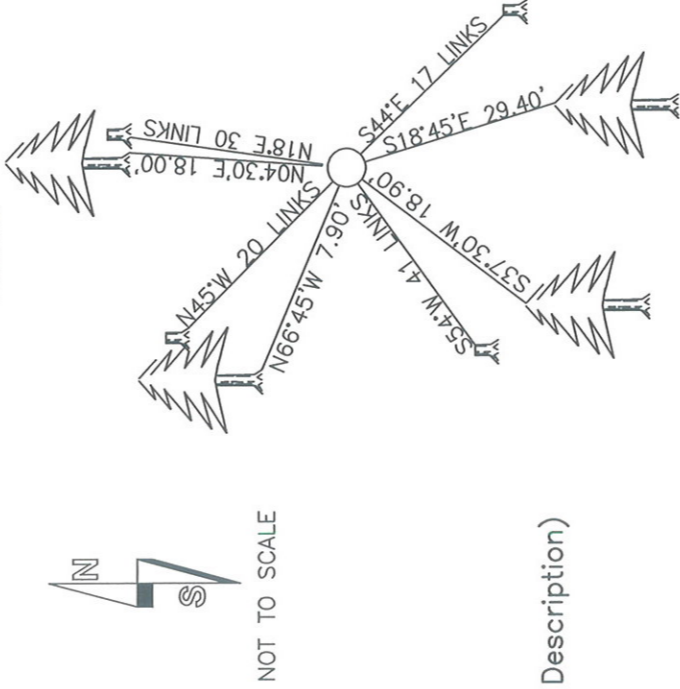
EXISTING REFERENCES:

- (OBT) 5' TALL FIR STUMP WITH HEALED FACE N 18° E 30 LINKS, ADDED 54-3 TAG WITH RECORD INFORMATION
- (OBT) 5' TALL FIR STUMP WITH HEALED FACE S 44 E 17 LINKS, ADDED 54-3 TAG WITH RECORD INFORMATION
- (OBT) 5' TALL FIR STUMP WITH VISIBLE SCRIBING S 54° W 41 LINKS, ADDED 54-3 TAG WITH RECORD INFORMATION
- (OBT) 5' TALL NOBLE FIR STUMP WITH HEALED FACE N 45° W 20 LINKS, ADDED 54-3 TAG WITH RECORD INFORMATION

Monument Detail



Sketch



Monument Set (Procedures and Description)

NO NEW MONUMENT SET

New Accessories

NEW ACCESSORIES WERE TIED FROM CONTROL TRAVERSE AND BEARING ARE REPORTED TO THE NEAREST DEGREE DISTANCES WERE MEASURED TO A SPIKE AT SIDE CENTER WITH A STEEL BUCKERS TAPE

NEW REFERENCES:

- 12" FIR SCRIBED "T1S R9E S5 RP" N 04°30' E 18.00' SIDE CENTER
- 12" PACIFIC SILVER FIR SCRIBED "T1S R9E S8 RP" S 18°45' E 29.40' SIDE CENTER
- 14" FIR SCRIBED "T1S R9E S7 RP" S 37°30' W 18.90' SIDE CENTER
- 9" FIR SCRIBED "T1S R9E S6 RP" N 66°45' W 7.90' SIDE CENTER

Location & Comments

ABOUT A HALF MILE SOUTH WESTERLY FROM NF RD 1600 JUNCTION WITH THE 1600670 ROAD AND APPROXIMATELY 300 FEET SOUTH OF NF RD 1600670 AT LINE CROSSING

Compass Declination 18° EAST

Firm/Agency LONGVIEW TIMBER CORP.

Address 10 INTERNATIONAL WAY LONGVIEW, WA 98632

Party Chief JASON L SIMES

Notes JASON L SIMES

Witness ED BROWN

Surveyors Seal

REGISTERED PROFESSIONAL LAND SURVEYOR

Signature: Jason L. Simes, Date: 3-7-2012

OREGON NOVEMBER 10, 2009 JASON L. SIMES 83256PLS

Expires 6-30-2012