

SECTION OR SUBDIVISION

N 1/16 24 # 19

CORNER No.

114B

TWP.

1 N

RANGE

RANGE 10 EAST

RANGE 11 EAST

W.M.

E

CORNER DESCRIPTION

8/91

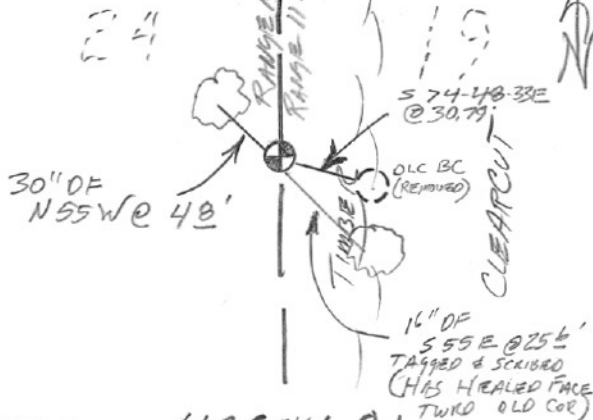
SET: 5/8" IR/PC AT

SINGLE PROPORTION

BASED ON NEWLY FOUND

1/4 COR TO SOUTH; REMOVED

PLS 102B IP/BC



W.O. REF.

HRCBK1-91

DWG # 91057

CARD

1

OF

1