

SECTION OR SUBDIVISION Sect. 6

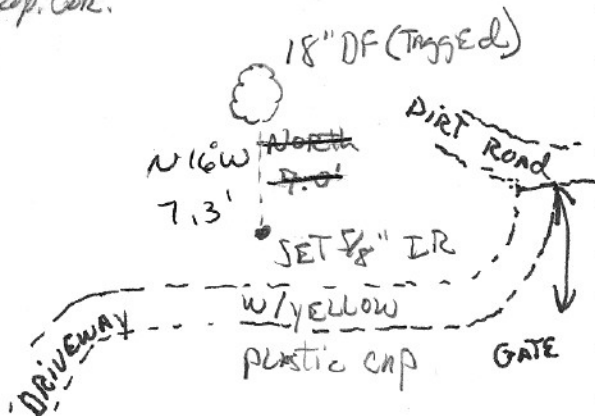
CORNER No. 1110

TWP. 1N, RANGE 11E, W.M.

CORNER DESCRIPTION

Prop. Cor.

↑
N



COR. IS A 5/8" IR W/
 YELLOW PLASTIC CAP
 FROM WHICH A TAGGED
 18" DF. REARS NORTH
 7.0'. DRIVEWAY IS
 SOUTH APPROX 10 FT.

Moved cor 1.56'
 East. 7/20/95

W.O. REF.

Job File "Elaine" Pt. #34

CARD BK 2/88 Pg. 11 OF