

LAND CORNER MONUMENT RECORD

INDEX FILE No. Z7 USDA-FOREST SERVICE

LOCATION

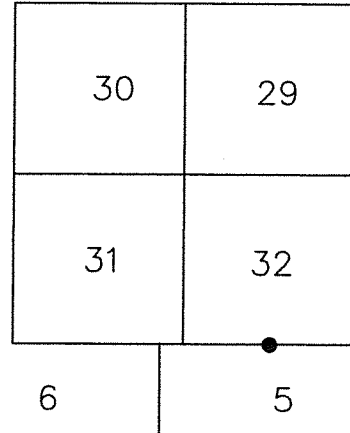
CC 1067

HOOD RIVER COUNTY
STATE OF OREGON
WILLAMETTE MERIDIAN

R. 9 E.

T.
2
N.

	6	5	4	3	2	1
	7	8	9	10	11	12
	18	17	16	15	14	13
	19	20	21	22	23	24
	30	29	28	27	26	25
	31	32	33	34	35	36
	6	5				

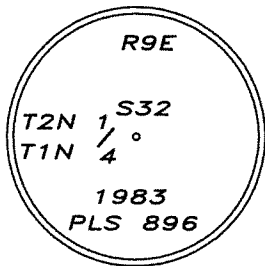


TOWNSHIP 2 NORTH

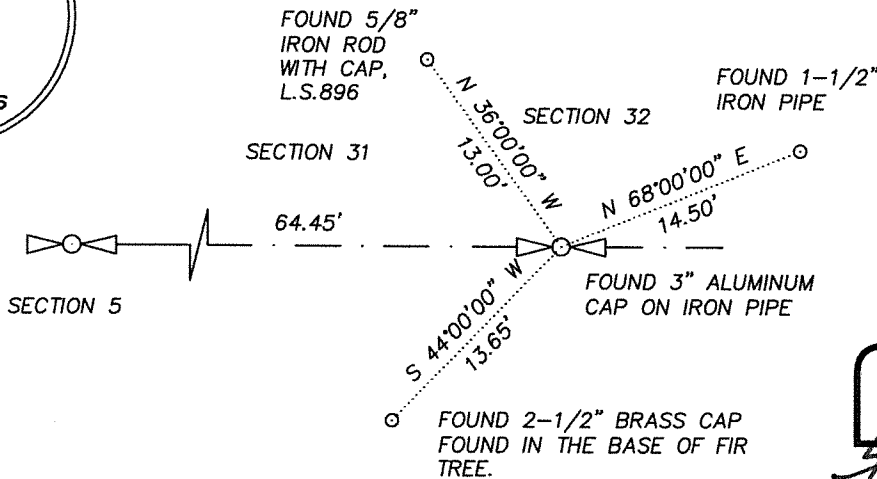
RANGE 9 EAST

SOUTH QUARTER CORNER SECTION 32

TYPE OF MONUMENT; TIES TO BEARING TREES, OBJECTS, etc.



BASIS OF BEARING:
COMPASS DECLINATION



FOUND SOUTH QUARTER CORNER, SECTION 32

FOUND A 3" ALUMNUM CAP

UPDATED CORNER NOTES: CC#1067

From which

A 5/8" Iron Rod, L.S.896, corner bears SOUTH 36° WEST a distance of 13.0 feet

A 1-1/2" Iron Pipe, corner bears NORTH 68° EAST a distance of 14.5 feet

A 2-1/2" Brass Cap, corner bears SOUTH 44° WEST a distance of 13.65 feet

REGISTERED
PROFESSIONAL
LAND SURVEYOR

OREGON
December 30, 2005
ERIK M. CARLSON
72306

Expires: December 31, 2023

REMARKS: (History of Corner, etc.)

11/1983 - CORNER WAS RE ESTABLISHED AFTER FIRE BY BISHOP L.S.896 (C.S.83078, CORNER CARD #1067)
5/8" IRON ROD, L.S.896 N32°W-12.9'
1-1/2" IRON PIPE, N71°E-14.3'

6/2020 - CORNER WAS VISITED AND TIED, ASSESSORIES MATCH THE RECORD

DIRECTIONS TO CORNER: FROM INTERSECTION OF NF ROAD No. 2810 AND PUNCH BOWL ROAD TRAVEL WESTERLY ON 2810 APPROXIMATELY 7 MILES TO AN EVIDENT LOGGING CLEAR CUT LINE. CORNER IS APPROXIMATELY 600' NORTH OF ROAD, HEAD WEST ALONG NORTH SIDE OF CLEAR CUT TO A OLD OVERGROWN LOGGING ROAD HEADING NORTHWESTERLY, CORNER IS APPROXIMATELY 100 FEET EASTERLY, FOLLOW LINE POSTS EAST.

GRID COORDINATES; ORGN; OREGON NORTH ZONE 3601, NAD 83(2011) EPOCH 2010.00

NORTHING	EASTING
709801.56	7889810.90

NAME: ERIK M. CARLSON

DATE: DECEMBER 1, 2021

TITLE: TERRA SURVEYING

REGISTRATION NO. OR PLS 72306

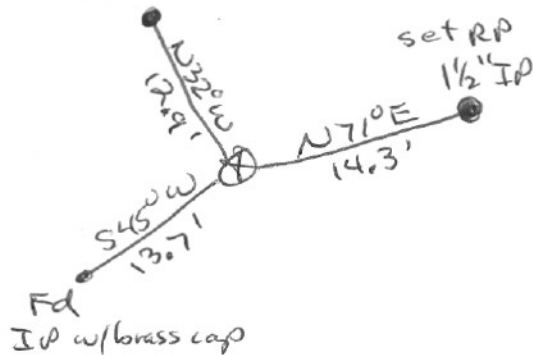
SECTION OR SUBDIVISION S $\frac{1}{4}$ cor sec 32

CORNER No. 1067

TWP. 2N, RANGE 9E, W.M.

CORNER DESCRIPTION

set RP
5/8" IR w/ plastic cap



Alum pipe &
cap set in 1983
by Larry Bishop
by single prep.

W.O. REF. _____

Dwg # 83028

CARD _____ OF _____