

SECTION OR SUBDIVISION

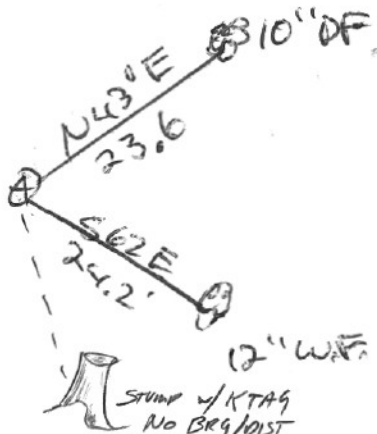
1/4 COR  $\frac{21}{28}$

CORNER No. ....

1041

TWP. .... 15 ....., RANGE. 10 E ....., W.M.

CORNER DESCRIPTION



W.O. REF. \_\_\_\_\_

2 1/2" IP

w/ brass cap  
set by Bishop  
1979

see CS# 79104

7/9/01 = VISITED BY HAC FOREMAN; FOUND  
AS NOTED

CARD ..... OF .....