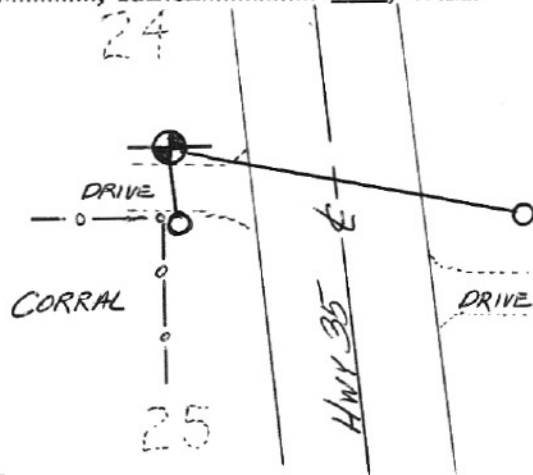


SECTION OR SUBDIVISION $\frac{1}{4}$ COR $\frac{24}{25}$

CORNER No. 1003

TWP. 2N, RANGE 10E, W.M.

CORNER DESCRIPTION



8-9-89

FOUND IR/LEAD CAP 8"

DEEP @ N-EDGE GRAVEL

DRIVE, 100'± W of E of HWY 35.

P. POLE "020052-16" BEARS

S 24° E, 243', w/ NEW TAG

P. POLE "020052-16-16" BEARS

S 87° E, 180', w/ OLD

STATE FORESTRY TAG-NO DATE

W.O. REF. _____

CARD 1 OF # 2

SECTION OR SUBDIVISION

 $\frac{1}{4}$ cor $\frac{24}{25}$

CORNER No.

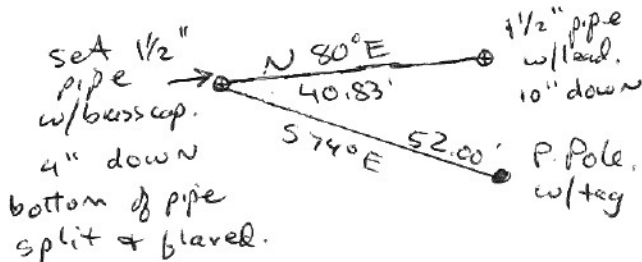
1003

TWP. 2N, RANGE 10E, W.M.

CORNER DESCRIPTION

Set $1\frac{1}{2}$ " IP w/ brass
cap. in same location
as found (best) $1\frac{1}{2}$ " IP.
Another $1\frac{1}{2}$ " pipe w/ lead cap
bd. N 80° E 40.83'

April 2003



W.O. REF.

CARD

2

OF

2

OVER \rightarrow

Cor#1003 ¼ cor 24/25 2N10E

This corner currently used is a 1 ½" ip w/lead cap. I can find no record of who set it. JLH said the corner was an iron pin with one orig bt (1909). PMM said the corner was a ½" gas pipe with one orig bt (1912). Comparing recent measurements with JLH and PMM measurements to the sec cors to the east and west indicate it should move west about 35-40 feet. Moving this corner to the west would make the center quarter and the center-south 1/16 corner of sec 25 fit the centerline of Neal Creek road much closer than the existing monuments do. The existing monuments were set around 1960 by either Frey or Perkins. NOTE: I found a 1 ½" pipe 40.7' west of the currently accepted pipe on March 14, 2003. One of the old county corner record books (1940's) shows a 1 ½" pipe and one orig bt. The bt has since been cut down and a lawn planted, so there is no sign of the tree. I also found PMM's 1/16 corner east of this corner, a 2" pipe (PMM bk6 pp24-28), and a ½" gas pipe, also set by PMM, 660 feet east of his 1/16 cor. Both of these corners fit the newly found ¼ cor very closely. We searched for the JLH stones (C1/4 and CS 1/16 cor) south of this ¼ corner on the centerline of Neal Creek road. We found nothing at the center section, and found a stone the correct size and location at the CS1/16 corner, but there were no markings on the stone. Henderson ran the N/S centerline of sec 25 in 1909 and measured the distance to be 5298.48'. We remeasured this distance and found it to be 5299.89'. Based on all this recently discovered evidence, HRC will remonument the found 11/2" pipe with a new monument.